

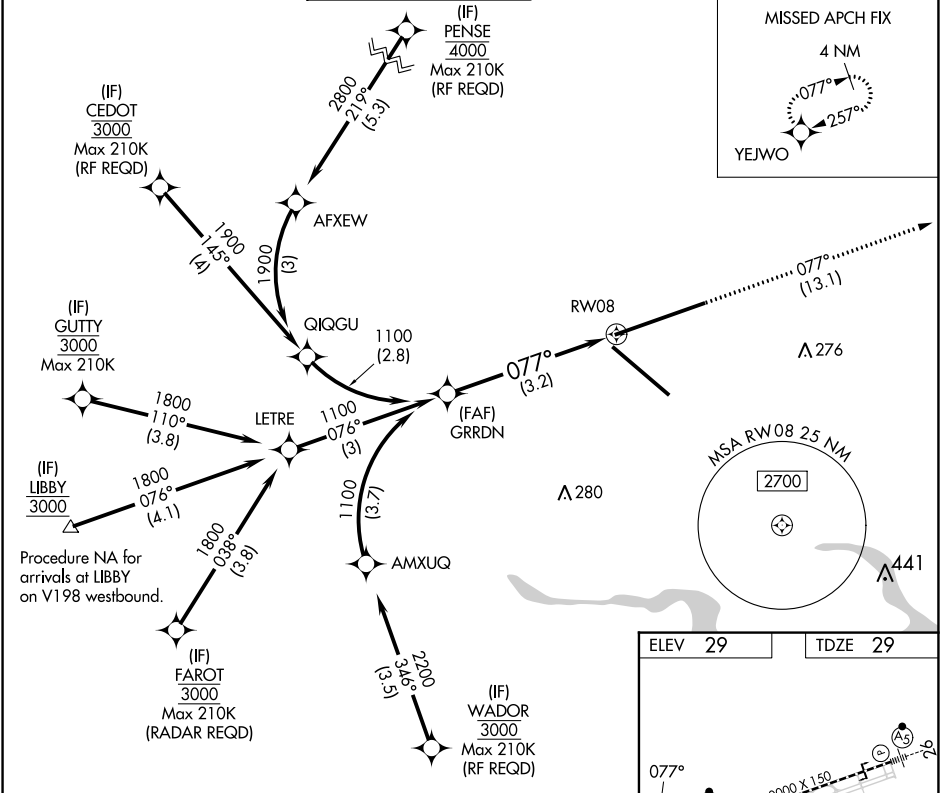
APP CRS	Rwy Idg	10000
077°	TDZE	29
	Apt Elev	29

RNAV (RNP) Y RWY 8

JACKSONVILLE INTL (JAX)

<p>▼ For uncompensated Baro-VNAV systems, procedure MALS below -5°C (23°F) or above 54°C (130°F). GPS required. For inop MALSR, increase RNP 0.11 all Cats visibility to 1 mile, increase RNP 0.30 all Cats visibility to 1½ mile.</p>	<p>ALSIF-2</p>	<p>MISSED APPROACH: Climb to 2000 on track 077° to YEJWO and hold.</p>
	<p>ALSIF-2</p>	

D-ATIS	JACKSONVILLE APP CON	JACKSONVILLE TOWER	GND CON	CLNC DEL	CPDLC
125.85	119.0 269.9	118.3 317.7	121.9 348.6	119.5 290.275	



VGSI and RNAV glidepath not coincident (VGSI Angle 3.00/TCH 70).

1100
GP 3.00° TCH 51

1100
GRRDN

077°

2000
tr 077°

YEJWO

3.2 NM

See planview for multiple IF locations.

CATEGORY	A	B	C	D
RNP 0.11 DA		356/40	327 (400-¾)	
RNP 0.30 DA		426/45	397 (400-¾)	

ELEV 29	TDZE 29
---------	---------

REIL Rwy 32
TDZ/CL Rwys 8, 14, and 26
HIRL Rwys 8-26 and 14-32

AUTHORIZATION REQUIRED

SE-3, 28 NOV 2024 to 26 DEC 2024

SE-3, 28 NOV 2024 to 26 DEC 2024