

ALEXANDRIA THREE DEPARTURE  
(AEX3.AEX) 070CT121

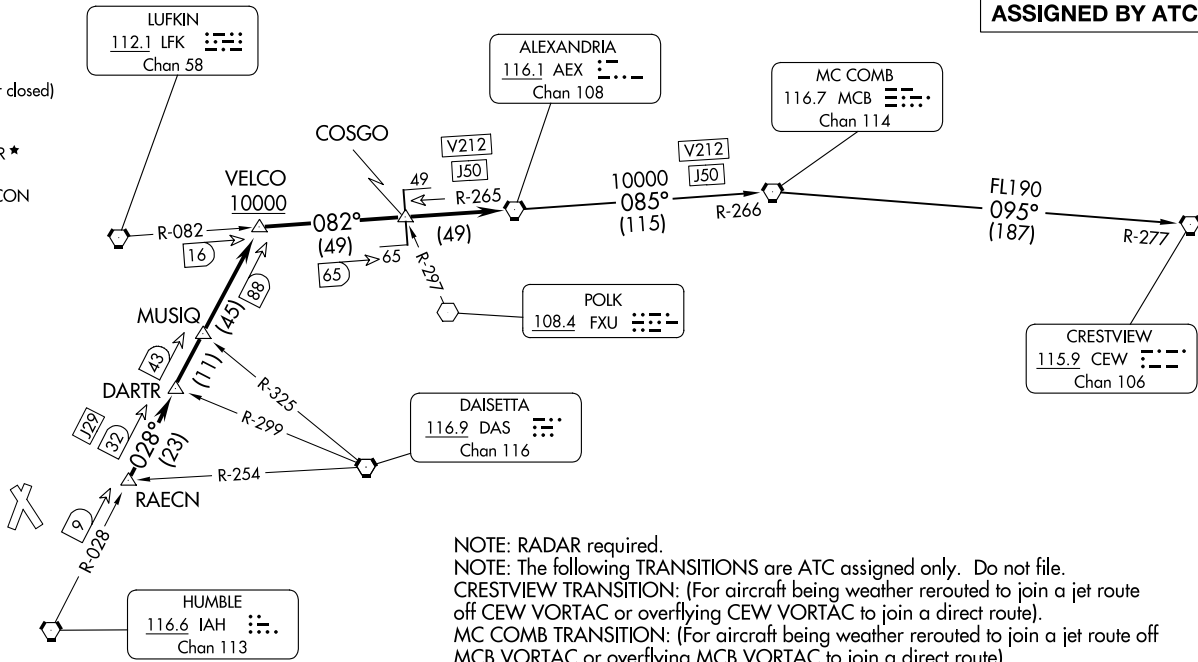
ALEXANDRIA THREE DEPARTURE  
(AEX3.AEX) 24137

AL-5573 (FAA)

CONROE/NORTH HOUSTON RGNL (CXO)  
HOUSTON, TEXAS

TOP ALTITUDE:  
ASSIGNED BY ATC

ATIS  
118.325  
CLNC DEL  
120.45  
CLNC DEL  
119.55 (when twr closed)  
GND CON  
120.45  
CONROE TOWER \*  
124.125 (CTAF)  
HOUSTON DEP CON  
119.7 281.4



TAKEOFF MINIMUMS  
Rwys 1, 14, 19, 32: Standard.

NOTE: RADAR required.  
NOTE: The following TRANSITIONS are ATC assigned only. Do not file.  
CRESTVIEW TRANSITION: (For aircraft being weather rerouted to join a jet route off CEW VORTAC or overflying CEW VORTAC to join a direct route).  
MC COMB TRANSITION: (For aircraft being weather rerouted to join a jet route off MCB VORTAC or overflying MCB VORTAC to join a direct route).

(CONTINUED ON FOLLOWING PAGE)

NOTE: Chart not to scale.

HOUSTON, TEXAS  
CONROE/NORTH HOUSTON RGNL (CXO)

# ALEXANDRIA THREE DEPARTURE



## DEPARTURE ROUTE DESCRIPTION

**TAKEOFF ALL RUNWAYS:** When entering controlled airspace, climb on assigned heading for RADAR vectors to RAECN INT. Maintain ATC assigned altitude. Expect filed altitude 10 minutes after departure, thence. . . .

. . . .on IAH R-028 to VELCO INT, cross VELCO INT at or above 10000, then right turn on LFK R-082 and AEX R-265 to AEX VORTAC.

CRESTVIEW TRANSITION (AEX3.CEW): From over AEX VORTAC on AEX R-085 and MCB R-266 to MCB VORTAC, then on MCB R-095 and CEW R-277 to CEW VORTAC.

MC COMB TRANSITION (AEX3.MCB): From over AEX VORTAC on AEX R-085 and MCB R-266 to MCB VORTAC.

SC-5, 28 NOV 2024 to 26 DEC 2024

SC-5, 28 NOV 2024 to 26 DEC 2024