

INDUSTRY ONE DEPARTURE  
(IDU1, IDU) 070CT21

INDUSTRY ONE DEPARTURE  
(IDU1, IDU) 24137

AL-5373 (FAA)

CONROE/NORTH HOUSTON RGNL (CXO)  
HOUSTON, TEXAS

ATIS  
118.325  
CLNC DEL  
120.45  
CLNC DEL  
119.55 (when twr closed)  
GND CON  
120.45  
CONROE TOWER★  
124.125 (CTAF)  
HOUSTON DEP CON  
119.7 281.4

**TOP ALTITUDE:  
ASSIGNED BY ATC**



HUMBLE  
116.6 IAH  
Chan 113

NAVASOTA  
115.9 TNV  
Chan 106

CENTEX  
112.8 CWK  
Chan 75

JUNCTION  
116.0 JCT  
Chan 107

STONEWALL  
113.8 STV  
Chan 85

SAN ANTONIO  
116.8 SAT  
Chan 115

INDUSTRY  
110.2 IDU  
Chan 39

CORPUS CHRISTI  
115.5 CRP  
Chan 102

LAREDO  
117.4 LRD  
Chan 121

**TAKEOFF MINIMUMS**

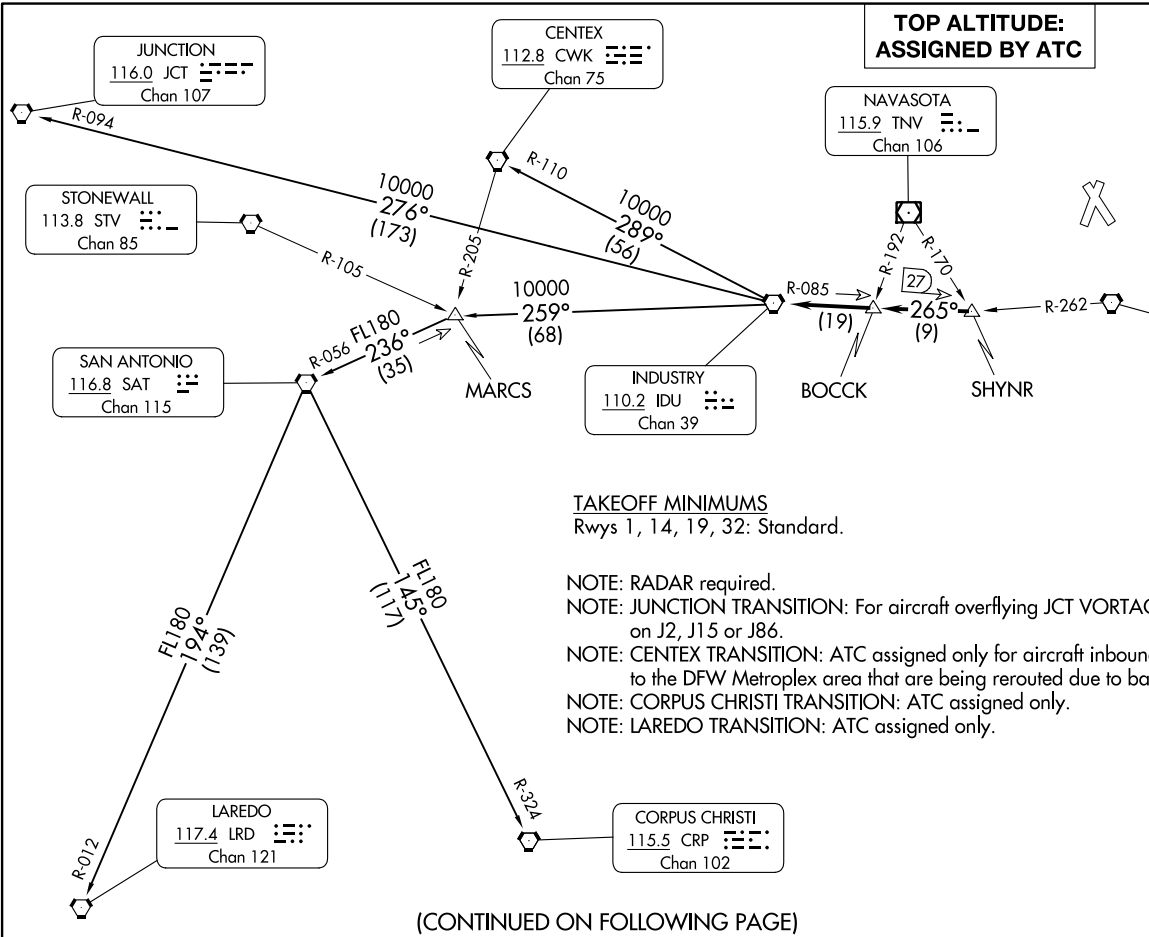
Rwys 1, 14, 19, 32: Standard.

- NOTE: RADAR required.
- NOTE: JUNCTION TRANSITION: For aircraft overflying JCT VORTAC on J2, J15 or J86.
- NOTE: CENTEX TRANSITION: ATC assigned only for aircraft inbound to the DFW Metroplex area that are being rerouted due to bad weather.
- NOTE: CORPUS CHRISTI TRANSITION: ATC assigned only.
- NOTE: LAREDO TRANSITION: ATC assigned only.

(CONTINUED ON FOLLOWING PAGE)

NOTE: Chart not to scale.

HOUSTON, TEXAS  
CONROE/NORTH HOUSTON RGNL (CXO)



# INDUSTRY ONE DEPARTURE



## DEPARTURE ROUTE DESCRIPTION

TAKEOFF ALL RUNWAYS: When entering controlled airspace, climb on assigned heading for RADAR vectors to SHYNR INT. Maintain ATC assigned altitude. Expect filed altitude 10 minutes after departure, thence . . . .

. . . . on IDU R-085 to BOCCK INT, then on IDU R-085 to IDU VORTAC.

CENTEX TRANSITION (IDU1.CWK): From over IDU VORTAC on IDU R-289 and CWK R-110 to CWK VORTAC.

CORPUS CHRISTI TRANSITION (IDU1.CRP): From over IDU VORTAC on IDU R-259 to MARCS INT, then on SAT R-056 to SAT VORTAC, then on SAT R-145 and CRP R-324 to CRP VORTAC.

JUNCTION TRANSITION (IDU1.JCT): From over IDU VORTAC on IDU R-276 and JCT R-094 to JCT VORTAC.

LAREDO TRANSITION (IDU1.LRD): From over IDU VORTAC on IDU R-259 to MARCS INT, then on SAT R-056 to SAT VORTAC, then on SAT R-194 and LRD R-012 to LRD VORTAC.

SC-5, 28 NOV 2024 to 26 DEC 2024

SC-5, 28 NOV 2024 to 26 DEC 2024