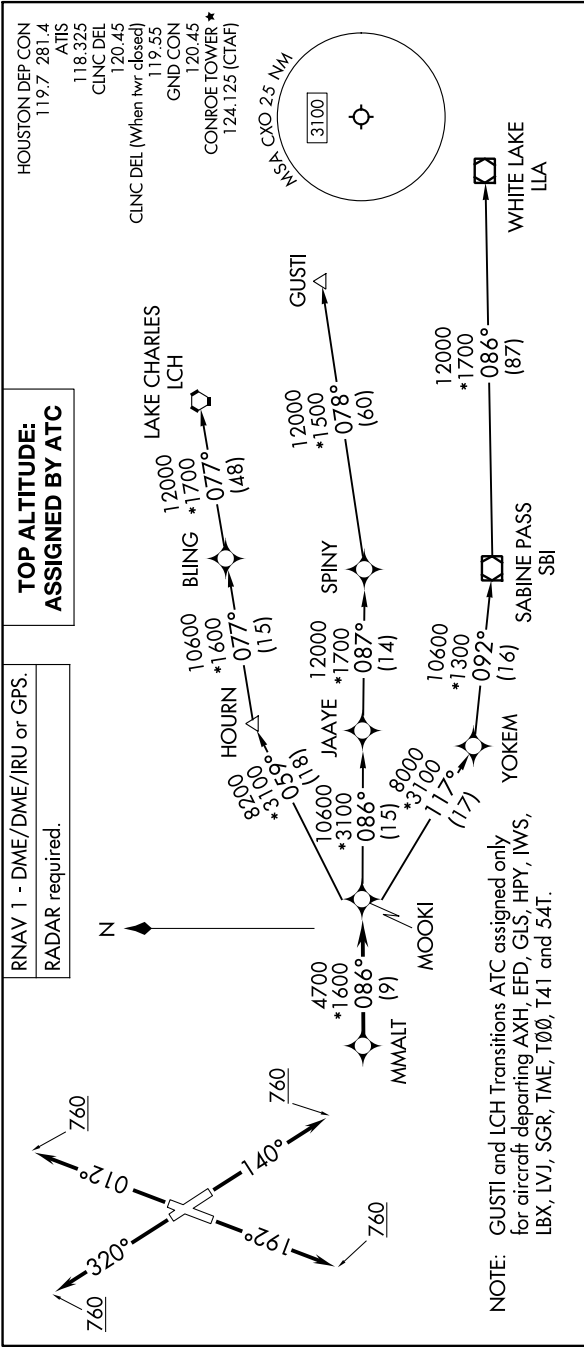


MMALT SEVEN DEPARTURE (RNAV)

HOUSTON, TEXAS

SC-5, 28 NOV 2024 to 26 DEC 2024



HOUSTON DEP CON
119.7 281.4
ATIS
118.325
CINC DEL
120.45
CINC DEL (When twr closed)
119.55
GND CON
120.45
CONROE TOWER *
124.125 (CTAF)

**TOP ALTITUDE:
ASSIGNED BY ATC**

RNAV 1 - DME/DME/IRU or GPS.
RADAR required.

DEPARTURE ROUTE DESCRIPTION

TAKEOFF RUNWAY 1: Climb on heading 012° to 760, for RADAR vectors to MMALT, thence. . . .
TAKEOFF RUNWAY 14: Climb on heading 140° to 760, for RADAR vectors to MMALT, thence. . . .
TAKEOFF RUNWAY 19: Climb on heading 192° to 760, for RADAR vectors to MMALT, thence. . . .
TAKEOFF RUNWAY 32: Climb on heading 320° to 760, for RADAR vectors to MMALT, thence. . . .
 . . . on track 086° to MOOKI, then on (transition). Maintain ATC assigned altitude.
 Expect filed altitude 10 minutes after departure.

TAKEOFF MINIMUMS
 Rws 1, 14, 19, 32: Standard with
 minimum climb of 500'/NM to 760.

GUSTI TRANSITION (MMALT7.GUSTI)
LAKE CHARLES TRANSITION (MMALT7.LCH)
WHITE LAKE TRANSITION (MMALT7.LLA)

NOTE: Chart not to scale.

MMALT SEVEN DEPARTURE (RNAV)

(MMALT7.MMALT) 30NOV23

HOUSTON, TEXAS

CONROE/NORTH HOUSTON RGNL (CXXO)

SC-5, 28 NOV 2024 to 26 DEC 2024