

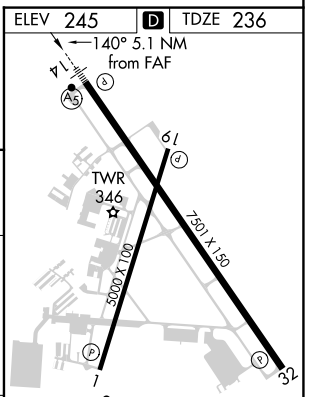
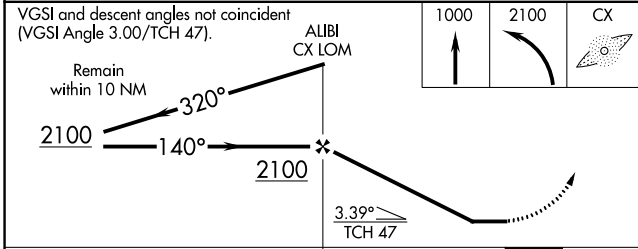
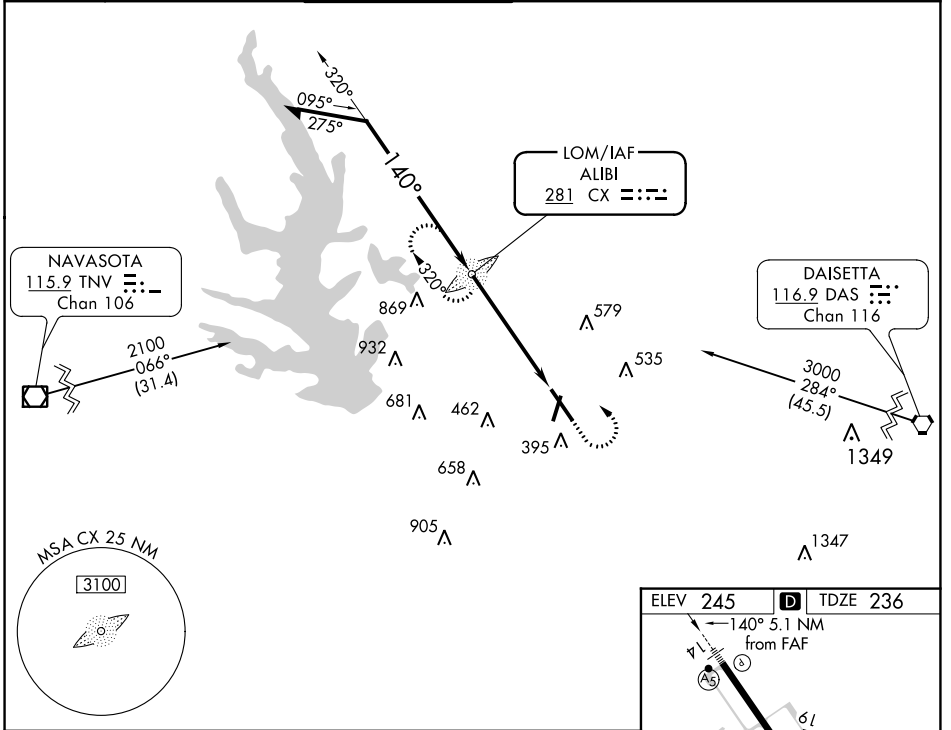
LOM CX <b>281</b>	APP CRS <b>140°</b>	Rwy Idg TDZE Apt Elev	<b>7501</b> <b>236</b> <b>245</b>
----------------------	------------------------	-----------------------------	---

# NDB RWY 14

CONROE/NORTH HOUSTON RGNL (C XO)

	MALSR 	MISSED APPROACH: Climb to 1000 then climbing left turn to 2100 direct ALIBI LOM and hold.

ATIS <b>118.325</b>	HOUSTON APP CON <b>119.7 281.4</b>	CONROE TOWER * <b>124.125 (CTAF) 0</b>	GND CON <b>120.45</b>	CLNC DEL <b>120.45</b>	CLNC DEL <b>119.55</b> (When twr closed)
------------------------	---------------------------------------	---	--------------------------	---------------------------	--



CATEGORY	A	B	C	D
S-14	880-3/4 644 (700-3/4)		880-1 3/8 644 (700-1 3/8)	
<b>C</b> CIRCLING	880-1 635 (700-1)		880-1 7/8 635 (700-1 7/8)	960-2 715 (800-2)

FAF to MAP 5.1 NM					
Knots	60	90	120	150	180
Min:Sec	5:06	3:24	2:33	2:02	1:42

SC-5, 28 NOV 2024 to 26 DEC 2024

SC-5, 28 NOV 2024 to 26 DEC 2024