

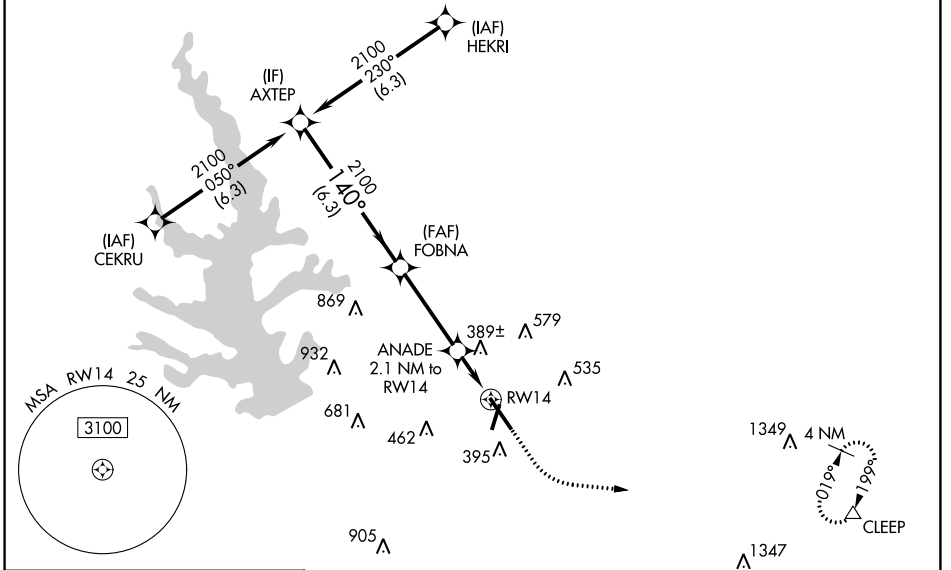
WAAS CH <b>99512</b> <b>W14A</b>	APP CRS <b>140°</b>	Rwy ldg TDZE Apt Elev	<b>7501</b> <b>236</b> <b>245</b>
--	------------------------	-----------------------------	---

# RNAV (GPS) RWY 14

CONROE/NORTH HOUSTON RGNL (C'XO)

<p>For uncompensated Baro-VNAV systems, LNAV/VNAV NA below -6°C (-22°F) or above 54°C (130°F). DME/DME RNP-0.3 NA.</p>	<p>MALS R</p>	<p>MISSED APPROACH: Climb to 700 then climbing left turn to 3100 direct CLEEP and hold.</p>

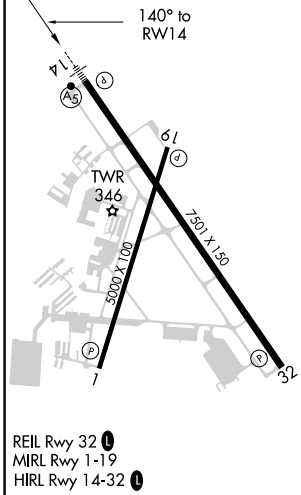
ATIS <b>118.325</b>	HOUSTON APP CON <b>119.7 281.4</b>	CONROE TOWER ★ <b>124.125</b> (CTAF)	GND CON <b>120.45</b>	CLNC DEL <b>120.45</b>	CLNC DEL <b>119.55</b> (When twr closed)
------------------------	---------------------------------------	---	--------------------------	---------------------------	--



SC-5, 28 NOV 2024 to 26 DEC 2024

SC-5, 28 NOV 2024 to 26 DEC 2024

ELEV 245	<b>D</b>	TDZE 236
----------	----------	----------



REIL Rwy 32   
MIRL Rwy 1-19   
HIRL Rwy 14-32

	AXTEP	FOBNA	ANADE	
	2100	2100	2.1 NM to RWY 14	
	140°	140°	*1.1 NM to RWY 14	
	2100		*940	
	6.3 NM	3.6 NM	1 NM	1.1 NM
GP 3.00° TCH 47				
CATEGORY	A	B	C	D
LPV DA		436-½	200 (200-½)	
LNAV/VNAV DA		521-½	285 (300-½)	
LNAV MDA	640-½	404 (400-½)	640-⅝	404 (400-⅝)
<b>C</b> CIRCLING	700-1	455 (500-1)	880-1¾ 635 (700-1¾)	960-2¼ 715 (800-2¼)