

WAAS CH 62819 W32A	APP CRS 321°	Rwy Idg TDZE Apt Elev	7501 245 245
--	------------------------	-----------------------------	---

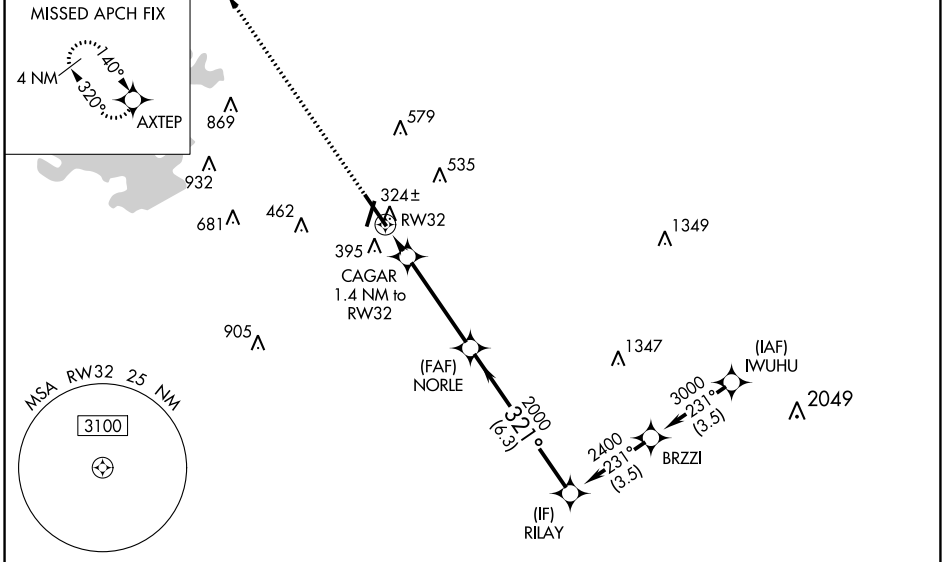
RNAV (GPS) RWY 32

CONROE/NORTH HOUSTON RGNL (CXXO)

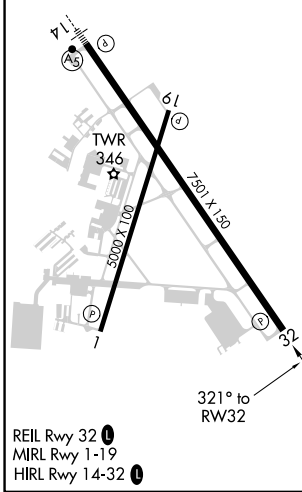
⚠ For uncompensated Baro-VNAV systems, LNAV/VNAV NA below -6°C (-22°F) or above 54°C (130°F). DME/DME RNP-0,3 NA.
⚠ Rwy 32 helicopter visibility reduction below 3/4 SM NA.

MISSED APPROACH: Climb to 2100 direct AXTEP and hold.

ATIS 118.325	HOUSTON APP CON 119.7 281.4	CONROE TOWER * 124.125 (CTAF) 0	GND CON 120.45	CLNC DEL 120.45	CLNC DEL 119.55 (When twr closed)
------------------------	---------------------------------------	---	--------------------------	---------------------------	--



ELEV 245	D	TDZE 245
----------	----------	----------



2100	AXTEP				
*LNAV only.	CAGAR 1.4 NM to RW32	NORLE 2000	RILAY 2400	GP 3.00° TCH 50	
		720*	2000		
	+1.4 NM	4 NM	6.3 NM		
CATEGORY	A	B	C	D	
LPV DA		495-3/4	250 (300-3/4)		
LNAV/VNAV DA		505-7/8	260 (300-7/8)		
LNAV MDA		580-1	335 (400-1)		
C CIRCLING	700-1	455 (500-1)	880-1 3/4 635 (700-1 3/4)	960-2 1/4 715 (800-2 1/4)	

SC-5, 28 NOV 2024 to 26 DEC 2024

SC-5, 28 NOV 2024 to 26 DEC 2024