

(STYCK8.STYCK) 21336

AL-5573 (FAA)

CONROE/NORTH HOUSTON RGNL (C̄XO)

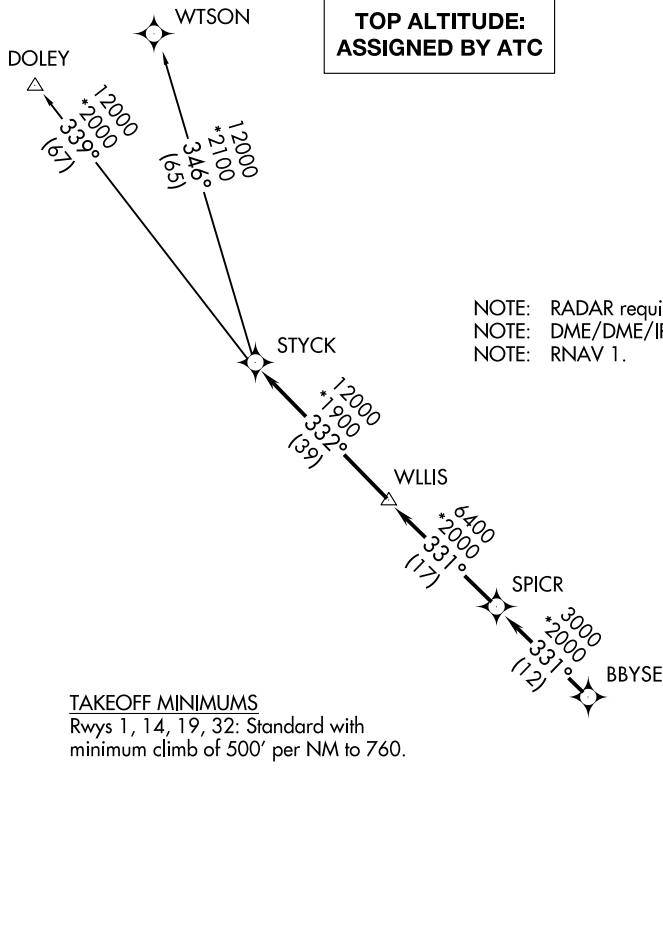
# STYCK EIGHT DEPARTURE (RNAV)

HOUSTON, TEXAS

ATIS  
 118.325  
 CLNC DEL  
 120.45  
 CLNC DEL  
 119.55 (when twr closed)  
 GND CON  
 120.45  
 CONROE TOWER ★  
 124.125 (CTAF)  
 HOUSTON DEP CON  
 119.7 281.4

**TOP ALTITUDE:  
 ASSIGNED BY ATC**

NOTE: RADAR required.  
 NOTE: DME/DME/IRU or GPS required.  
 NOTE: RNAV 1.



### TAKEOFF MINIMUMS

Rwys 1, 14, 19, 32: Standard with minimum climb of 500' per NM to 760.

NOTE: Chart not to scale.



### DEPARTURE ROUTE DESCRIPTION

TAKEOFF RUNWAY 1: Climb on heading 012° to 760 for RADAR vectors to BBYSE, thence. . .  
TAKEOFF RUNWAY 14: Climb on heading 140° to 760 for RADAR vectors to BBYSE, thence. . .  
TAKEOFF RUNWAY 19: Climb on heading 192° to 760 for RADAR vectors to BBYSE, thence. . .  
TAKEOFF RUNWAY 32: Climb on heading 320° to 760 for RADAR vectors to BBYSE, thence. . .  
 . . . on track 331° to SPICR, then on track 331° to WLLIS, then on track 332° to STYCK, then on (transition). Maintain ATC assigned altitude. Expect filed altitude 10 minutes after departure.

DOLEY TRANSITION (STYCK8.DOLEY)

WTSON TRANSITION (STYCK8.WTSON)

# STYCK EIGHT DEPARTURE (RNAV)

(STYCK8.STYCK) 07OCT21

HOUSTON, TEXAS

CONROE/NORTH HOUSTON RGNL (C̄XO)

SC-5, 28 NOV 2024 to 26 DEC 2024

SC-5, 28 NOV 2024 to 26 DEC 2024