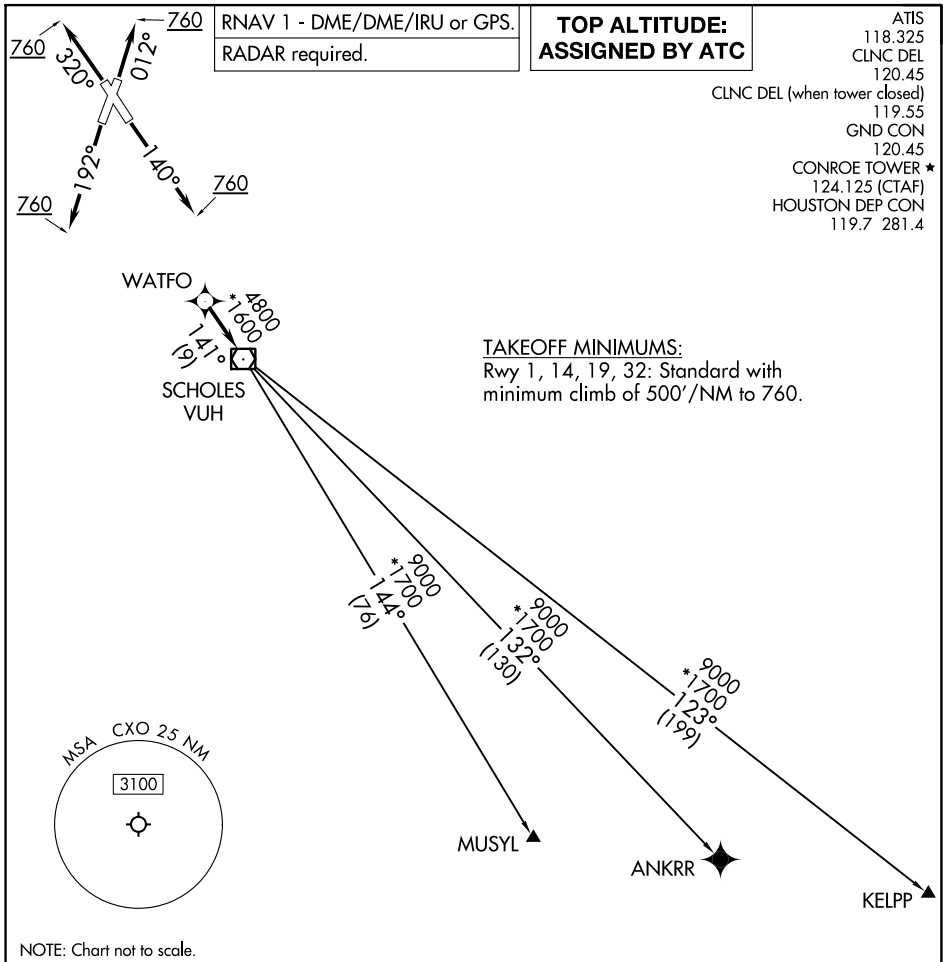


(WATFO6.WATFO) 23222

AL-5573 (FAA)

CONROE/NORTH HOUSTON RGNL (CXO)  
HOUSTON, TEXAS

# WATFO SIX DEPARTURE (RNAV)



SC-5, 28 NOV 2024 to 26 DEC 2024

SC-5, 28 NOV 2024 to 26 DEC 2024

**DEPARTURE ROUTE DESCRIPTION**

**TAKEOFF RUNWAY 1:** Climb on heading 012° to 760, for RADAR vectors to WATFO, thence. . . .

**TAKEOFF RUNWAY 14:** Climb on heading 140° to 760, for RADAR vectors to WATFO, thence. . . .

**TAKEOFF RUNWAY 19:** Climb on heading 192° to 760, for RADAR vectors to WATFO, thence. . . .

**TAKEOFF RUNWAY 32:** Climb on heading 320° to 760, for RADAR vectors to WATFO, thence. . . .

. . . on track 141° to VUH VOR/DME, then on (transition). Maintain ATC assigned altitude.  
Expect filed altitude 10 minutes after departure.

ANKRR TRANSITION (WATFO6.ANKRR)  
KELPP TRANSITION (WATFO6.KELPP)  
MUSYL TRANSITION (WATFO6.MUSYL)

WATFO SIX DEPARTURE (RNAV)  
(WATFO6.WATFO) 10AUG23

HOUSTON, TEXAS  
CONROE/NORTH HOUSTON RGNL (CXO)