

APP CRS <b>331°</b>	Rwy Idg TDZE Apt Elev	<b>5201</b> <b>3459</b> <b>3459</b>
------------------------	-----------------------------	---

# RNAV (GPS) RWY 34

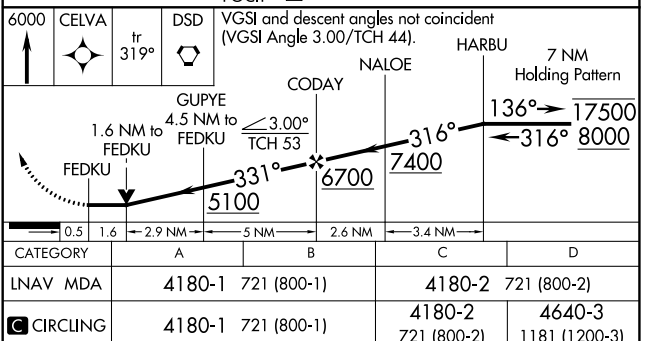
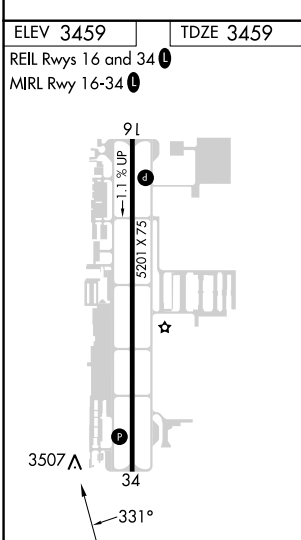
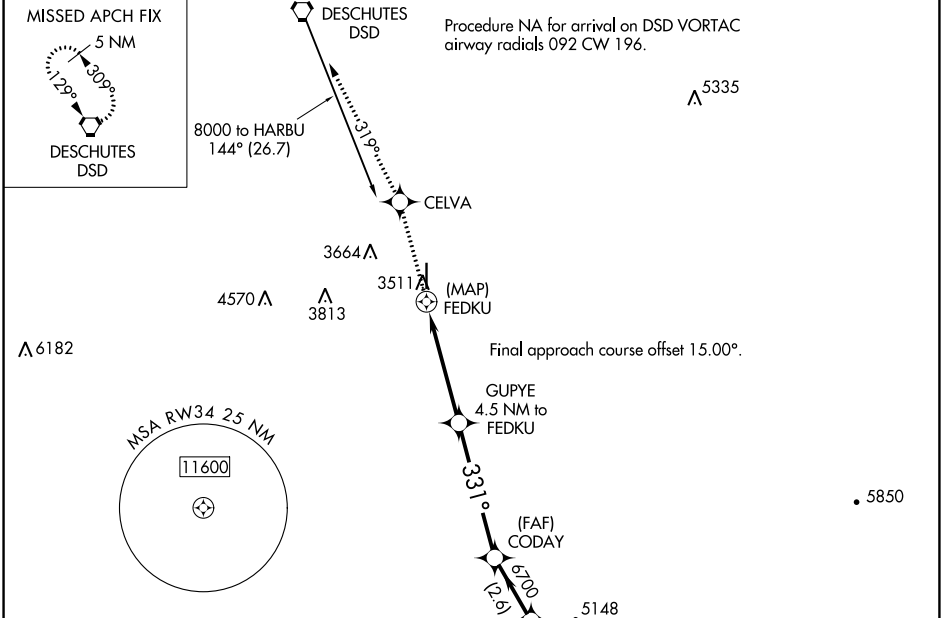
BEND MUNI (BDN)

**RNP APCH - GPS.**

**▼** Rwy 34 helicopter visibility reduction below  $\frac{3}{4}$  SM NA. When local altimeter setting not received, use Redmond altimeter setting and increase all MDAs 100 feet and LNAV visibility Cats B, C, and D  $\frac{1}{2}$  SM and Circling visibility Cats A, B, and C  $\frac{1}{2}$  SM.

**▲** MISSED APPROACH: Climb to 6000 direct CELVA and on track 319° to DSD VORTAC and hold.

AWOS-3 <b>134.425</b>	SEATTLE CENTER <b>126.15 269.475</b>	UNICOM <b>123.0 (CTAF) 0</b>
--------------------------	---	---------------------------------



NW-1, 28 NOV 2024 to 26 DEC 2024

NW-1, 28 NOV 2024 to 26 DEC 2024