

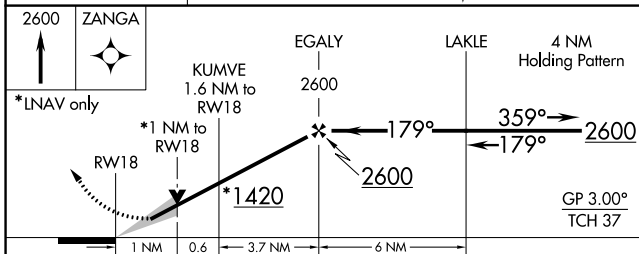
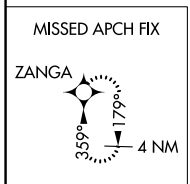
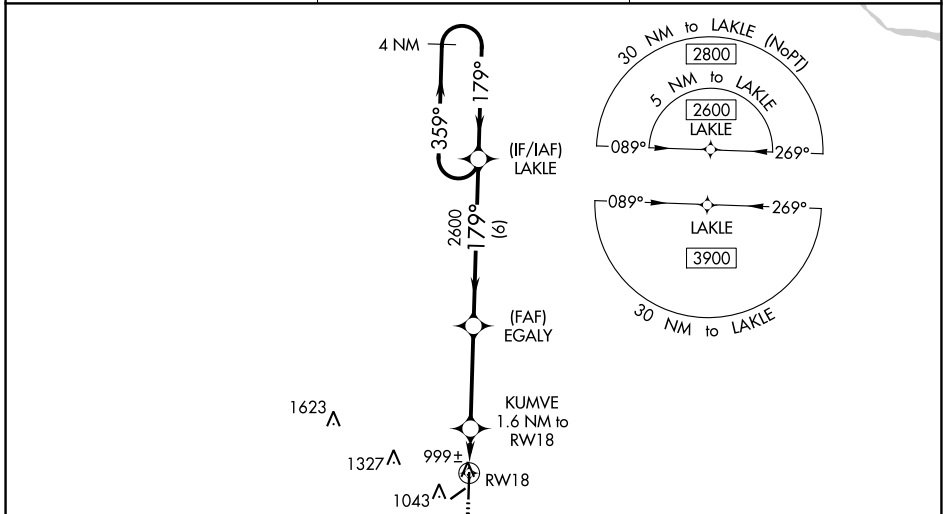
WAAS CH <b>61133</b> <b>W18A</b>	APP CRS <b>179°</b>	Rwy Idg <b>5500</b> TDZE <b>883</b> Apt Elev <b>910</b>
--	------------------------	---

**RNAV (GPS) RWY 18**  
SEDALIA RGNL (DMO)

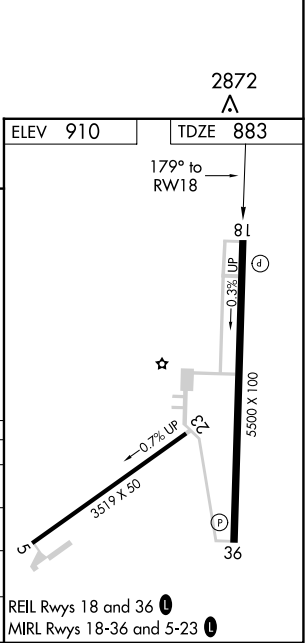
**⚠** DME/DME RNP-0.3 NA. When local altimeter setting not received, use Whiteman AFB altimeter setting; increase all DA 46 feet and LNAV/VNAV visibility 1/8 mile; increase all MDA 60 feet and Cats C and D visibilities 1/4 mile. For uncompensated Baro-VNAV systems, LNAV/VNAV NA below -16°C (3°F) or above 54°C (130°F). Baro-VNAV and VDP NA when using Whiteman AFB altimeter setting. Night Landing Rwy 5, 23 NA.

**MISSED APPROACH:** Climb to 2600 direct ZANGA and hold.

ASOS <b>120.525</b>	WHITEMAN APP CON* <b>127.45 284.0</b>	UNICOM <b>122.8 (CTAF)</b>
------------------------	--	-------------------------------



CATEGORY	A	B	C	D
LPV DA		1133-1	250 (300-1)	
LNAV/VNAV DA		1155-1	272 (300-1)	
LNAV MDA		1260-1	377 (400-1)	
<b>C</b> CIRCLING	1360-1 450 (500-1)	1460-1 550 (600-1)	1640-2 730 (800-2)	1640-2 1/4 730 (800-2 1/4)



NC-3, 28 NOV 2024 to 26 DEC 2024

NC-3, 28 NOV 2024 to 26 DEC 2024