

WAAS CH <b>53336</b> <b>W27A</b>	APP CRS <b>274°</b>	Rwy Idg TDZE <b>36</b> Apt Elev <b>38</b>	<b>4002</b>
--	------------------------	---	-------------

# RNAV (GPS) RWY 27

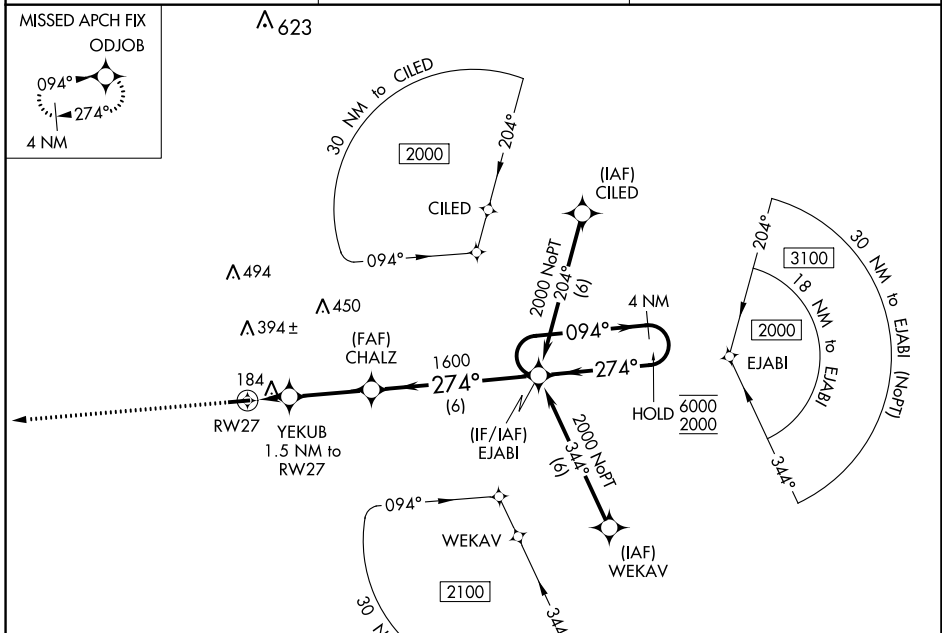
WALLACE-PENDER (ACZ)

RNP APCH - GPS.

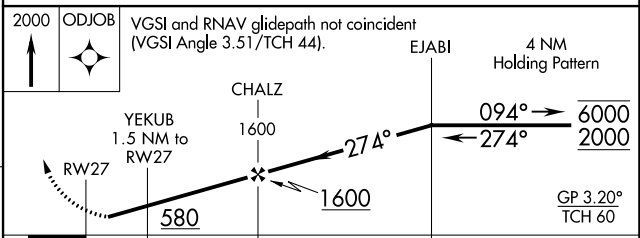
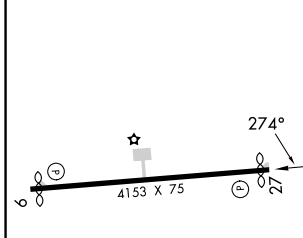
**⚠** Circling Rwy 9 NA at night. Rwy 27 helicopter visibility reduction below 3/4 SM NA.  
**⚠** NA Baro-VNAV NA. When local altimeter setting not received, use Kenansville altimeter setting.

MISSED APPROACH: Climb to 2000 direct ODJOB and hold.

AWOS-3P <b>121.07</b>	WILMINGTON APP CON★ <b>135.75 317.425</b>	UNICOM <b>122.8 (CTAF) 0</b>
--------------------------	--	---------------------------------



ELEV 38	TDZE 36
---------	---------



CATEGORY	A	B	C	D
LPV DA	406-1 370 (400-1)			NA
LNAV/VNAV DA	599-1 5/4 563 (600-1 3/4)			NA
LNAV MDA	560-1 524 (600-1)		560-1 1/2 524 (600-1 1/2)	
<b>C</b> CIRCLING	620-1 582 (600-1)		820-2 1/4 782 (800-2 1/4) 820-2 1/2 782 (800-2 1/2)	

SE-2, 28 NOV 2024 to 26 DEC 2024

SE-2, 28 NOV 2024 to 26 DEC 2024