

WAAS CH 65936 W18A	APP CRS 183°	Rwy Idg TDZE Apt Elev	4359 539 539
--	------------------------	-----------------------------	---

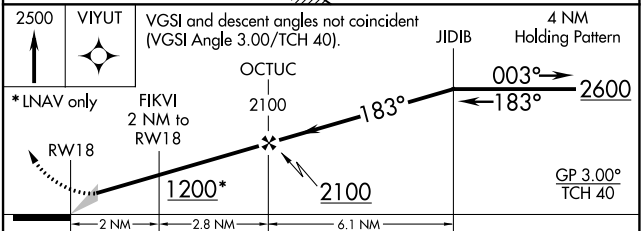
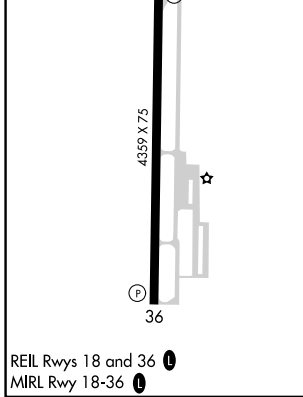
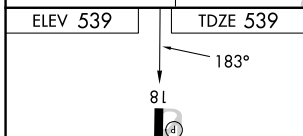
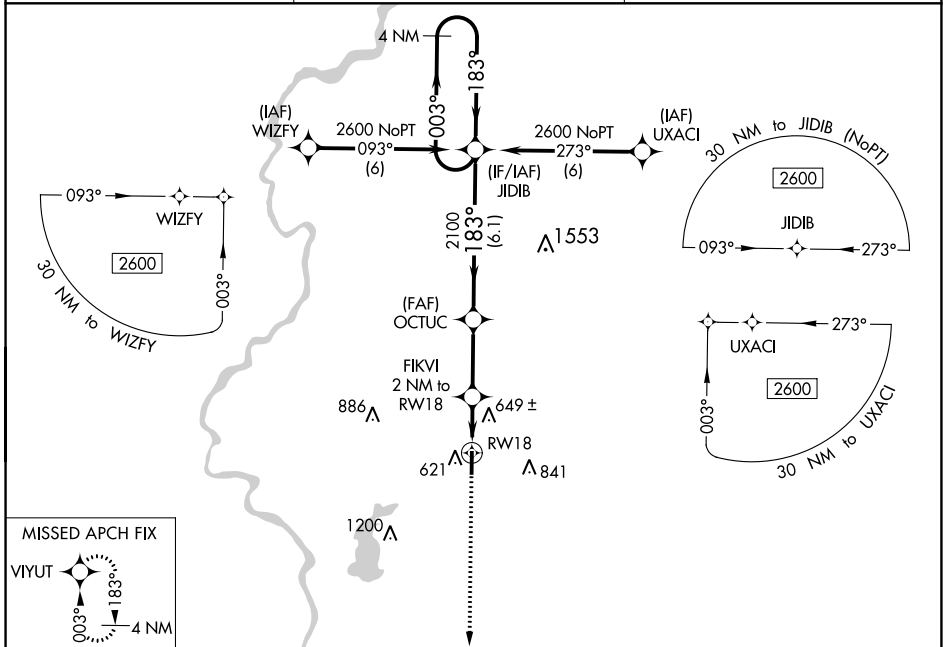
RNAV (GPS) RWY 18

SULLIVAN COUNTY (SIV)

Baro-VNAV NA. DME/DME RNP-0.3 NA. When Robinson altimeter setting is not received, use Terre Haute Intl-Hulman Field altimeter setting and increase all DA/MDA 20 feet.

MISSED APPROACH: Climb to 2500 direct VIYUT and hold.

RSV AWOS-3 120.5	HULMAN APP CON 135.35 339.8	UNICOM 122.8 (CTAF)
----------------------------	---------------------------------------	-------------------------------



CATEGORY	A	B	C	D
LPV DA	826-1	287 (300-1)		NA
LNNAV/VNAV DA	826-1	287 (300-1)		NA
LNNAV MDA	940-1	401 (500-1)		NA
CIRCLING	1000-1	1080-1		NA
	461 (500-1)	541 (600-1)		

EC-2, 28 NOV 2024 to 26 DEC 2024

EC-2, 28 NOV 2024 to 26 DEC 2024