

WAAS CH <b>86337</b> <b>W24A</b>	APP CRS <b>242°</b>	Rwy Idg TDZE Apt Elev	<b>3300</b> <b>9</b> <b>9</b>
--	------------------------	-----------------------------	-------------------------------------

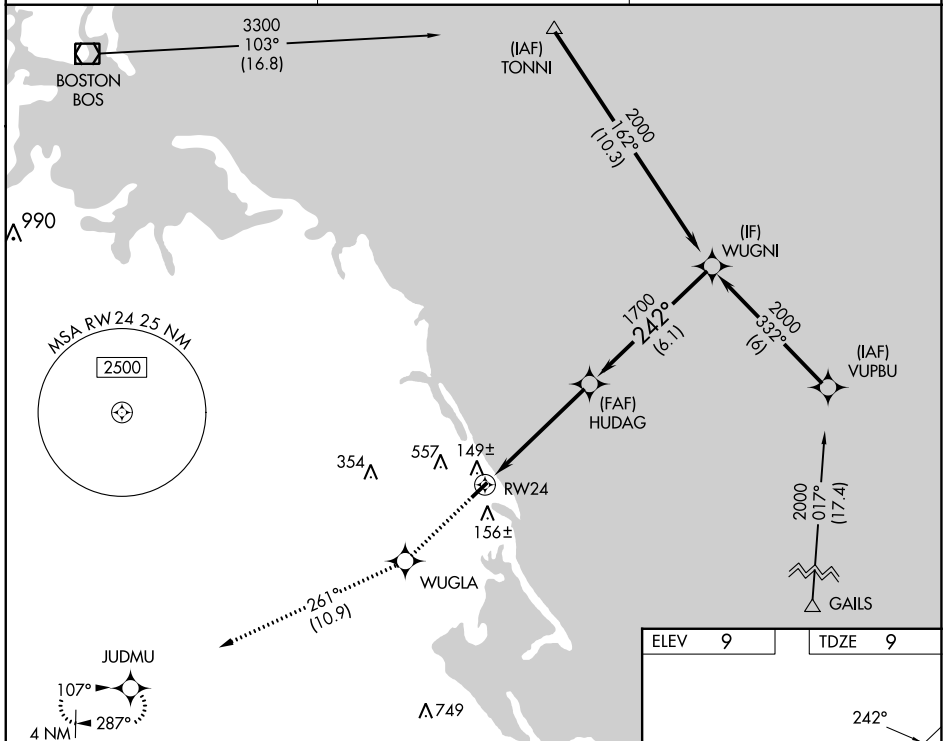
# RNAV (GPS) RWY 24

MARSHFIELD MUNI - GEORGE HARLOW FLD (GHG)

**⚠** For uncompensated Baro-VNAV systems, LNAV/VNAV NA below -15°C (5°F) or above 54°C (130°F). DME/DME RNP-0.3 NA. When local altimeter setting not received, use Plymouth altimeter setting and increase all DA 47 feet, and all MDA 60 feet; increase LPV all Cats visibility ¼ mile, increase LNAV/VNAV all Cats visibility ⅓ mile. Baro VNAV and VDP NA when using Plymouth altimeter setting. Helicopter visibility reduction below ¾ SM NA.

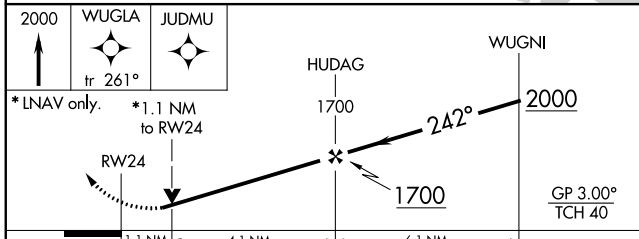
MISSED APPROACH: Climb to 2000 direct WUGLA and on track 261° to JUDMU and hold.

AWOS-3 <b>120.0</b>	BOSTON APP CON <b>124.1</b>	UNICOM <b>122.8 (CTAF) 0</b>
------------------------	--------------------------------	---------------------------------

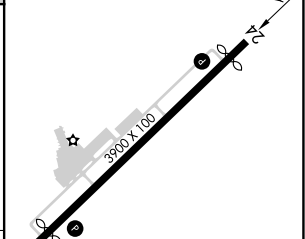


NE-1, 28 NOV 2024 to 26 DEC 2024

NE-1, 28 NOV 2024 to 26 DEC 2024



ELEV 9	TDZE 9
--------	--------



CATEGORY	A	B	C	D
LPV DA	359-1 1/8	350 (400-1 1/8)		NA
LNAV/VNAV DA	403-1 3/8	394 (400-1 3/8)		NA
LNAV MDA	400-1	391 (400-1)		NA
<b>C</b> CIRCLING	500-1 491 (500-1)	880-1 1/4 871 (900-1 1/4)		NA

REIL Rwy 6 and 24  
MIRL Rwy 6-24

# RNAV (GPS) RWY 24