

VOR/DME COU 110.2 Chan 39	APP CRS 196°	Rwy Idg TDZE 889 Apt Elev 889
---	------------------------	---

VOR Y RWY 20

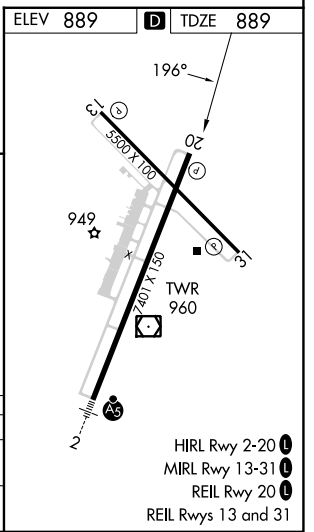
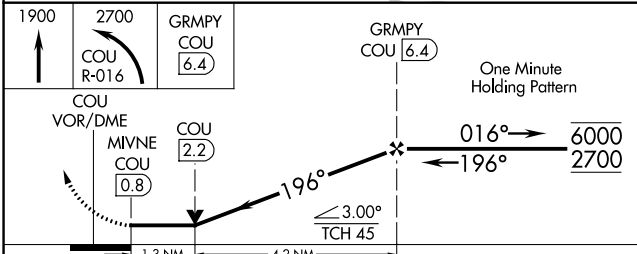
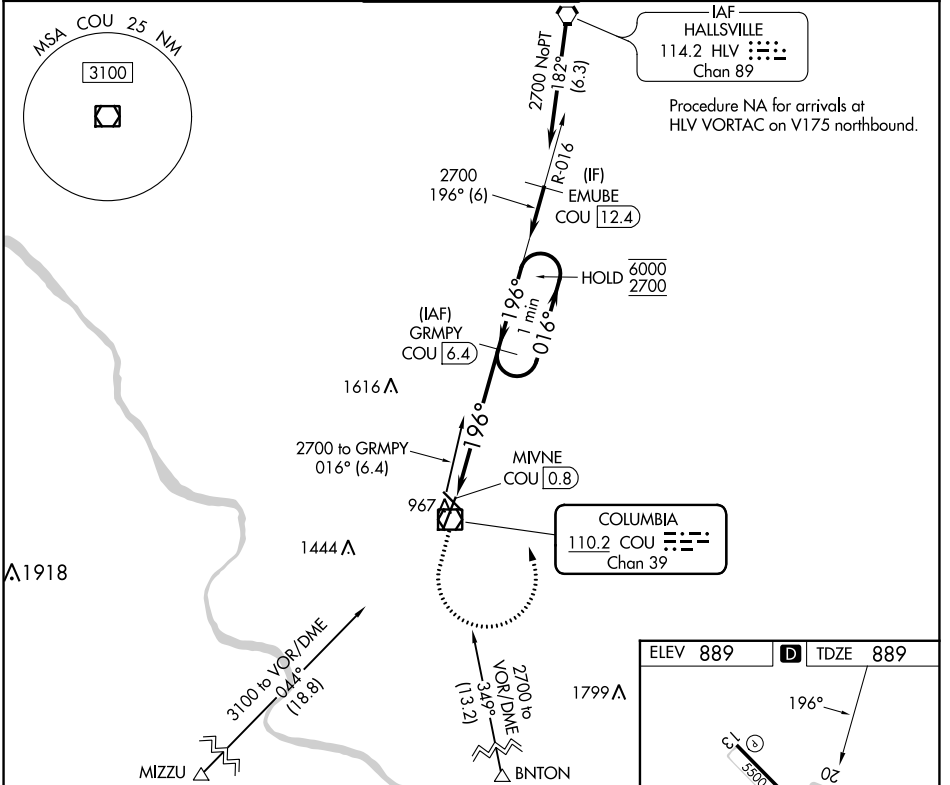
COLUMBIA RGNL (COU)

DME required.

⚠ Circling NA for Cat D west of Rwy 2 and 13.

MISSED APPROACH: Climb to 1900 then climbing left turn to 2700 on COU VOR/DME R-016 to GRMPY/COU 6.4 DME and hold.

ATIS 128.45	MIZZU APP CON 124.375 353.925	COLUMBIA TOWER ★ 119.3 (CTAF) 363.25	GND CON 121.6	UNICOM 122.95
-----------------------	---	---	-------------------------	-------------------------



CATEGORY	A	B	C	D
S-20	1360-1 471 (500-1)		1360-1 $\frac{3}{8}$ 471 (500-1 $\frac{3}{8}$)	
C CIRCLING	1360-1 471 (500-1)		1360-1 $\frac{1}{2}$ 471 (500-1 $\frac{1}{2}$)	1440-2 551 (600-2)

NC-3, 28 NOV 2024 to 26 DEC 2024

NC-3, 28 NOV 2024 to 26 DEC 2024