

(TERPZ8.TERPZ) 24193

AL-5596 (FAA)

EASTON/NEWNAM FLD (ESN)

TERPZ EIGHT DEPARTURE (RNAV)

EASTON, MARYLAND

POTOMAC DEP CON
 133.75 254.35
 ATIS
 124.475
 CLNC DEL
 119.075
 GND CON
 119.075
 EASTON TOWER *
 118.525 (CTAF)

RNAV 1 - DME/DME/IRU or GPS.

RADAR required.

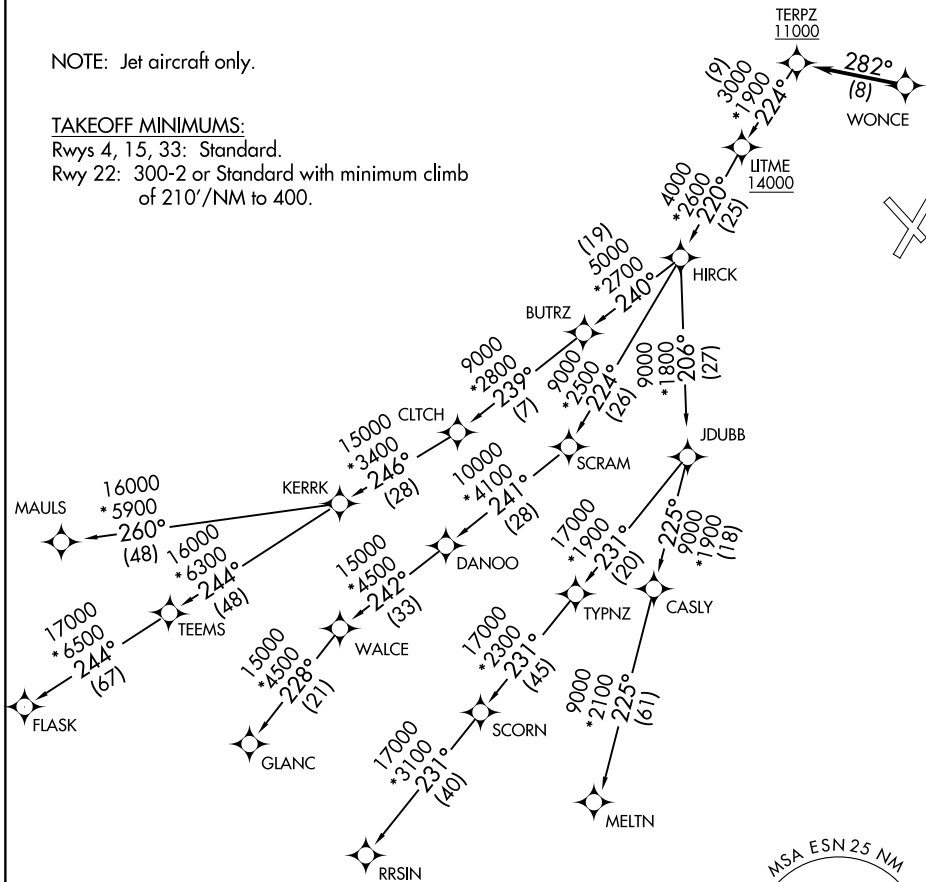
TOP ALTITUDE:
17000

NOTE: Jet aircraft only.

TAKEOFF MINIMUMS:

Rwys 4, 15, 33: Standard.

Rwy 22: 300-2 or Standard with minimum climb of 210'/NM to 400.



NE-3, 28 NOV 2024 to 26 DEC 2024

NE-3, 28 NOV 2024 to 26 DEC 2024

NOTE: Chart not to scale.

TERPZ EIGHT DEPARTURE (RNAV)

(TERPZ8.TERPZ) 11JUL24

EASTON, MARYLAND

EASTON/NEWNAM FLD (ESN)



DEPARTURE ROUTE DESCRIPTION

Climb on assigned heading for RADAR vectors to WONCE, thence. . . .

. . . then on track 282° to cross TERPZ at or above 11000, then on assigned transition.
Maintain 17000, expect filed altitude 10 minutes after departure.

CLTCH TRANSITION (TERPZ8.CLTCH)

FLASK TRANSITION (TERPZ8.FLASK)

GLANC TRANSITION (TERPZ8.GLANC)

MAULS TRANSITION (TERPZ8.MAULS)

MELTN TRANSITION (TERPZ8.MELTN)

RRSIN TRANSITION (TERPZ8.RRSIN)

NE-3, 28 NOV 2024 to 26 DEC 2024

NE-3, 28 NOV 2024 to 26 DEC 2024