

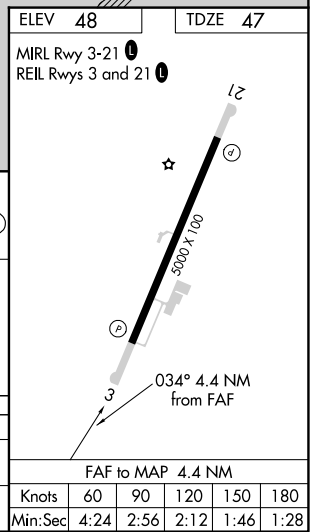
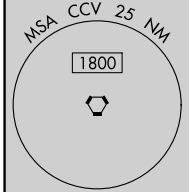
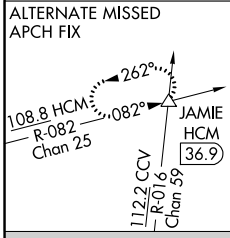
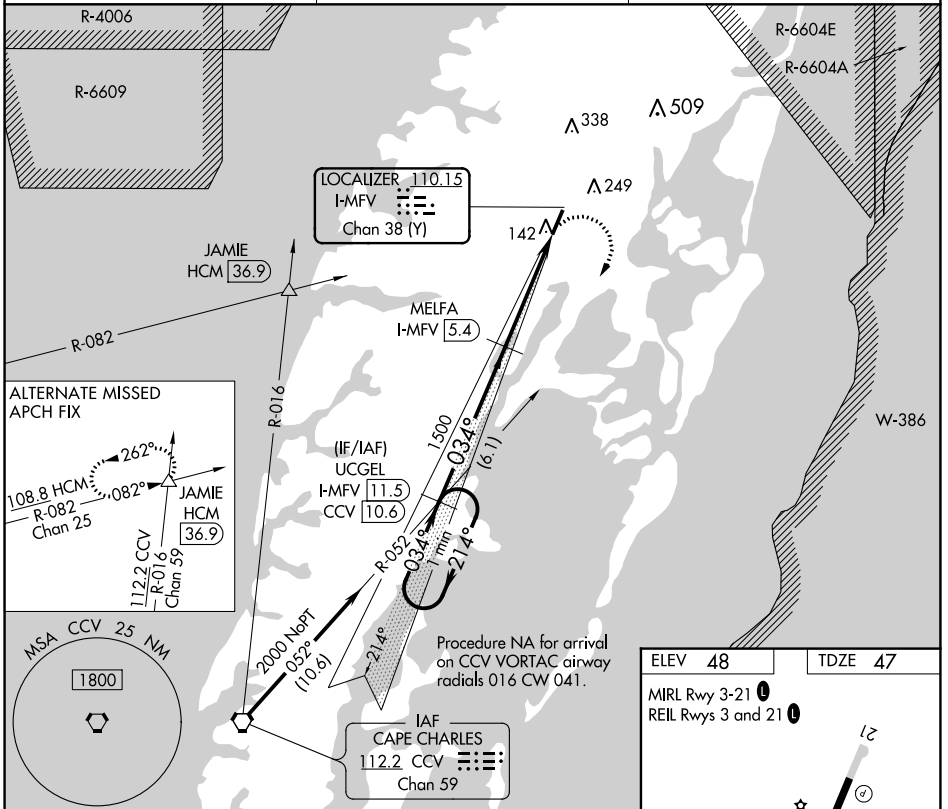
LOC/DME I-MFV <b>110.15</b> Chan 38 (Y)	APP CRS <b>034°</b>	Rwy ldg TDZE <b>47</b> Apt Elev <b>48</b>
---	------------------------	---

# LOC RWY 3

ACCOMACK COUNTY (MFV)

**⚠** DME required. Rwy 3 helicopter visibility reduction below 3/4 SM NA.  
**⚠** MISSED APPROACH: Climbing right turn to 2000 on heading 220° and CCV VORTAC R-052 to UCGEL/CCV 10.6 DME and hold.

AWOS-3 <b>118.175</b>	PATUXENT APP CON * <b>127.95 314.0</b>	UNICOM <b>122.8 (CTAF)</b> <b>⓪</b>
--------------------------	---	--



One Minute Holding Pattern	UCGEL I-MFV 11.5	2000	CCV R-052	UCGEL CCV 10.6
	MELFA I-MFV 5.4	1500	I-MFV 2.3	I-MFV 1
2000 ← 214° / 034° →		3.00° TCH 40		
6.1 NM		3.1 NM		1.3
CATEGORY	A	B	C	D
S-3	500-1	453 (500-1)	500-1 3/8	453 (500-1 3/8)
<b>⓪</b> CIRCLING	500-1 452 (500-1)	560-1 512 (600-1)	700-1 3/4 652 (700-1 3/4)	700-2 652 (700-2)

NE-3, 28 NOV 2024 to 26 DEC 2024

NE-3, 28 NOV 2024 to 26 DEC 2024