

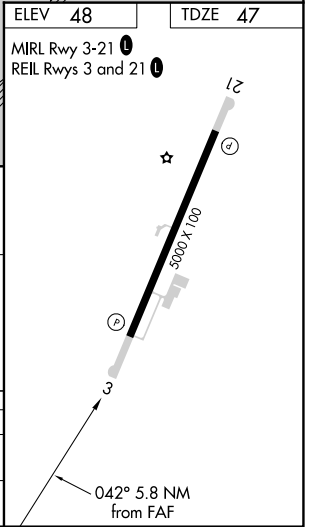
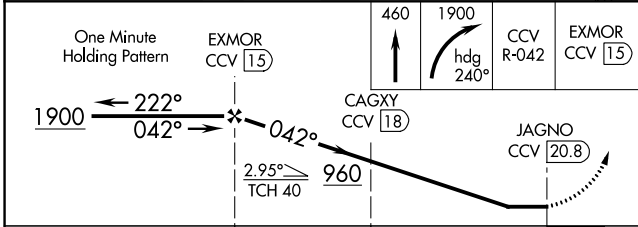
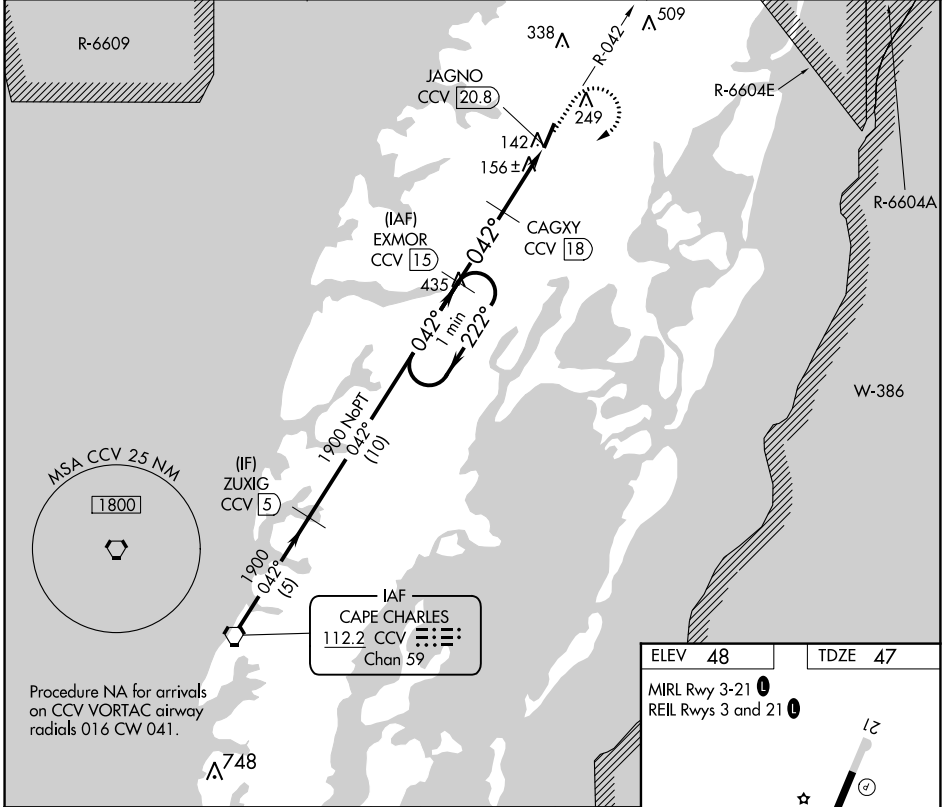
VORTAC CCV <b>112.2</b> Chan <b>59</b>	APP CRS <b>042°</b>	Rwy ldg <b>5000</b> TDZE <b>47</b> Apt Elev <b>48</b>
--	------------------------	---

**VOR RWY 3**  
ACCOMACK COUNTY (MFV)

**▼** DME required.  
Rwy 3 helicopter visibility reduction below  $\frac{3}{4}$  SM NA.

MISSED APPROACH: Climb to 460 then climbing right turn to 1900 on heading 240° and CCV VORTAC R-042 to EXMOR/CCV 1.5 DME and hold.

AWOS-3 <b>118.175</b>	PATUXENT APP CON* <b>127.95 314.0</b>	UNICOM <b>122.8 (CTAF) 0</b>
--------------------------	--	---------------------------------



CATEGORY	A	B	C	D
S-3	440-1	393 (400-1)	440-1 $\frac{1}{8}$	393 (400-1 $\frac{1}{8}$ )
<b>C</b> CIRCLING	500-1 452 (500-1)	560-1 512 (600-1)	700-1 $\frac{3}{4}$ 652 (700-1 $\frac{3}{4}$ )	700-2 652 (700-2)

NE-3, 28 NOV 2024 to 26 DEC 2024

NE-3, 28 NOV 2024 to 26 DEC 2024