

APP CRS 272°	Rwy Idg 4401
	TDZE 796
	Apt Elev 796

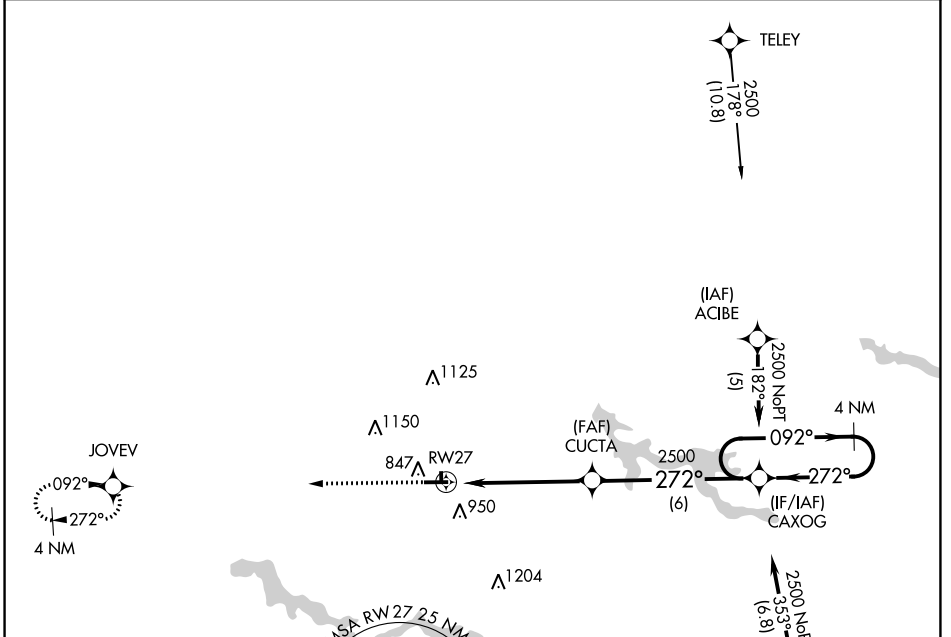
RNAV (GPS) RWY 27

WABASH MUNI (IWH)

NA DME/DME RNP-0.3 NA. Night landing: Rwy 18, 36 NA. Helicopter visibility reduction below 3/4 SM NA. Use Kokomo altimeter setting; when not received, use Marion altimeter setting.

MISSED APPROACH: Climb to 2500 direct JOVEV WP and hold.

OKK AWOS-3PT 128.675	GRISSOM APP CON * 121.05 338.275	UNICOM 122.8 (CTAF) L
--------------------------------	--	--



ELEV 796 TDZE 796

Profile view diagram showing the vertical profile of the approach. It includes the runway (RWY 27) and the vertical profile of the approach. Key altitudes and distances are marked: 81 feet at the runway end, 36 feet at the start of the approach, and 4401 feet at the start of the approach. The vertical profile shows a 3.00 degree descent angle and a TCH of 40 feet. The diagram also shows the MSA (Minimum Safe Altitude) for RWY 27 at 25 NM, which is 2700 feet.

LIRL Rwy 18-36
MIRL Rwy 9-27 **L**
REIL Rwy 9 and 27 **L**

2500 JOVEV	4 NM Holding Pattern
CUCTA	CAXOG
1.3 NM to RWY 27	272°
3.00° TCH 40	092°
1.3	3.9 NM
6 NM	2500
VGS1 and descent angles not coincident (VGS1 Angle 3.00/TCH 32).	
CATEGORY	A B C D
LNAV MDA	1280-1 484 (500-1) 1280-1 3/8 484 (500-1 3/8) NA
C CIRCLING	1300-1 504 (600-1) 1440-1 644 (700-1) 1560-2 1/4 764 (800-2 1/4) NA

EC-2, 28 NOV 2024 to 26 DEC 2024

EC-2, 28 NOV 2024 to 26 DEC 2024