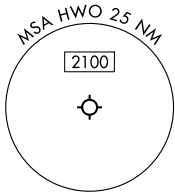


MIAMI ONE DEPARTURE
(MIA1 .MIA) 05SEPF24

RADAR and DME required.



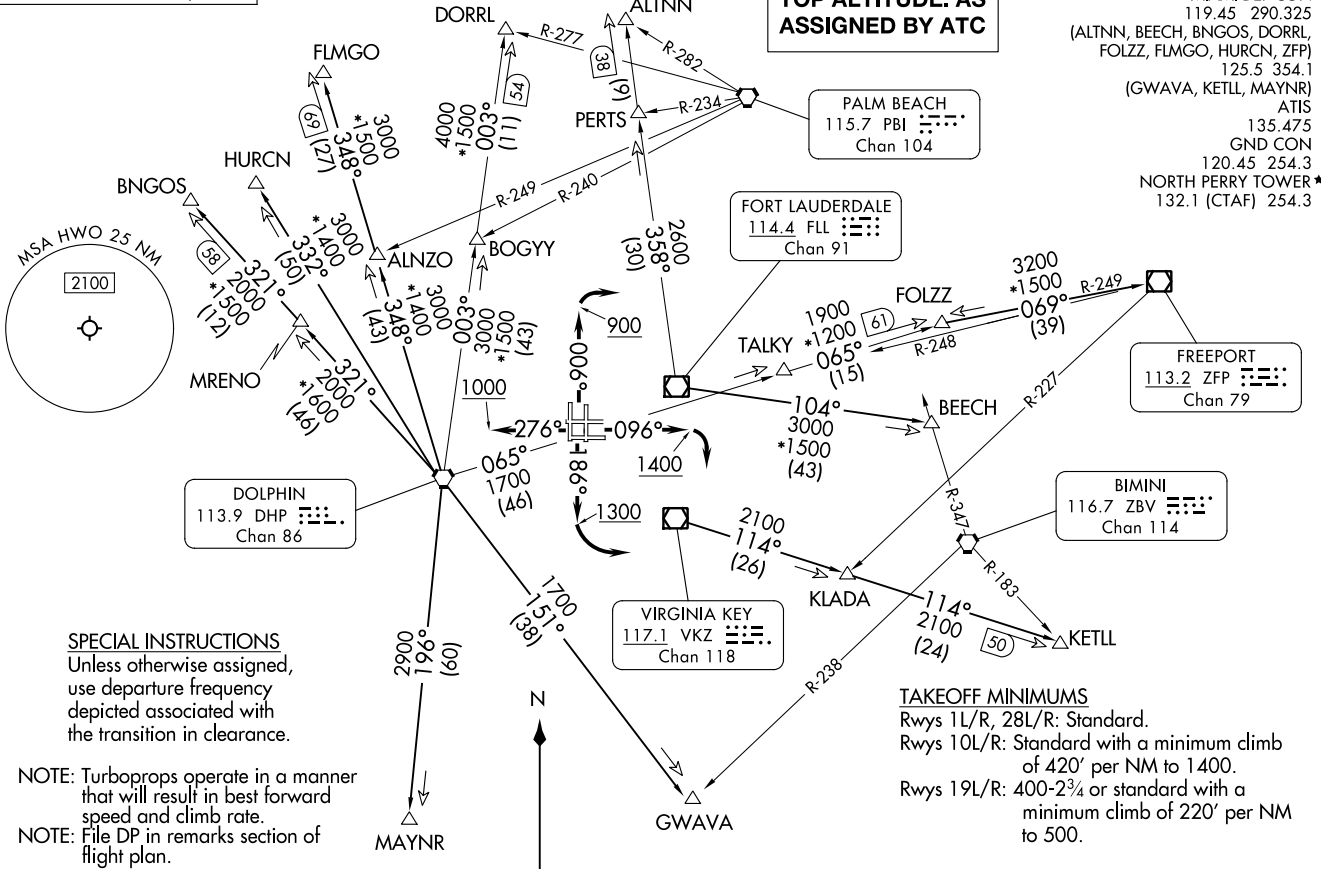
TOP ALTITUDE: AS
ASSIGNED BY ATC

MIAMI DEP CON
119.45 290.325
(ALTNN, BEECH, BNGOS, DORRL,
FOLZZ, FLMGO, HURCN, ZFP)
125.5 354.1
(GWAVA, KETLL, MAYNR)
ATIS
135.475
GND CON
120.45 254.3
NORTH PERRY TOWER*
132.1 (CTAF) 254.3

(MIA1 .MIA) 24249
MIAMI ONE DEPARTURE

AL-5606 (FAA)

(HWO) 24249
NORTH PERRY (HWO)
HOLLYWOOD, FLORIDA



SPECIAL INSTRUCTIONS
Unless otherwise assigned,
use departure frequency
depicted associated with
the transition in clearance.

NOTE: Turboprops operate in a manner
that will result in best forward
speed and climb rate.

NOTE: File DP in remarks section of
flight plan.

NOTE: Chart not to scale.



TAKEOFF MINIMUMS

Rwys 1L/R, 28L/R: Standard.
Rwys 10L/R: Standard with a minimum climb
of 420' per NM to 1400.
Rwys 19L/R: 400-2³/₄ or standard with a
minimum climb of 220' per NM
to 500.

(CONTINUED ON FOLLOWING PAGE)

HOLLYWOOD, FLORIDA
NORTH PERRY (HWO)

MIAMI ONE DEPARTURE



DEPARTURE ROUTE DESCRIPTION

TAKEOFF RUNWAYS 1L/R: Climb on heading 006° to 900 before turning right, thence...
TAKEOFF RUNWAYS 10L/R: Climb on heading 096° to 1400 before turning right, thence...
TAKEOFF RUNWAYS 19L/R: Climb on heading 186° to 1300 before turning left, thence...
TAKEOFF RUNWAYS 28L/R: Climb on heading 276° to 1000, thence...

... on transition, maintain ATC assigned altitude. Expect filed altitude ten (10) minutes after departure.

ALTNN TRANSITION (MIA1.ALTNN): From over FLL VOR/DME on FLL R-358 to ALTNN.

BEECH TRANSITION (MIA1.BEECH): From over FLL VOR/DME on FLL R-104 to BEECH.

BNGOS TRANSITION (MIA1.BNGOS): From over DHP VORTAC on DHP R-321 to BNGOS.

DORRL TRANSITION (MIA1.DORRL): From over DHP VORTAC on DHP R-003 to DORRL.

FLMGO TRANSITION (MIA1.FLMGO): From over DHP VORTAC on DHP R-348 to FLMGO.

FOLZZ TRANSITION (MIA1.FOLZZ): From over DHP VORTAC on DHP R-065 to FOLZZ.

FREEPORT TRANSITION (MIA1.ZFP): From over DHP VORTAC on DHP R-065 to FOLZZ then on ZFP R-249 to ZFP VOR/DME.

GWAVA TRANSITION (MIA1.GWAVA): From over DHP VORTAC on DHP R-151 to GWAVA.

HURCN TRANSITION (MIA1.HURCN): From over DHP VORTAC on DHP R-332 to HURCN.

KETLL TRANSITION (MIA1.KETLL): From over VKZ VOR/DME on VKZ R-114 to KETLL.

MAYNR TRANSITION (MIA1.MAYNR): From over DHP VORTAC on DHP R-196 to MAYNR.

SE-3, 28 NOV 2024 to 26 DEC 2024

SE-3, 28 NOV 2024 to 26 DEC 2024