

APP CRS	Rwy Idg	3180
269°	TDZE	9
	Apt Elev	9

RNAV (GPS) RWY 28R

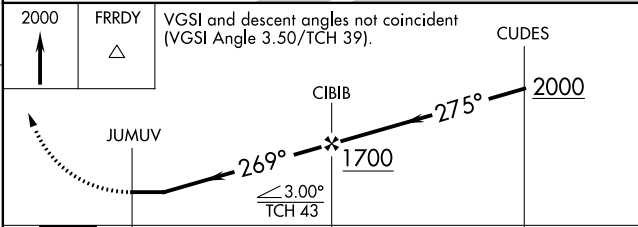
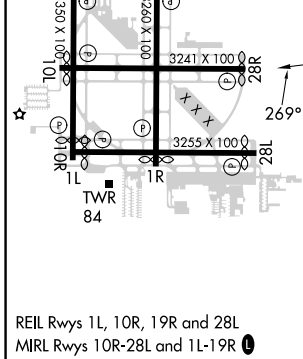
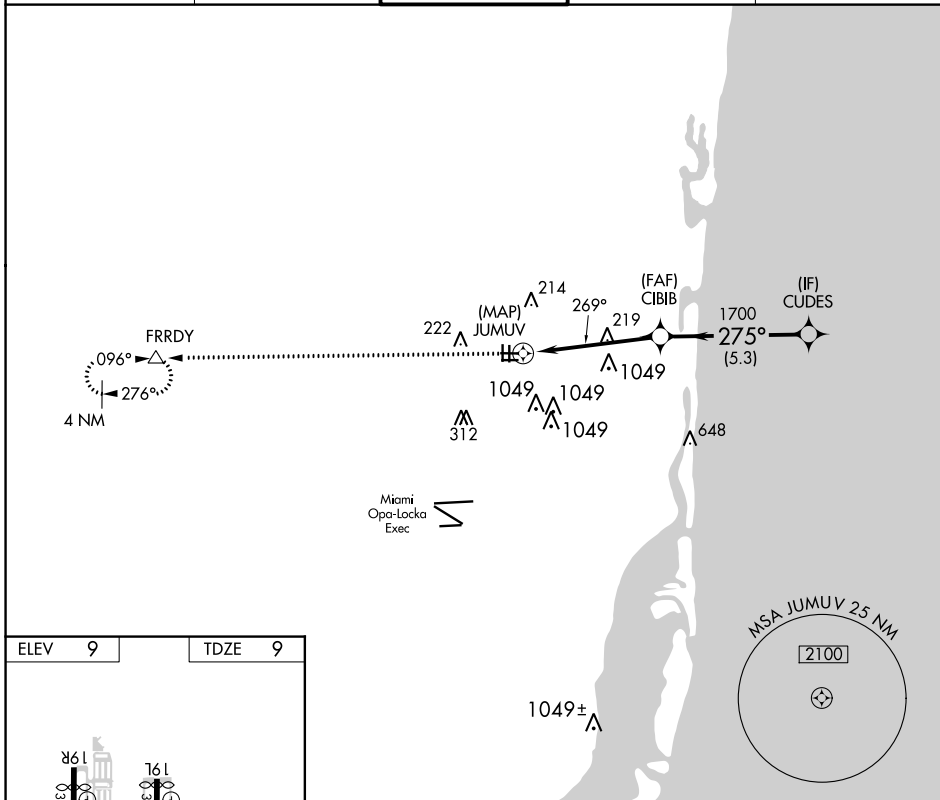
NORTH PERRY (HWO)

RNP APCH. RADAR required for procedure entry.

▼ Rwy 28R helicopter visibility reduction below $\frac{3}{4}$ SM NA. Straight-in minimums NA at night. Circling Rwy 1R, 10L, 19L, 28R NA at night. Circling NA for Cat C south of Rwy 10R-28L.

MISSED APPROACH: Climb to 2000 direct FRRDY and hold.

ATIS 135.475	MIAMI APP CON 128.6 306.975	NORTH PERRY TOWER* 132.1 (CTAF) 0 254.3	GND CON 120.45 254.3	UNICOM 122.95
------------------------	---------------------------------------	---	--------------------------------	-------------------------



CATEGORY	A	B	C	D
LNAV MDA	520-1 511 (600-1)		520-1 $\frac{3}{8}$ 511 (600-1 $\frac{3}{8}$)	NA
CIRCLING	560-1 551 (600-1)		560-1 $\frac{1}{2}$ 551 (600-1 $\frac{1}{2}$)	NA

SE-3, 28 NOV 2024 to 26 DEC 2024

SE-3, 28 NOV 2024 to 26 DEC 2024