

APP CRS	Rwy Idg	5003
074°	TDZE	643
	Apt Elev	647

RNAV (GPS) RWY 8

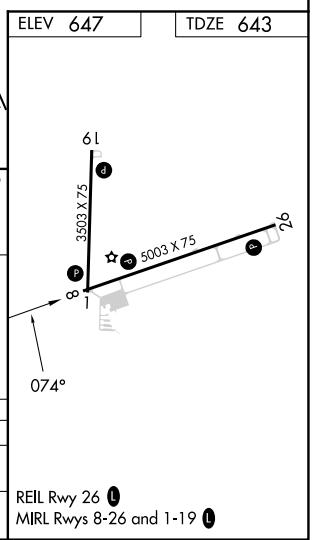
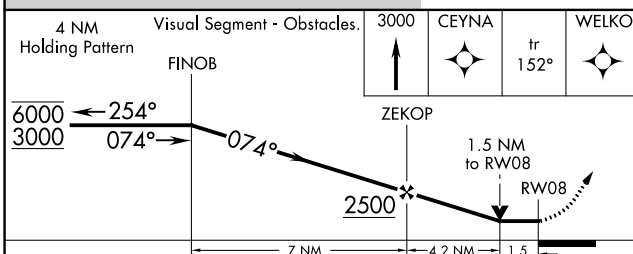
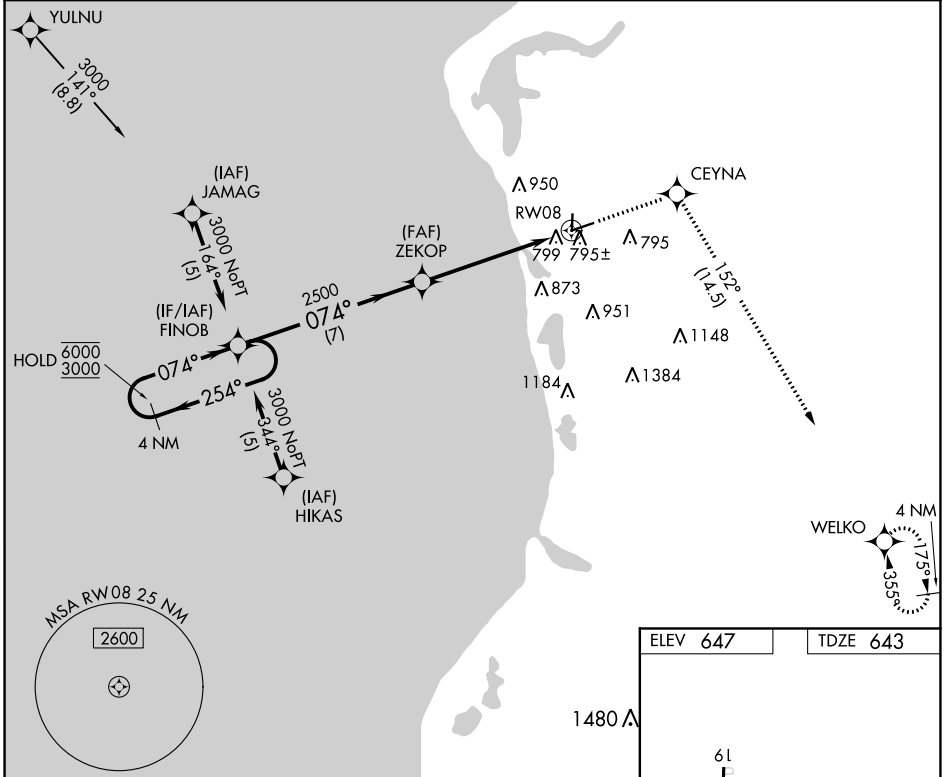
MASON COUNTY (LDM)

RNP APCH-GPS.

▼ Circling Rwy 1, 19 NA at night.
▲ Rwy 8 helicopter visibility reduction below ¾ SM NA.

MISSED APPROACH: Climb to 3000 direct CEYNA and on track 152° to WELKO and hold.

AWOS-3 119.925	MINNEAPOLIS CENTER 120.85 322.35	UNICOM 123.0 (CTAF) 0
--------------------------	--	---------------------------------



CATEGORY	A	B	C	D
LNVA MDA	1140-1	497 (500-1)	1140-1 3/8	497 (500-1 3/8)
CIRCLING	1160-1 513 (600-1)	1200-1 553 (600-1)	1260-1 3/4 613 (700-1 3/4)	1460-2 3/4 813 (900-2 3/4)

EC-1, 28 NOV 2024 to 26 DEC 2024

EC-1, 28 NOV 2024 to 26 DEC 2024