

LOC/DME I-PSG 110.5 Chan 42	APP CRS 164°	Rwy ldg TDZE Apt Elev 113	N/A N/A 113
---	------------------------	---	--

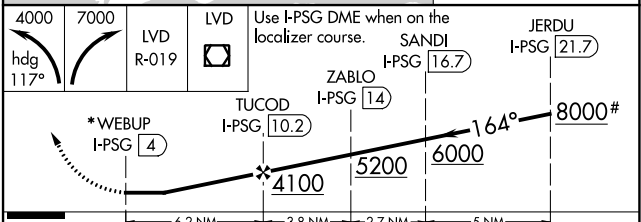
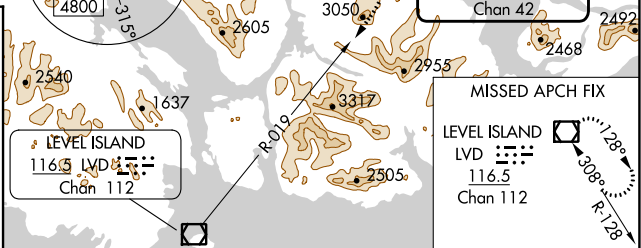
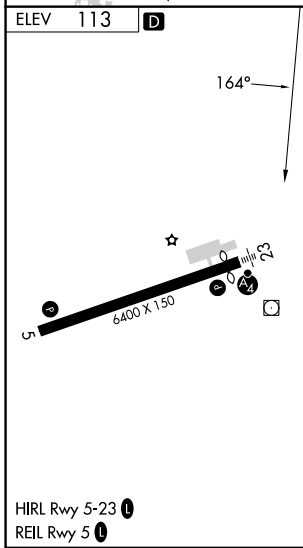
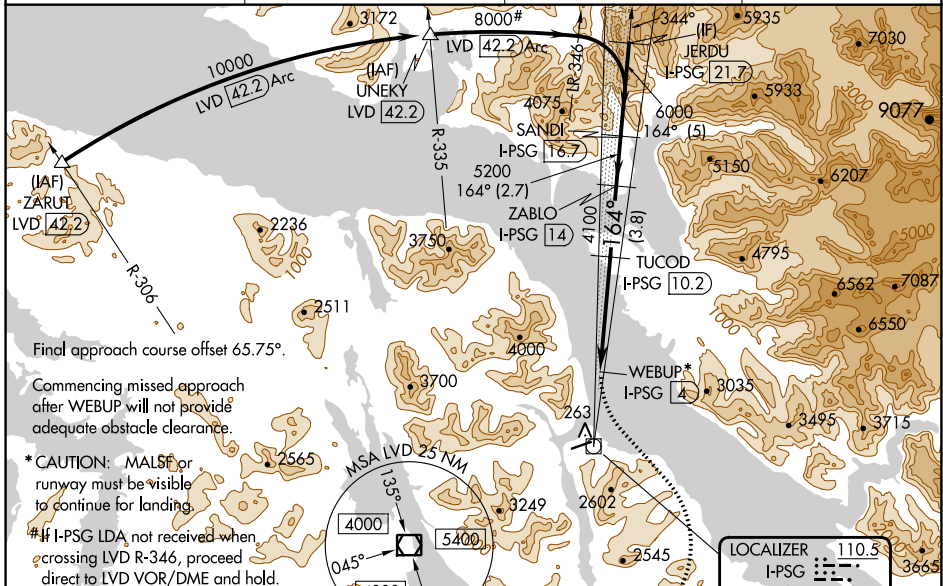
LDA-D
PETERSBURG JAMES A JOHNSON (PSG) (PAPG)

DME required.

V Circling NA southeast of Rwy 5-23. Inop table does not apply.
A Circling Rwy 5 NA at night. When local altimeter setting not received, use PSG/PAPG altimeter setting and increase all MDAs 80 feet.
38 -10°C

MISSED APPROACH: Climbing left turn to 4000 on heading 117° then climbing right turn to 7000 on LVD VOR/DME R-019 to LVD VOR/DME and hold, continue climb-in-hold to 7000.

AWOS-3P 125.8	ANCHORAGE CENTER 118.0	SITKA RADIO 122.35	CTAF 122.5
-------------------------	----------------------------------	------------------------------	----------------------



CATEGORY	A	B	C	D
C CIRCLING	1800-5 1687 (1700-5)	1880-5 1767 (1800-5)	3080-5 2967 (3000-5)	NA

AK, 31 OCT 2024 to 26 DEC 2024

AK, 31 OCT 2024 to 26 DEC 2024