

WAAS CH 49032 W14A	APP CRS 142°	Rwy Idg TDZE Apt Elev	4899 1132 1136
--	------------------------	-----------------------------	---

RNAV (GPS) RWY 14

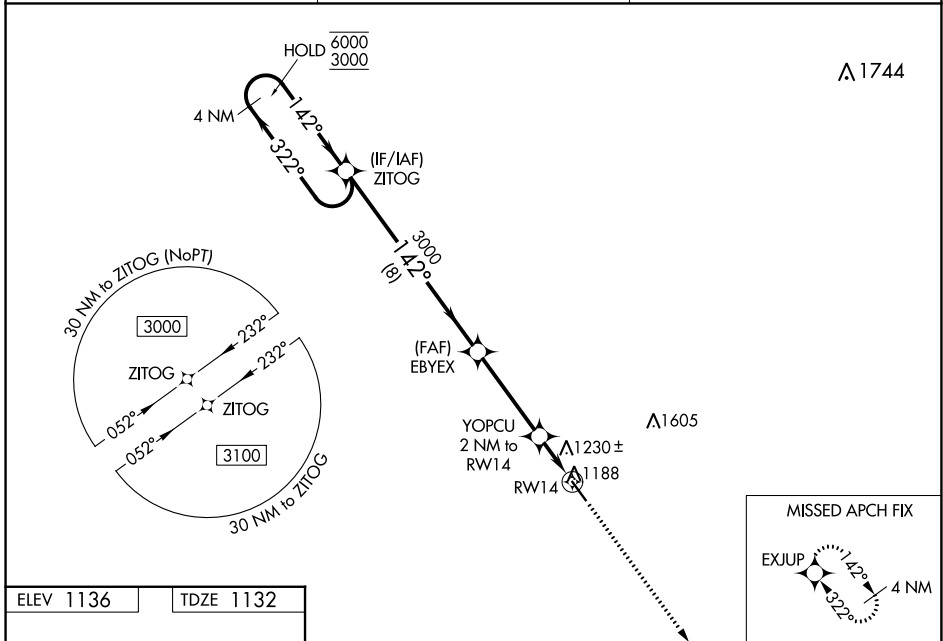
MORRIS MUNI/CHARLIE SCHMIDT FLD (MOX)

RNP APCH-GPS.

Baro-VNAV and VDP NA when using BBB altimeter setting. For uncompensated Baro-VNAV systems, LNAV/VNAV NA below -17°C or above 54°C. When local altimeter setting not received, use BBB altimeter setting and increase LPV and LNAV/VNAV DA to 1440 feet. Increase all MDAs 60 feet and visibility LNAV Cat C 1/8 SM and visibility Circling Cat C 1/4 SM.

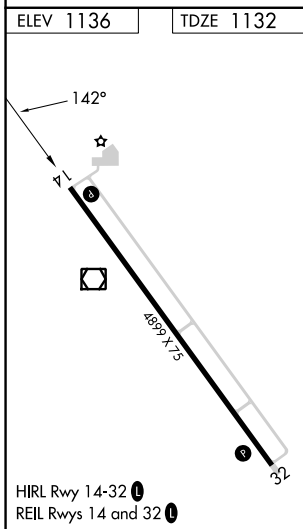
MISSED APPROACH: Climb to 3500 direct EXJUP and hold.

AWOS-3PT 118.6	MINNEAPOLIS CENTER 126.1 269.2	UNICOM 122.8 (CTAF) 0
--------------------------	--	---------------------------------



NC-1, 28 NOV 2024 to 26 DEC 2024

NC-1, 28 NOV 2024 to 26 DEC 2024



	ZITOG	EBEX	YOPCU	EXJUP
	4 NM Holding Pattern	3000	2 NM to RWY 14	3500
	6000 ← 322°	142° →	1800	4 NM
	3000	3000	1 NM to RWY 14	
	GP 3.00°			
	TCH 40			
	8 NM	3.8 NM	1 NM	1 NM
CATEGORY	A	B	C	D
LPV DA		1382-1 250 (300-1)		NA
LNAV/VNAV DA		1382-1 250 (300-1)		NA
LNAV MDA		1480-1 348 (400-1)		NA
<input checked="" type="checkbox"/> CIRCLING	1560-1 424 (500-1)	1600-1 464 (500-1)	1860-2 724 (800-2)	NA