

VOR/DME MOX <b>109.6</b> Chan <b>33</b>	APP CRS <b>144°</b>	Rwy Idg <b>4899</b> TDZE <b>1132</b> Apt Elev <b>1136</b>
---	------------------------	---

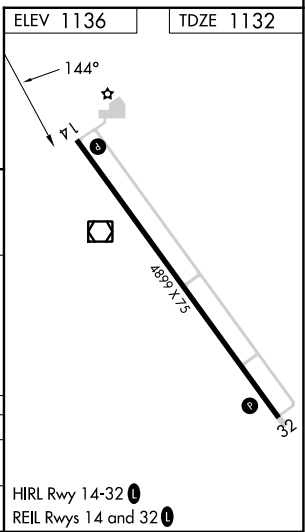
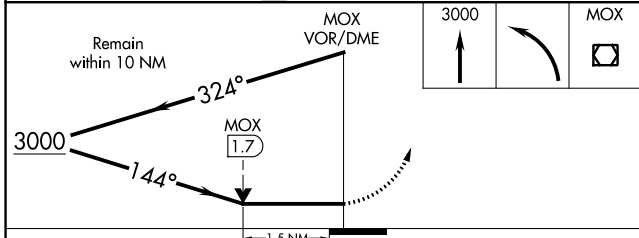
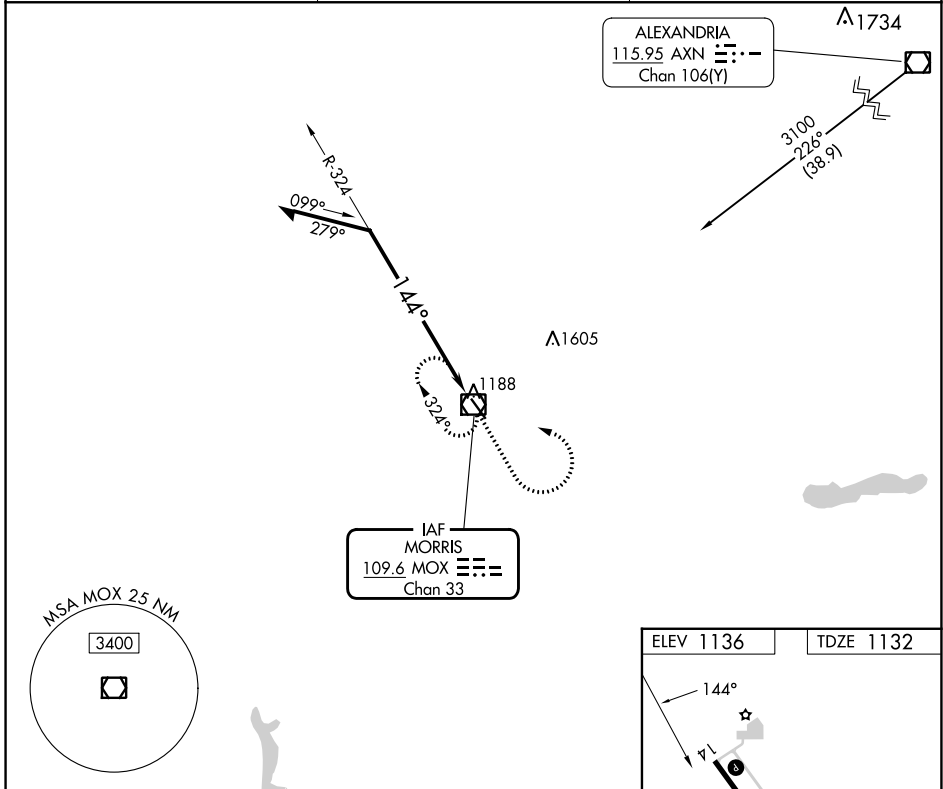
# VOR RWY 14

MORRIS MUNI/CHARLIE SCHMIDT FLD (MOX)

**▽** VDP NA when using BBB altimeter setting. When local altimeter setting not received, use BBB altimeter setting and increase all MDAs 60 feet and increase S-14 and Circling visibility Cat C ¼ SM.

**▲** NA MISSED APPROACH: Climb to 3000 then left turn direct MOX VOR/DME and hold.

AWOS-3PT <b>118.6</b>	MINNEAPOLIS CENTER <b>126.1 269.2</b>	UNICOM <b>122.8</b> (CTAF) <b>①</b>
--------------------------	--	--



CATEGORY	A	B	C	D
S-14	1640-1	508 (600-1)	1640-1 3/8 508 (600-1 3/8)	NA
<b>C</b> CIRCLING	1640-1	504 (600-1)	1860-2 724 (800-2)	NA

# VOR RWY 14

NC-1, 28 NOV 2024 to 26 DEC 2024

NC-1, 28 NOV 2024 to 26 DEC 2024