

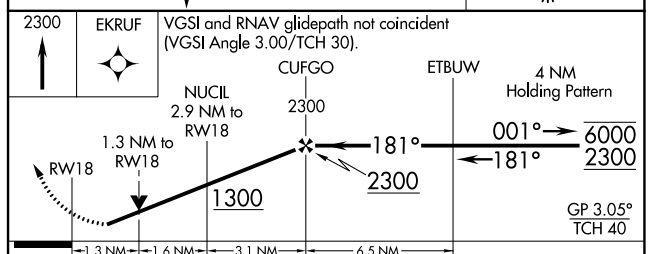
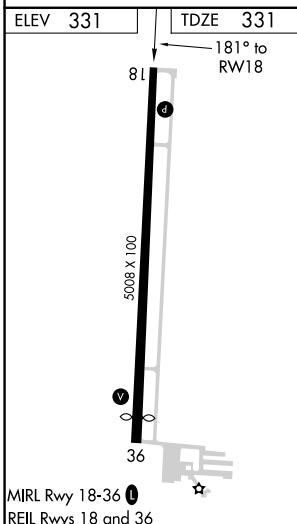
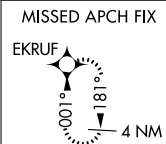
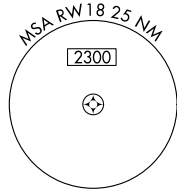
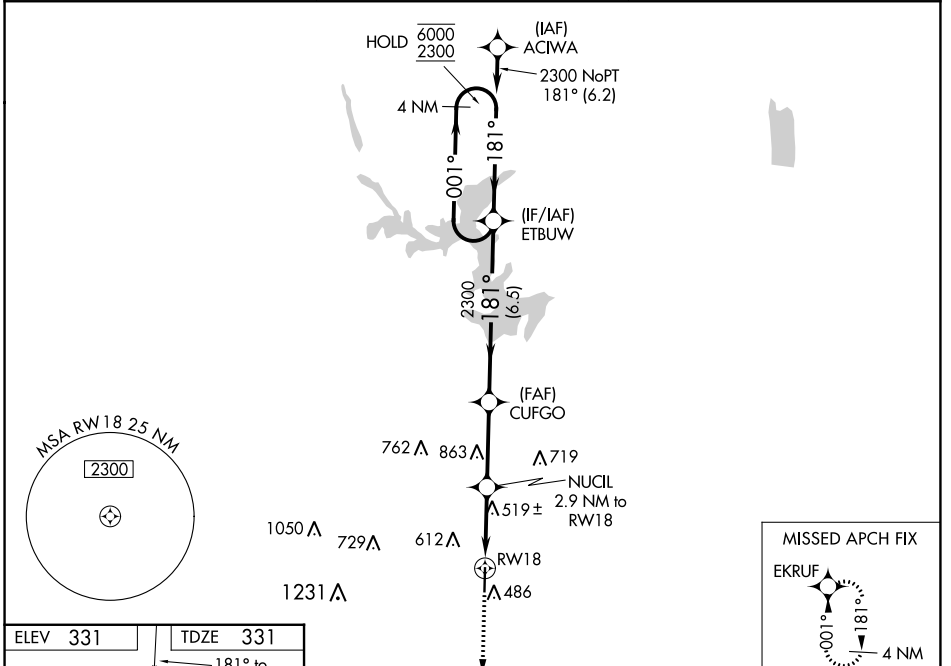
WAAS CH 97499	APP CRS 181°	Rwy Idg TDZE 5008 331
W18A		Apt Elev 331

RNAV (GPS) RWY 18

POPLAR BLUFF RGNL BUSINESS (POI^F)

RNP APCH-GPS.	MISSED APPROACH: Climb to 2300 direct EKRUF and hold.
<p>▼ Rwy 18 helicopter visibility reduction below ¾ SM NA. For uncompensated Baro-VNAV systems, LNAV/VNAV NA below -23°C or above 54°C.</p>	

ASOS 124.225	MEMPHIS CENTER 120.075 289.4	UNICOM 123.0 (CTAF) 0
------------------------	--	---------------------------------



CATEGORY	A	B	C	D
LPV DA		634-7/8	303 (400-7/8)	
LNAV/VNAV DA		675-1	344 (400-1)	
LNAV MDA	800-1	469 (500-1)	800-1 3/8	469 (500-1 3/8)
CIRCLING	840-1 509 (600-1)	920-1 589 (600-1)	920-1 1/2 589 (600-1 1/2)	980-2 649 (700-2)

NC-3, 28 NOV 2024 to 26 DEC 2024

NC-3, 28 NOV 2024 to 26 DEC 2024