

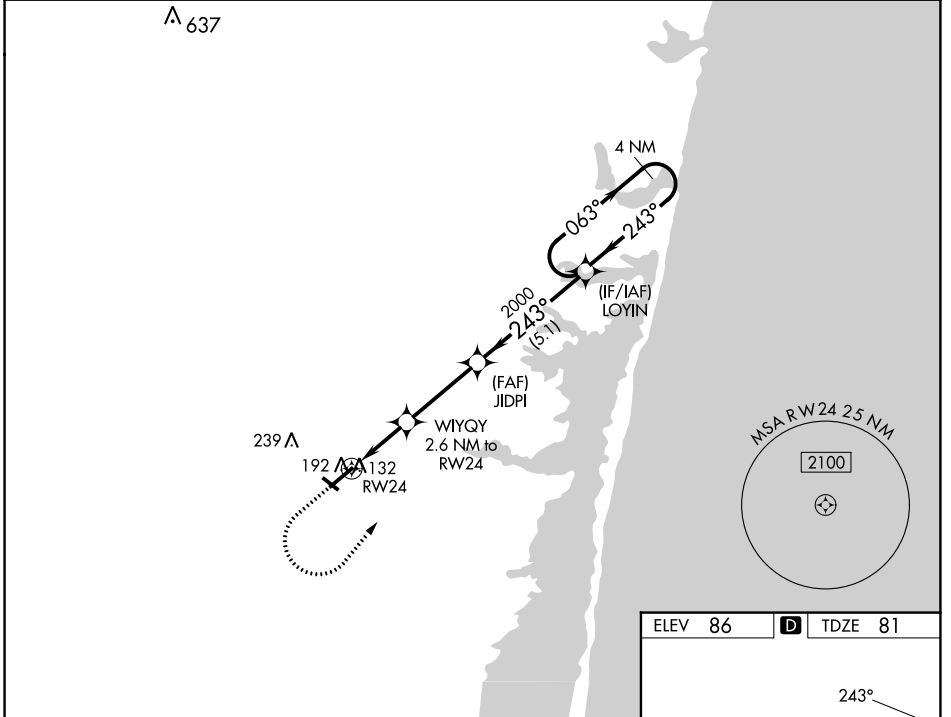
WAAS CH 86433 W24A	APP CRS 243°	Rwy Idg TDZE Apt Elev	5835 81 86
--	------------------------	-----------------------------	---------------------------------------

RNAV (GPS) RWY 24

OCEAN COUNTY (MJX)

RNP APCH - GPS.	MISSED APPROACH: Climb to 600 then climbing left turn to 2000 direct to LOYIN and hold.
-----------------	---

AWOS-3PT 119.875	MC GUIRE APP CON 126.475 363.8	UNICOM 122.7 (CTAF)
----------------------------	--	-------------------------------



600 2000 LOYIN VGSI and RNAV glidepath not coincident (VGSI Angle 3.00/TCH 55).

WYQY 2.6 NM to RW24

JIDPI 2000

LOYIN 4 NM Holding Pattern

1.1 NM to RW24

1.5 NM

3.3 NM

5.1 NM

940

2000

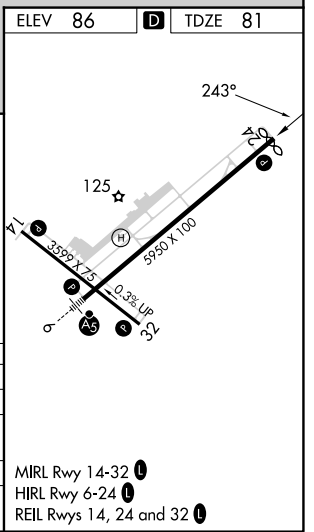
243°

063°

2000

GP 3.00° TCH 40

CATEGORY	A	B	C	D
LPV DA		331-3/4	250 (300-3/4)	
LNAV/VNAV DA		358-7/8	277 (300-7/8)	
LNAV MDA		460-1	379 (400-1)	
C CIRCLING	540-1 454 (500-1)	560-1 474 (500-1)	580-1 1/2 494 (500-1 1/2)	700-2 614 (700-2)



NE-2, 28 NOV 2024 to 26 DEC 2024

NE-2, 28 NOV 2024 to 26 DEC 2024