

WAAS CH 62823 W21A	APP CRS 206°	Rwy Idg 5502
		TDZE 315
		Apt Elev 315

RNAV (GPS) RWY 21

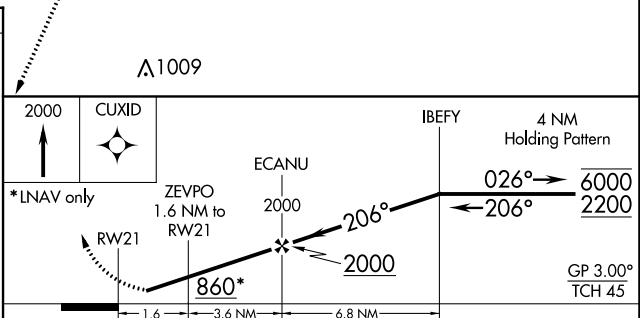
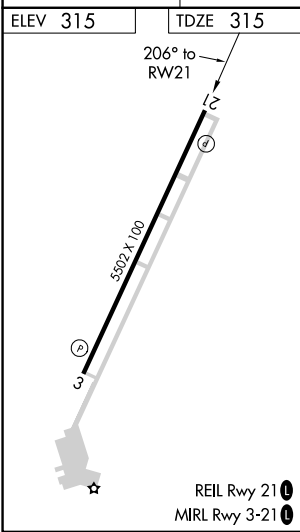
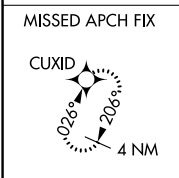
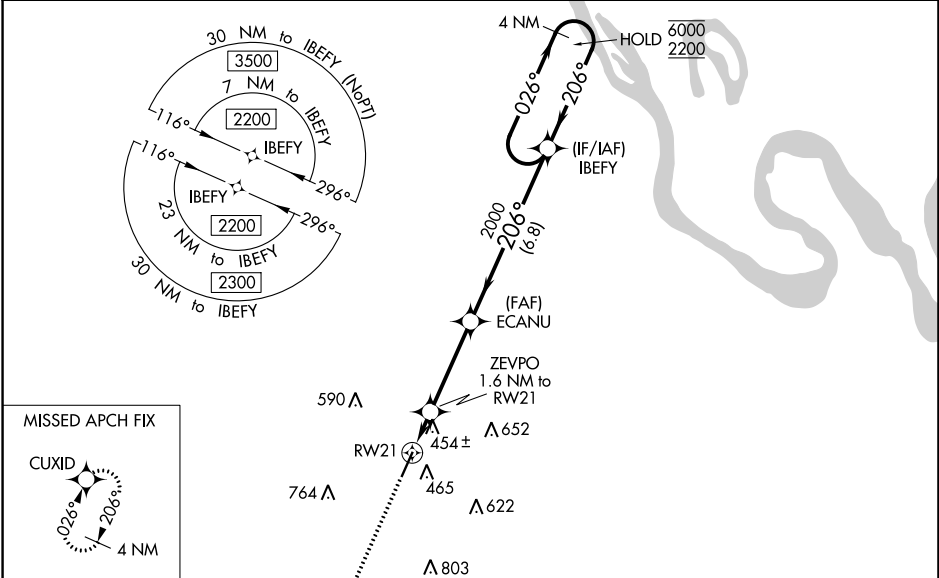
SIKESTON MEML MUNI (SIK)

RNP APCH.

▽ Rwy 21 helicopter visibility reduction below ¼ SM NA. Baro-VNAV NA when using Cape Girardeau altimeter setting. For uncompensated Baro-VNAV systems, LNAV/VNAV NA below -15°C or above 54°C. When local altimeter setting not received, use Cape Girardeau altimeter setting and increase all DA 49 feet and all MDA 60 feet. Increase LNAV and Circling Cat C/D visibility ¼ SM.

△NA MISSED APPROACH: Climb to 2000 direct CUXID and hold.

AWOS-3 119.175	MEMPHIS CENTER 133.65 292.15	UNICOM 122.8 (CTAF) 0
--------------------------	--	---------------------------------



CATEGORY	A	B	C	D
LPV DA	565-1 250 (300-1)			
LNAV/VNAV DA	761-1 ³ / ₈ 446 (500-1 ³ / ₈)			
LNAV MDA	720-1 405 (500-1)		720-1 ¹ / ₈ 405 (500-1 ¹ / ₈)	
<input checked="" type="checkbox"/> CIRCLING	840-1 525 (600-1)	860-1 545 (600-1)	1080-2 ¹ / ₄ 765 (800-2 ¹ / ₄)	1160-2 ³ / ₄ 845 (900-2 ³ / ₄)

NC-3, 28 NOV 2024 to 26 DEC 2024

NC-3, 28 NOV 2024 to 26 DEC 2024