

WAAS CH <b>58027</b> <b>W19A</b>	APP CRS <b>187°</b>	Rwy Idg TDZE Apt Elev	<b>4154</b> <b>2687</b> <b>2694</b>
--	------------------------	-----------------------------	---

# RNAV (GPS) RWY 19

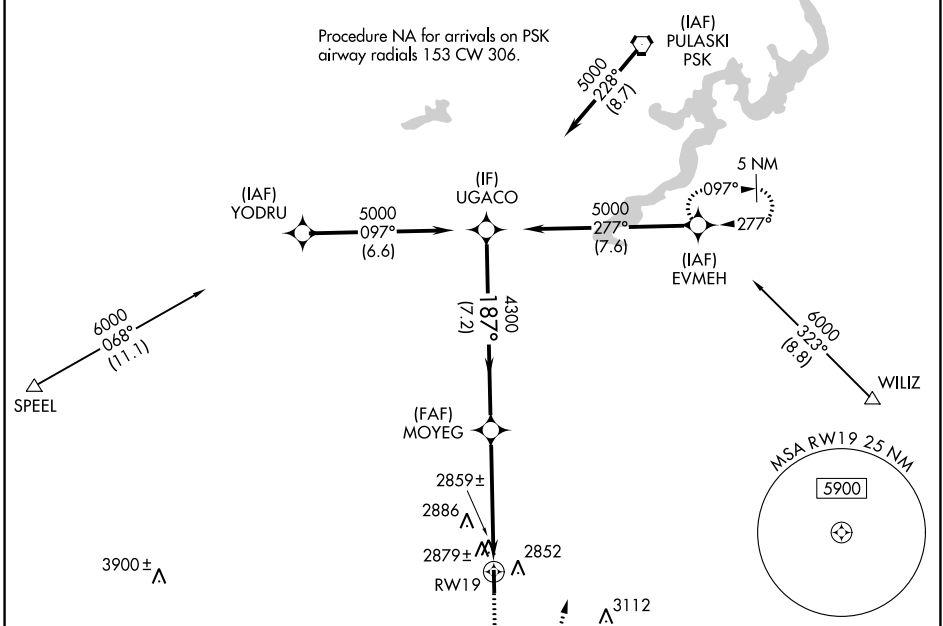
TWIN COUNTY (HLX)

RNP APCH - GPS.

▼ Rwy 19 helicopter visibility reduction below 3/4 SM NA. VDP NA with Dublin altimeter setting.  
 ▲ When local altimeter setting not received, use Dublin altimeter setting: increase all MDAs 140 feet and visibility LP Cats C and D 3/8 SM and Circling Cat C 1/4 SM and Cat D 1/2 SM.

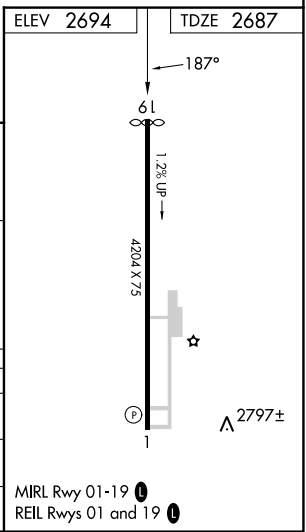
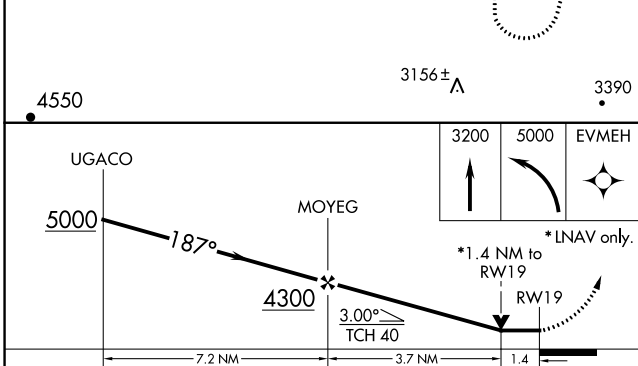
MISSED APPROACH: Climb to 3200 then climbing left turn to 5000 direct EVMEH and hold.

AWOS-3 <b>118.375</b>	ROANOKE APP CON <b>126.0 339.8</b>	UNICOM <b>122.8 (CTAF) 0</b>
--------------------------	---------------------------------------	---------------------------------



NE-3, 28 NOV 2024 to 26 DEC 2024

NE-3, 28 NOV 2024 to 26 DEC 2024



CATEGORY	A		B		C		D	
	MDA	3120-1	433 (500-1)	3120-1 3/8	433 (500-1 3/8)	3200-1 1/2	3440-2 1/2	746 (800-2 1/2)
LP	MDA	3120-1	433 (500-1)	3120-1 3/8	433 (500-1 3/8)	3200-1 1/2	3440-2 1/2	746 (800-2 1/2)
LNAV	MDA	3140-1	453 (500-1)	3140-1 3/8	453 (500-1 3/8)	3200-1 1/2	3440-2 1/2	746 (800-2 1/2)
CIRCLING		3200-1	506 (600-1)					