

VOR/DME AIR 117.1 Chan 118	APP CRS 274°	Rwy Idg 4003 TDZE 1312 Apt Elev 1312
--	------------------------	---

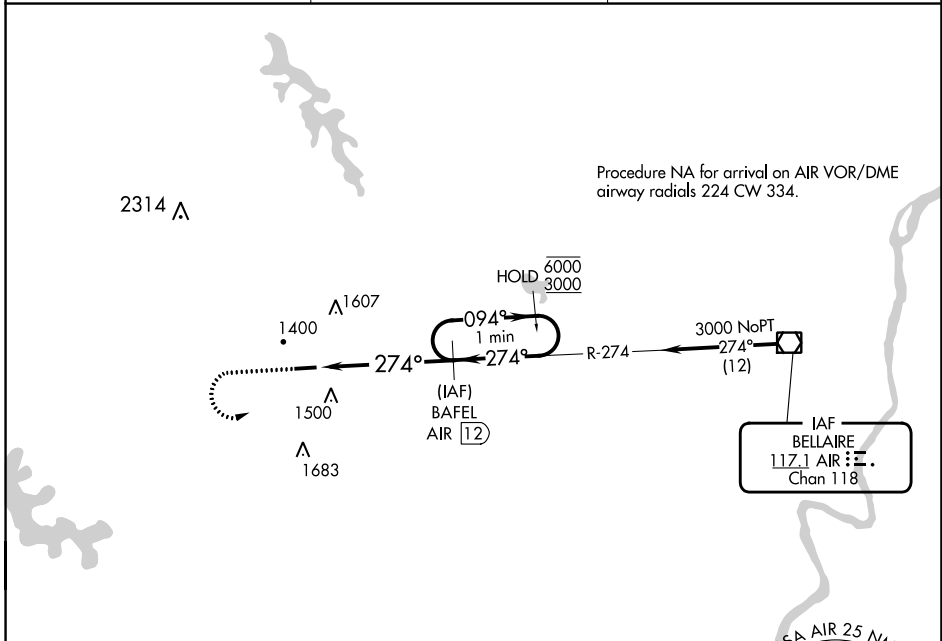
VOR/DME RWY 27

BARNESVILLE/BRADFIELD (6G5)

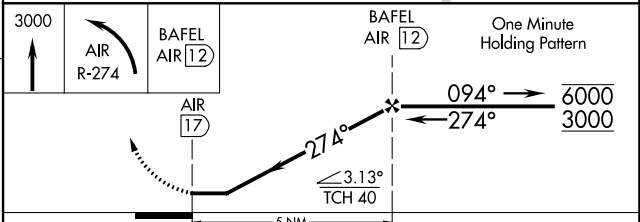
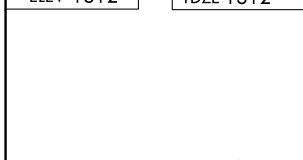
⚠ Rwy 27 helicopter visibility reduction below 1 SM NA.
⚠ Procedure NA at night. Use HLG altimeter setting, when not received, use AFJ altimeter setting and increase all MDAs 40 feet.

MISSED APPROACH: Climb to 3000, then left turn on AIR VOR/DME R-274 to BAFEL/AIR 12 DME and hold.

HLG ASOS 127.375	CLEVELAND CENTER 126.95 239.3	UNICOM 123.0 (CTAF) 📻
----------------------------	---	--



ELEV 1312	TDZE 1312
-----------	-----------



CATEGORY	A	B	C	D
S-27	1940-1	628 (700-1)	NA	
📻 CIRCLING	1940-1	628 (700-1)	NA	

MRL Rwy 9-27 **📻**
 REIL Rwy 27 **📻**

EC-2, 28 NOV 2024 to 26 DEC 2024

EC-2, 28 NOV 2024 to 26 DEC 2024