

WAA CH 82106 W12A	APP CRS 125°	Rwy Idg 7221 TDZE 1183 Apt Elev 1183
---------------------------------------	------------------------	---

RNAV (GPS) RWY 12
SOUTHWEST MINNESOTA RGNL MARSHALL/RYAN FLD (MML)

RNP APCH-GPS

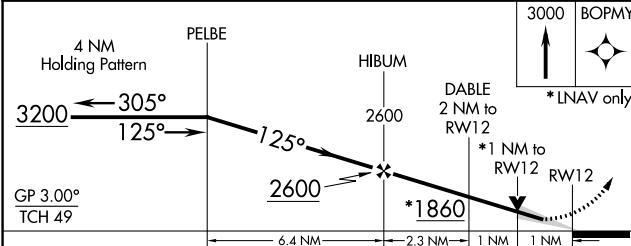
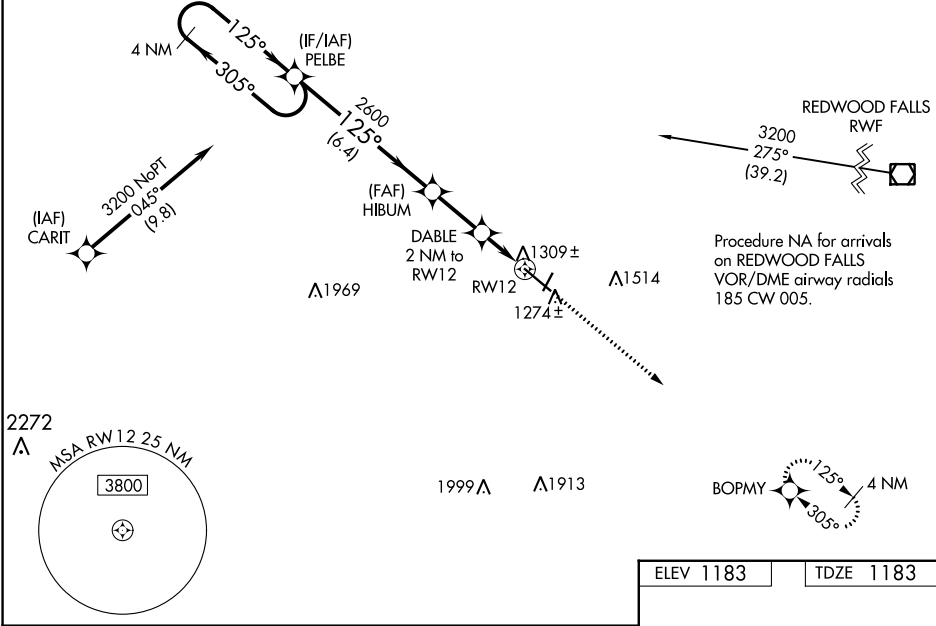
⚠ Baro-VNAV and VDP NA when using Tracy Muni altimeter setting. For uncompensated Baro-VNAV systems, LNAV/VNAV NA below -17°C or above 36°C. When local altimeter setting not received, use Tracy Muni altimeter setting and increase LPV DA to 1441 feet; LNAV/VNAV DA to 1548 and all Cats visibilities 1/8 SM; increase all MDA 60 feet, LNAV visibility Cat C/D 1/8 SM and Circling visibility Cat C/D 1/4 SM. For inop ALS, increase LNAV/VNAV all Cats visibility to 3/8 SM, and LNAV Cat C/D visibility to 1 SM. For inop ALS when using Tracy Muni altimeter setting, increase LNAV/VNAV all Cats visibility to 1 SM.

MALSRL

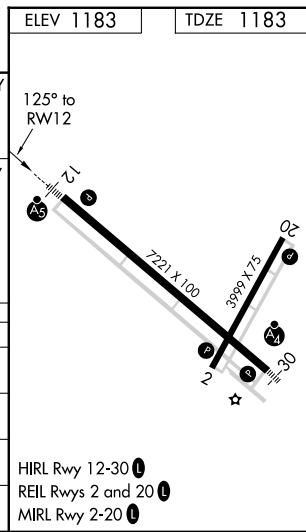


MISSED APPROACH:
Climb to 3000 direct BOPMY and hold.

AWOS-3PT 120.150	MINNEAPOLIS CENTER 127.1 290.2	GCO 121.725	UNICOM 122.8 (CTAF)
----------------------------	--	-----------------------	-------------------------------



CATEGORY	A	B	C	D
LPV DA		1383-1/2	200 (200-1/2)	
LNAV/VNAV DA		1490-1/2	307 (400-1/2)	
LNAV MDA	1560-1/2	377 (400-1/2)	1560-5/8	377 (400-5/8)
CIRCLING	1640-1	457 (500-1)	1820-1 3/4 637 (700-1 3/4)	1840-2 657 (700-2)



NC-1, 28 NOV 2024 to 26 DEC 2024

NC-1, 28 NOV 2024 to 26 DEC 2024