

VOR/DME MML 111.0 Chan 47	APP CRS 130°	Rwy Idg 7221 TDZE 1183 Apt Elev 1183
---	------------------------	---

VOR RWY 12

SOUTHWEST MINNESOTA RGNL MARSHALL/RYAN FLD (MML)

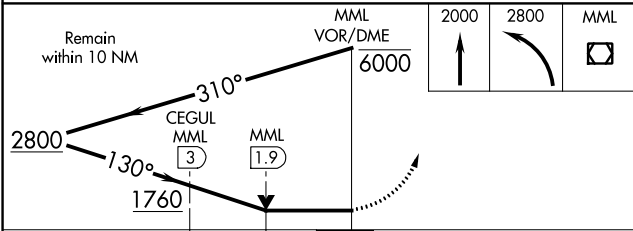
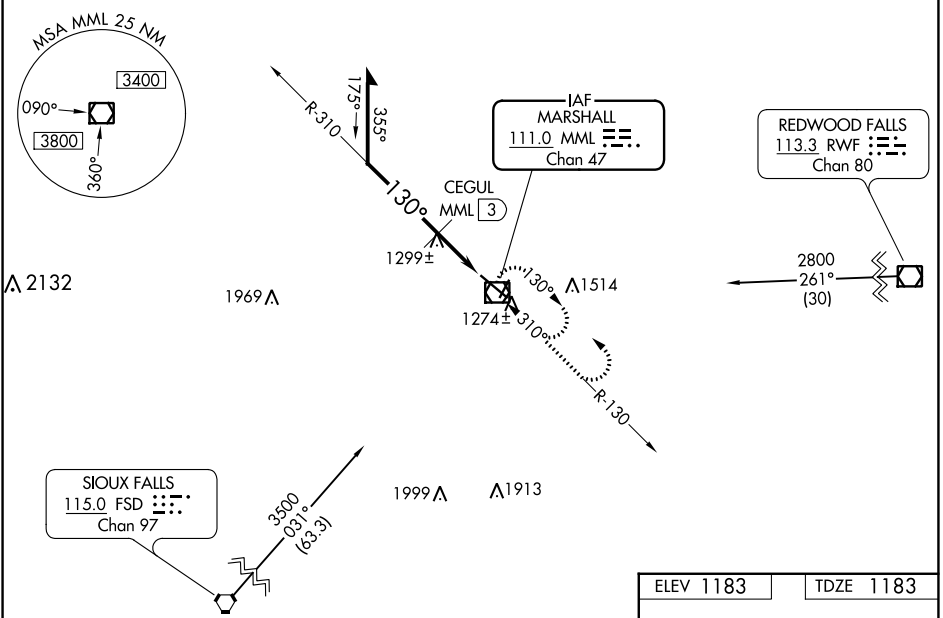
NA For inop ALS, increase S-12 Cat C/D visibilities to 1½ SM, CEGUL fix minimums: S-12 Cat C/D visibility to 1 SM. For inop ALS when using Tracy altimeter setting increase S-12 Cat C/D visibilities to 1¾ SM. When local altimeter setting not received, use Tracy Muni altimeter setting and increase all MDAs 60 feet, S-12 Cat C/D visibility ½; Circling Cat C/D visibility ¼ SM; CEGUL fix minimums: increase Circling C/D visibility ¼ SM. VDP NA when using Tracy Muni altimeter setting.

MALSR



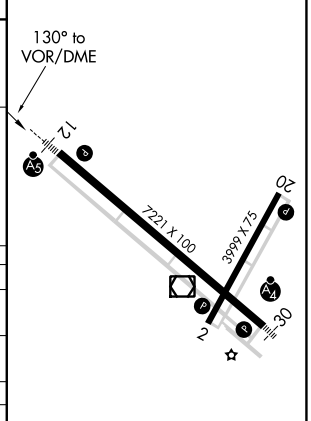
MISSED APPROACH: Climb to 2000, then climbing left turn to 2800 direct MML VOR/DME and hold.

AWOS-3PT 120.150	MINNEAPOLIS CENTER 127.1 290.2	GCO 121.725	UNICOM 122.8 (CTAF)
----------------------------	--	-----------------------	-------------------------------



ELEV 1183	TDZE 1183
-----------	-----------

CATEGORY	A	B	C	D
S-12	1760-½ 577 (600-½)		1760-¼ 577 (600-¼)	
CIRCLING	1760-1 577 (600-1)		1820-¾ 637 (700-¾)	1840-2 657 (700-2)
CEGUL FIX MINIMUMS				
S-12	1560-½ 377 (400-½)		1560-¾ 377 (400-¾)	
CIRCLING	1640-1 457 (500-1)		1820-¾ 637 (700-¾)	1840-2 657 (700-2)



HIRL Rwy 12-30
REIL Rws 2 and 20
MIRL Rwy 2-20

NC-1, 28 NOV 2024 to 26 DEC 2024

NC-1, 28 NOV 2024 to 26 DEC 2024