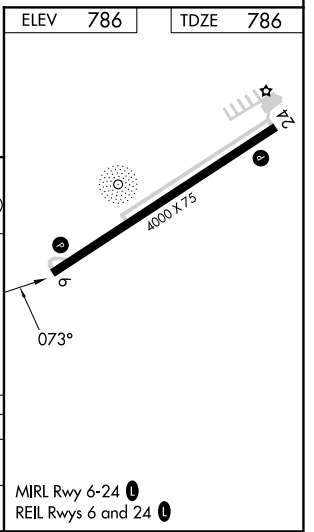
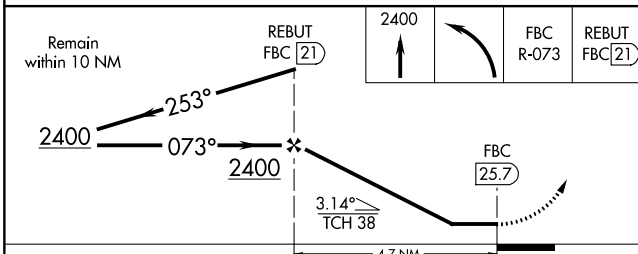
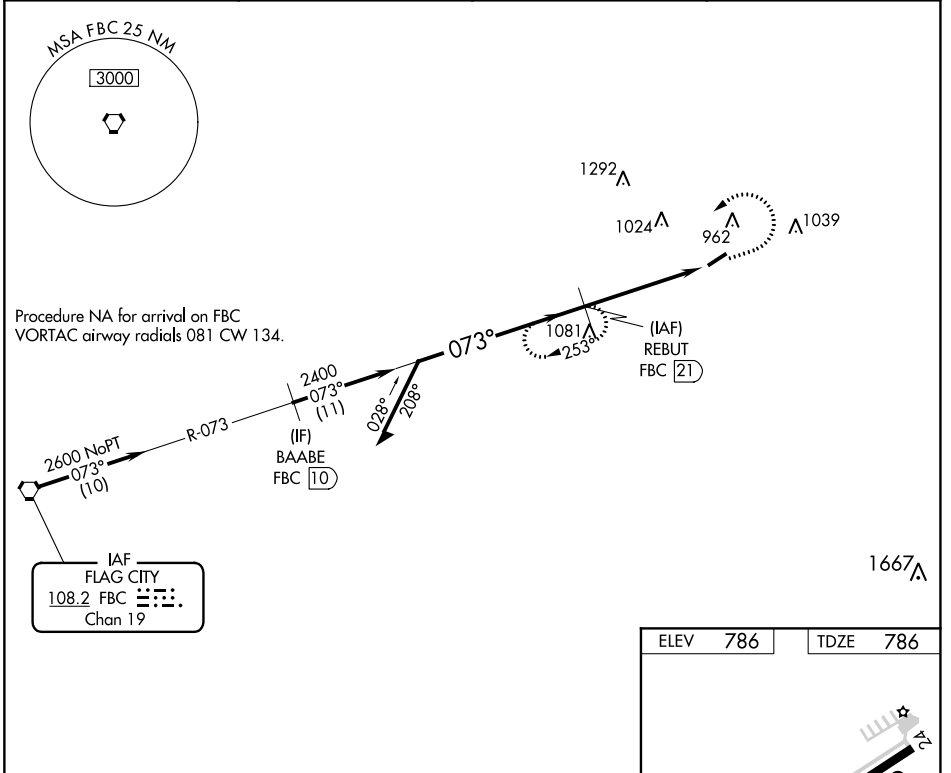


VORTAC FBC	APP CRS	Rwy Idg	4000
108.2	073°	TDZE	786
Chan 19		Apt Elev	786

# VOR RWY 6

SENECA COUNTY (16G)

DME required.		MISSED APPROACH: Climb to 2400 then left turn on FBC VORTAC R-073 to REBUT/FBC 21 DME and hold.	
<b>NA</b>	<p>Procedure NA for arrival on Rwy 24 NA at night. Rwy 6 helicopter reduction below 3/4 SM NA. When local altimeter not received, use Findlay altimeter setting and increase all MDA 60 feet and S-6 Cat C visibility 1/2 SM and Circling Cat C visibility 1/4 SM.</p>	AWOS-3 <b>127.175</b>	FDY ASOS <b>132.85</b>
		TOLEDO APP CON <b>120.8 317.55</b>	UNICOM <b>123.0</b> (CTAF) <b>0</b>



CATEGORY	A	B	C	D
S-6	1400-1	614 (700-1)	1400-1 3/4 614 (700-1 3/4)	NA
CIRCLING	1400-1 614 (700-1)	1400-1 1/4 614 (700-1 1/4)	1400-1 3/4 614 (700-1 3/4)	NA

EC-2, 28 NOV 2024 to 26 DEC 2024

EC-2, 28 NOV 2024 to 26 DEC 2024