

RNAV (GPS) RWY 18

NACOGDOCHES A L MANGHAM JR RGNL (OCH)

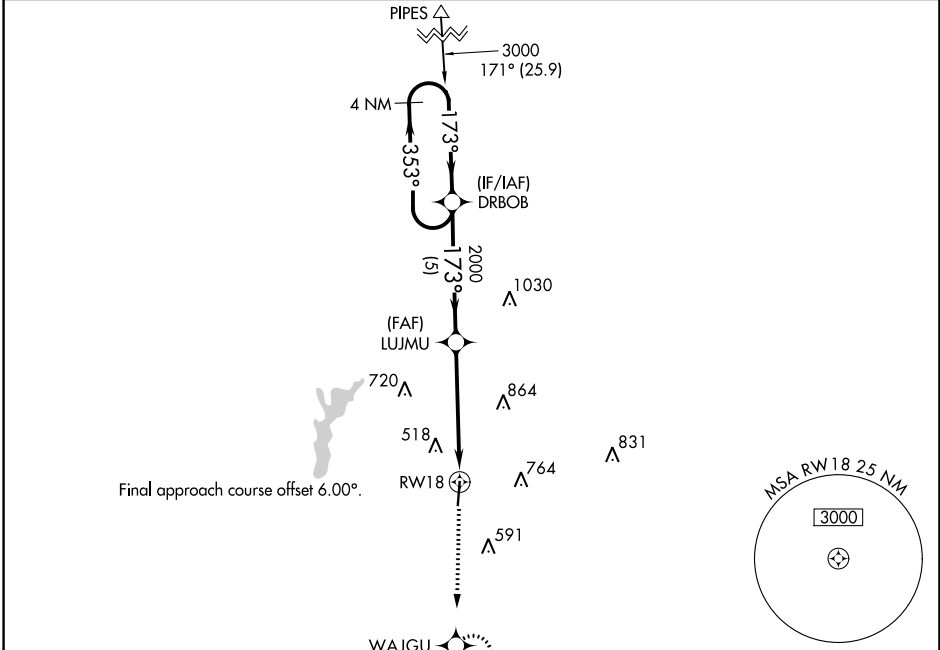
APP CRS	Rwy ldg	5000
173°	TDZE	343
	Apt Elev	343

RNP APCH-GPS.

⚠ Rwy 18 helicopter visibility reduction below 1 SM NA. When local altimeter setting not received, use Lufkin altimeter setting and increase all MDA 60 feet and visibility LNAV Cat C and Circling Cat C ¼ SM.

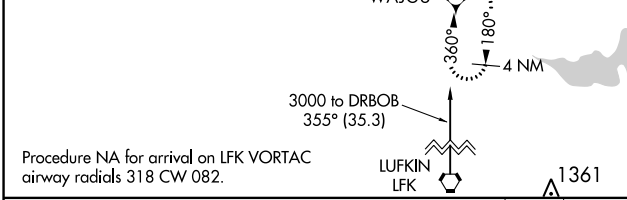
MISSED APPROACH: Climb to 2400 direct WAJGU and hold.

AWOS-3PT 135.625	HOUSTON CENTER 125.175 285.575	UNICOM 123.0(CTAF) 0
----------------------------	--	--------------------------------

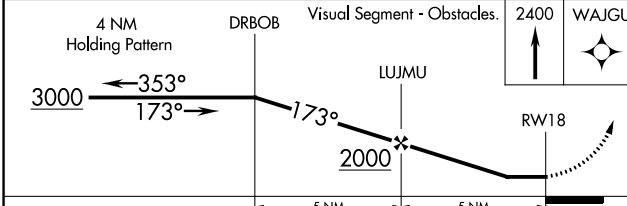
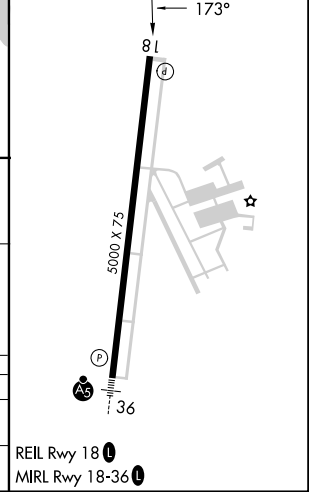


SC-5, 28 NOV 2024 to 26 DEC 2024

SC-5, 28 NOV 2024 to 26 DEC 2024



ELEV 343	TDZE 343
----------	----------



CATEGORY	A	B	C	D
LNAV MDA	980-1	637 (700-1)	980-1¾ 637 (700-1¾)	NA
CIRCLING	980-1	637 (700-1)	1080-2 737 (800-2)	NA

RNAV (GPS) RWY 18

REIL Rwy 18
MIRL Rwy 18-36