

WAAS CH <b>70716</b> <b>W24A</b>	APP CRS <b>240°</b>	Rwy Idg TDZE Apt Elev	<b>3898</b> <b>884</b> <b>887</b>
--	------------------------	-----------------------------	---

# RNAV (GPS) RWY 24

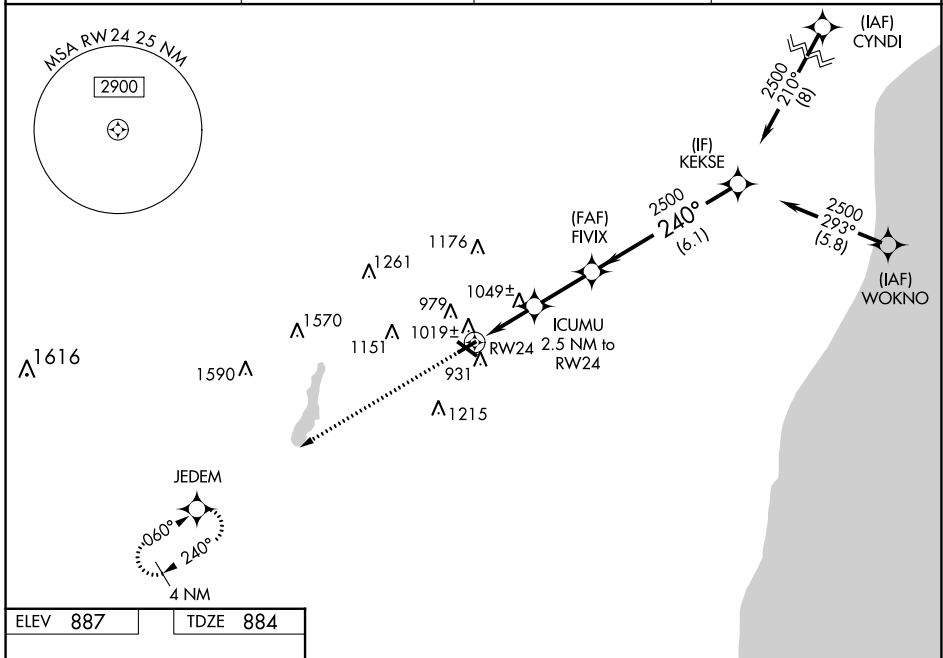
WEST BEND MUNI (E/TB)

RNP APCH - GPS.

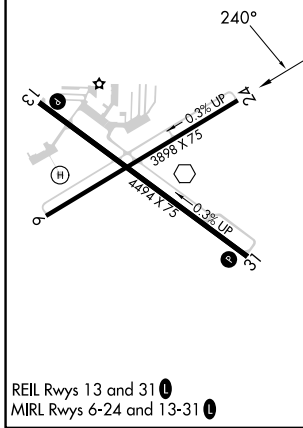
⚠ For uncompensated Baro-VNAV systems, LNAV/VNAV NA below -16°C or above 47°C. Rwy 24 helicopter visibility reduction below ½ SM NA. Baro-VNAV and VDP NA when using Lawrence J Timmerman altimeter setting. When local altimeter setting not received, use Milwaukee/Lawrence J Timmerman altimeter setting and increase LPV DA to 1260 feet; LNAV/VNAV DA to 1433 feet and all visibility ¼ SM; increase all MDA 80 feet and LNAV Cat C/D and Circling Cat C/D visibility ¼ SM.

MISSED APPROACH:  
Climb to 3000 direct JEDEM and hold.

AWOS-3 <b>120.0</b>	MILWAUKEE APP CON <b>125.35 307.0</b>	CLNC DEL <b>124.75</b>	UNICOM <b>123.05 (CTAF) 0</b>
------------------------	--	---------------------------	----------------------------------



ELEV <b>887</b>	TDZE <b>884</b>
-----------------	-----------------



3000	JEDEM	ICUMU 2.5 NM to RWY24	FVIX	KEKSE	Procedure Turn NA
↑	✧				
* LNAV only					
RWY24		* 1.2 NM to RWY24	* 1720	2500	2500
1.2 NM		1.3 NM	2.4 NM	6.1 NM	GP 3.00° TCH 45
CATEGORY	A	B	C	D	
LPV DA	1196-1		312 (400-1)		
LNAV/VNAV DA	1369-1¾		485 (500-1¾)		
LNAV MDA	1300-1	416 (500-1)	1300-1¼	416 (500-1¼)	
CIRCLING	1420-1 533 (600-1)	1520-1 633 (700-1)	1560-2 673 (700-2)	1560-2½ 673 (700-2½)	

EC-3, 28 NOV 2024 to 26 DEC 2024

EC-3, 28 NOV 2024 to 26 DEC 2024