

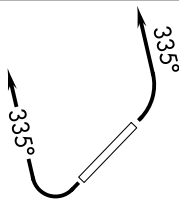
(BNYRD6.BNYRD) 19003

# BNYRD SIX DEPARTURE (RNAV)

AL-5651 (FAA)

SCOTTSDALE (SDL)  
SCOTTSDALE, ARIZONA

ATIS ★  
 118.6  
 CLNC DEL  
 124.8  
 GND CON  
 121.6  
 SCOTTSDALE TOWER ★  
 119.9  
 PHOENIX DEP CON  
 120.7 239.0

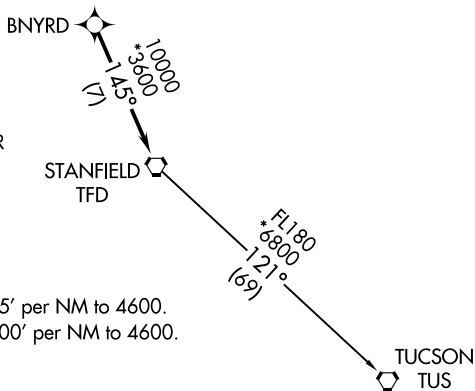


**TOP ALTITUDE:  
ASSIGNED BY ATC**

SW-4, 28 NOV 2024 to 26 DEC 2024

SW-4, 28 NOV 2024 to 26 DEC 2024

- NOTE: RNAV 1.
- NOTE: Turbojets and turboprops only.
- NOTE: RADAR required.
- NOTE: GPS required.
- NOTE: Aircraft departing KGEU and KGYR ATC assigned only.
- NOTE: Rwy 21: Do not exceed 210K until established on assigned heading.



### TAKEOFF MINIMUMS

Rwy 3: Standard with minimum climb of 445' per NM to 4600.  
 Rwy 21: Standard with minimum climb of 300' per NM to 4600.

NOTE: Chart not to scale.



### DEPARTURE ROUTE DESCRIPTION

TAKEOFF RUNWAY 3: Climbing left turn heading 335° or as assigned by ATC, thence. . . .

TAKEOFF RUNWAY 21: Climbing right turn heading 335° or as assigned by ATC, thence. . . .

. . . expect RADAR vectors to BNYRD, then on track 145° to TFD VORTAC, then on (transition), maintain ATC assigned altitude, expect filed altitude 3 minutes after departure.

TUCSON TRANSITION (BNYRD6.TUS)

# BNYRD SIX DEPARTURE (RNAV)

(BNYRD6.BNYRD) 24MAY18

SCOTTSDALE, ARIZONA  
SCOTTSDALE (SDL)