

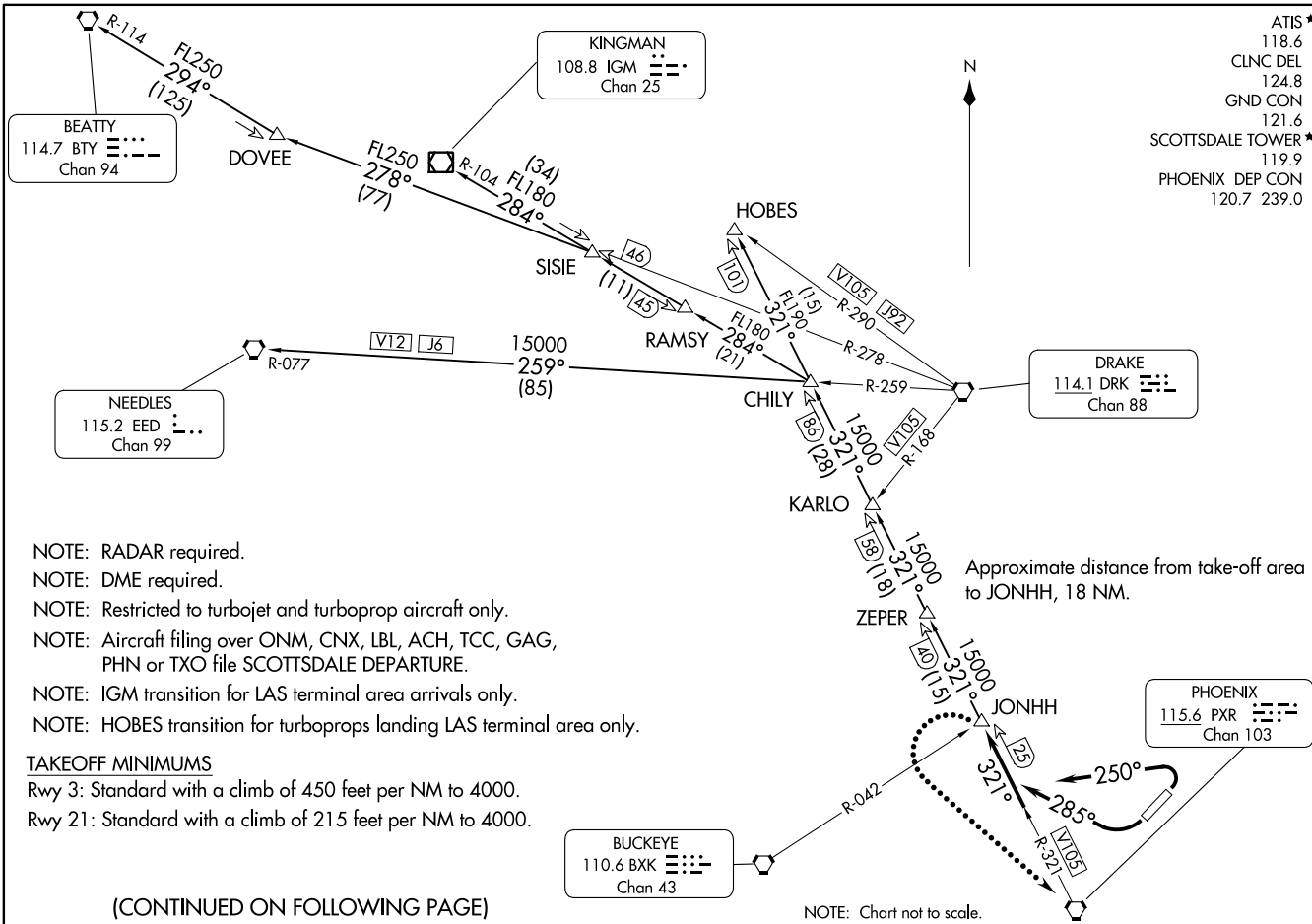
JONHH TWO DEPARTURE  
(JONHH2.JONHH) 20JUN19

(JONHH2.JONHH) 23334  
JONHH TWO DEPARTURE

AL-5651 (FAA)

SCOTTSDALE (SDI)  
SCOTTSDALE, ARIZONA

- ATIS\* 118.6
- CLNC DEL 124.8
- GND CON 121.6
- SCOTTSDALE TOWER\* 119.9
- PHOENIX DEP CON 120.7 239.0



- NOTE: RADAR required.
- NOTE: DME required.
- NOTE: Restricted to turbojet and turboprop aircraft only.
- NOTE: Aircraft filing over ONM, CNX, LBL, ACH, TCC, GAG, PHN or TXO file SCOTTSDALE DEPARTURE.
- NOTE: IGM transition for LAS terminal area arrivals only.
- NOTE: HOBES transition for turboprops landing LAS terminal area only.

**TAKEOFF MINIMUMS**

- Rwy 3: Standard with a climb of 450 feet per NM to 4000.
- Rwy 21: Standard with a climb of 215 feet per NM to 4000.

(CONTINUED ON FOLLOWING PAGE)

NOTE: Chart not to scale.

SCOTTSDALE, ARIZONA  
SCOTTSDALE (SDI)



DEPARTURE ROUTE DESCRIPTION

TAKEOFF RUNWAY 3: Climbing left turn heading 250° to intercept and proceed on PXR R-321 to JONHH INT. Thence. . . .

TAKEOFF RUNWAY 21: Climbing right turn heading 285° to intercept and proceed on PXR R-321 to JONHH INT. Thence. . . .

. . . .on assigned transition.

LOST COMMUNICATIONS: If not in contact with departure control at JONHH INT, turn left direct to PXR VORTAC, thence via assigned transition. Expect filed altitude 3 minutes after departure.

BEATTY TRANSITION (JONHH2.BTY): From over JONHH INT on PXR R-321 to CHILY INT, then on IGM R-104 to SISIE INT, then on DRK R-278 to DOVEE INT, then on BTY R-114 to BTY VORTAC.

HOBES TRANSITION (JONHH2.HOBES): From over JONHH INT on PXR R-321 to HOBES INT.

KINGMAN TRANSITION (JONHH2.IGM): From over JONHH INT on PXR R-321 to CHILY INT, then on IGM R-104 to IGM VOR/DME.

NEEDLES TRANSITION (JONHH2.EED): From over JONHH INT on PXR R-321 to CHILY INT, then on DRK R-259 and EED R-077 to EED VORTAC.

SW-4, 28 NOV 2024 to 26 DEC 2024

SW-4, 28 NOV 2024 to 26 DEC 2024