

APP CRS	Rwy Idg	N/A
109°	TDZE	N/A
	Apt Elev	1510

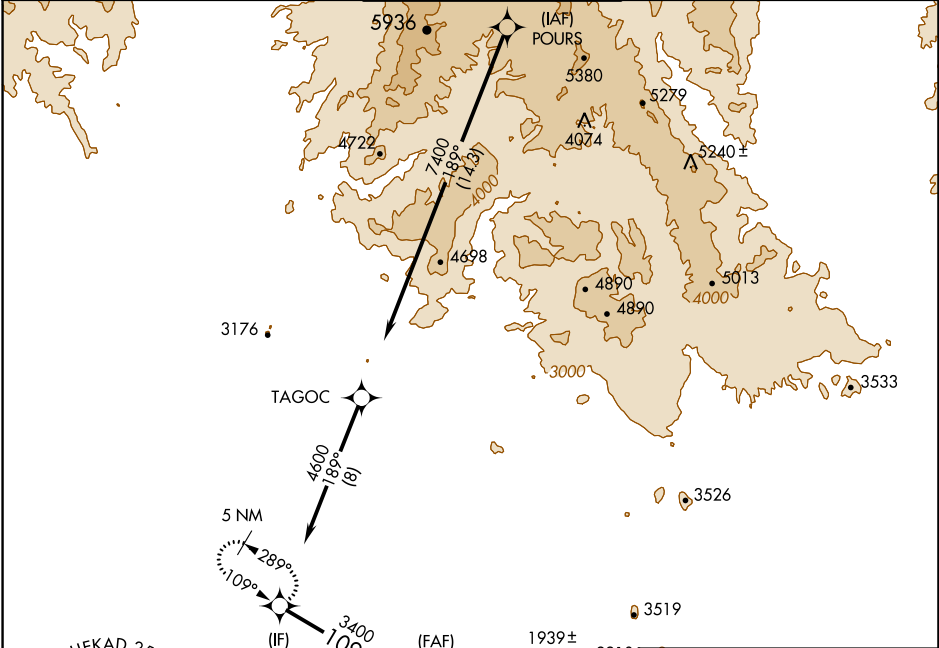
RNAV (GPS)-D

SCOTTSDALE (SDL)

▼ When VGSI inoperative, circling Rwy 21 NA at night. When local altimeter setting not received, use Phoenix Sky Harbor Intl altimeter setting and increase all MDA 100 feet and increase visibility Cat C ¼ SM. DME/DME RNP-0.3 NA.

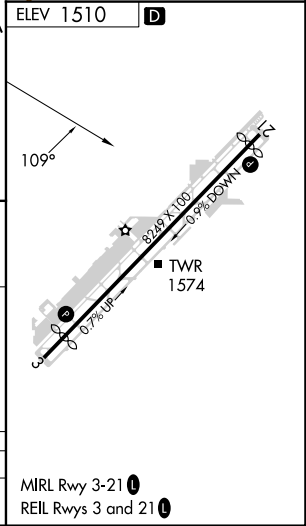
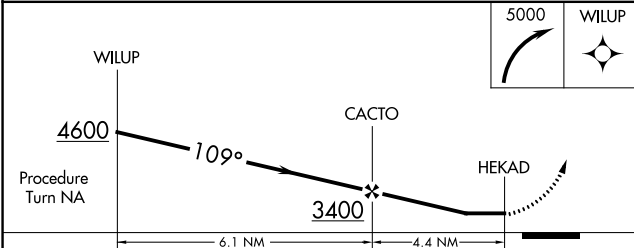
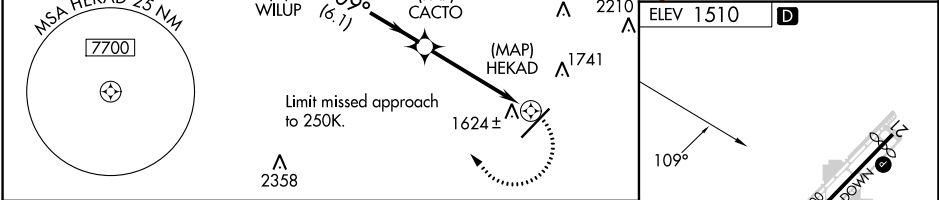
MISSED APPROACH: Climbing right turn to 5000 direct WILUP and hold, continue climb-in-hold to 5000.

ATIS ★ 118.6	PHOENIX APP CON 120.7 239.0	SCOTTSDALE TOWER ★ 119.9 (CTAF) 0	GND CON 121.6	CLNC DEL 124.8
------------------------	---------------------------------------	---	-------------------------	--------------------------



SW-4, 28 NOV 2024 to 26 DEC 2024

SW-4, 28 NOV 2024 to 26 DEC 2024



CATEGORY	A	B	C	D
CIRCLING	2080-1 570 (600-1)	2100-1 590 (600-1)	2460-2¾ 950 (1000-2¾)	3300-3 1790 (1800-3)