

APP CRS	Rwy Idg	<b>7110</b>
<b>032°</b>	TDZE	<b>1470</b>
	Apt Elev	<b>1510</b>

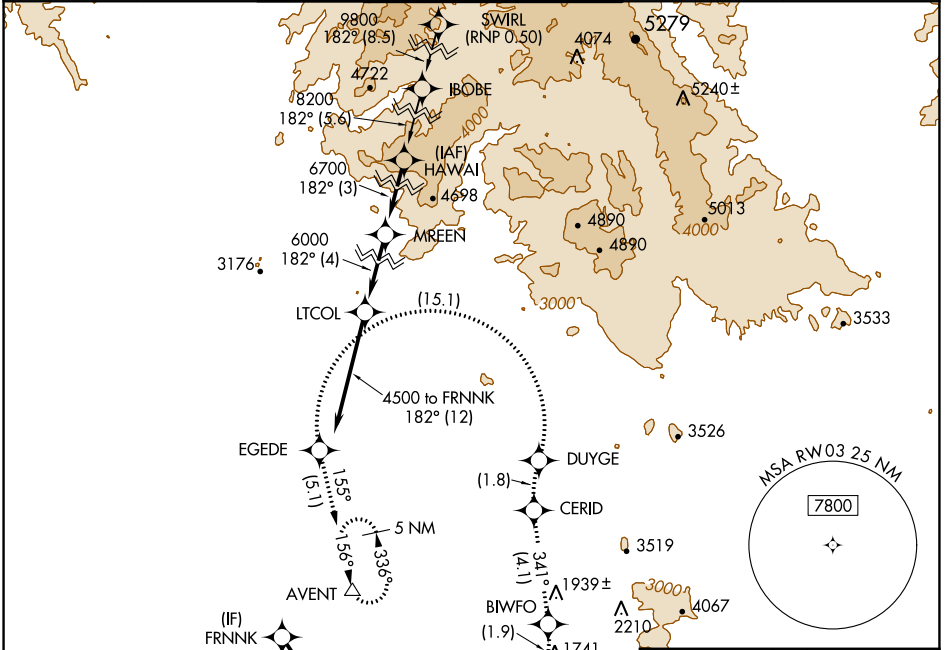
# RNAV (RNP) Y RWY 3

SCOTTSDALE (SDL)

**⚠** RF and GPS required. Visibility reduction by helicopters NA. For uncompensated Baro-VNAV systems, procedure NA below 1°C (31°F) or above 54°C (130°F). When local altimeter setting not received procedure NA. Missed approach requires RNP less than 1.0.

**MISSED APPROACH:** Climb to 5000 via left turn to AFXUR, and via left turn to BIWFO, and via track 341° to CERID, and via right turn to DUYGE, and via left turn to EGEDE, and via track 155° to AVENT and hold.

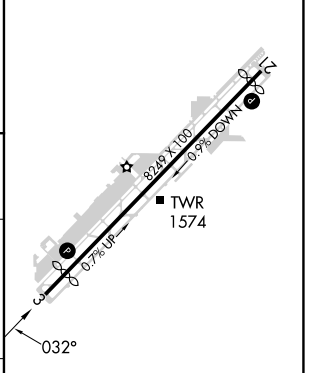
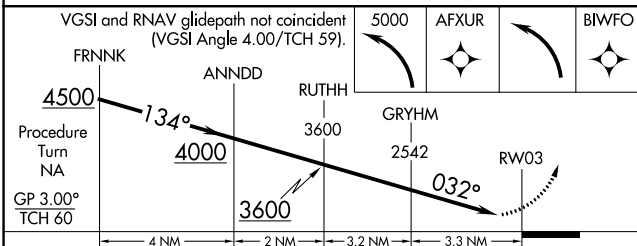
ATIS ★	PHOENIX APP CON	SCOTTSDALE TOWER ★	GND CON	CLNC DEL
<b>118.6</b>	<b>120.7 239.0</b>	<b>119.9 (CTAF) 0</b>	<b>121.6</b>	<b>124.8</b>



SW-4, 28 NOV 2024 to 26 DEC 2024

SW-4, 28 NOV 2024 to 26 DEC 2024

ELEV 1510	<b>D</b> TDZE 1470
-----------	--------------------



FRNKNK	ANNDD	RUTHH	GRYHM	RWY03
4500	4000	3600	2542	
Procedure Turn NA				
GP 3.00°				
TCH 60				
4 NM	2 NM	3.2 NM	3.3 NM	
CATEGORY	A	B	C	D
RNP 0.30 DA	1829-1¼	359 (400-1¼)		NA

**AUTHORIZATION REQUIRED**

MIRL Rwy 3-21 **0**  
REIL Rwy 3 and 21 **0**