

APP CRS	Rwy Idg	7110
032°	TDZE	1470
	Apt Elev	1510

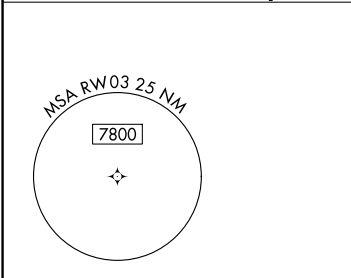
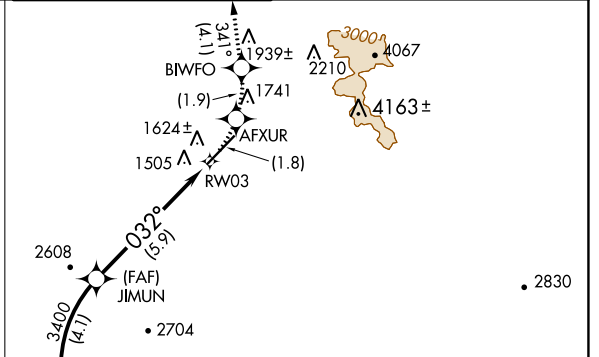
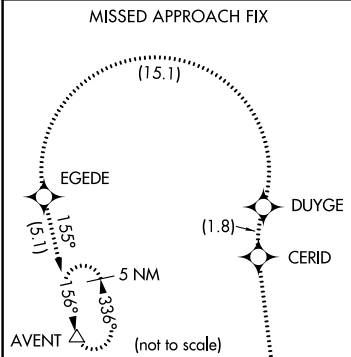
RNAV (RNP) Z RWY 3

SCOTTSDALE (SDL)

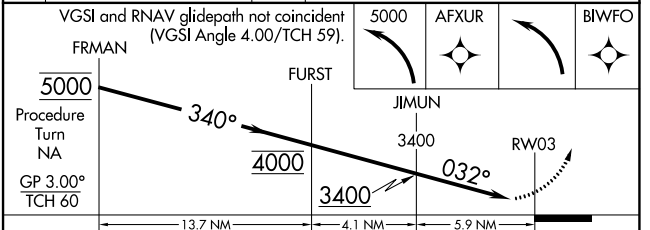
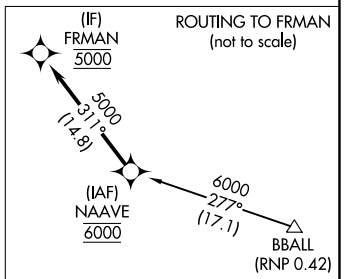
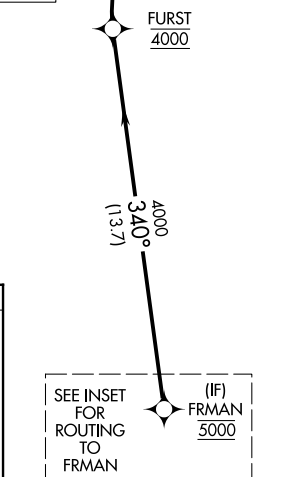
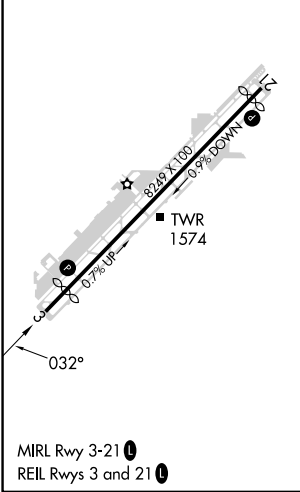
RF and GPS required. Visibility reduction by helicopters NA.
 For uncompensated Baro-VNAV systems, procedure NA below 1°C (31°F) or above 54°C (130°F). When local altimeter setting not received procedure NA. Missed approach requires RNP less than 1.0.

MISSED APPROACH: Climb to 5000 via left turn to AFXUR, and via left turn to BIWFO, and via track 341° to CERID, and via right turn to DUYGE, and via left turn to EGEDE, and via track 155° to AVENT and hold.

ATIS ★ 118.6	PHOENIX APP CON 120.7 239.0	SCOTTSDALE TOWER ★ 119.9 (CTAF) 0	GND CON 121.6	CLNC DEL 124.8
------------------------	---------------------------------------	---	-------------------------	--------------------------



ELEV 1510	D	TDZE 1470
-----------	----------	-----------



CATEGORY	A	B	C	D
RNP 0.30 DA	1829-1¼		359 (400-1¼)	NA

AUTHORIZATION REQUIRED

SW-4, 28 NOV 2024 to 26 DEC 2024

SW-4, 28 NOV 2024 to 26 DEC 2024