

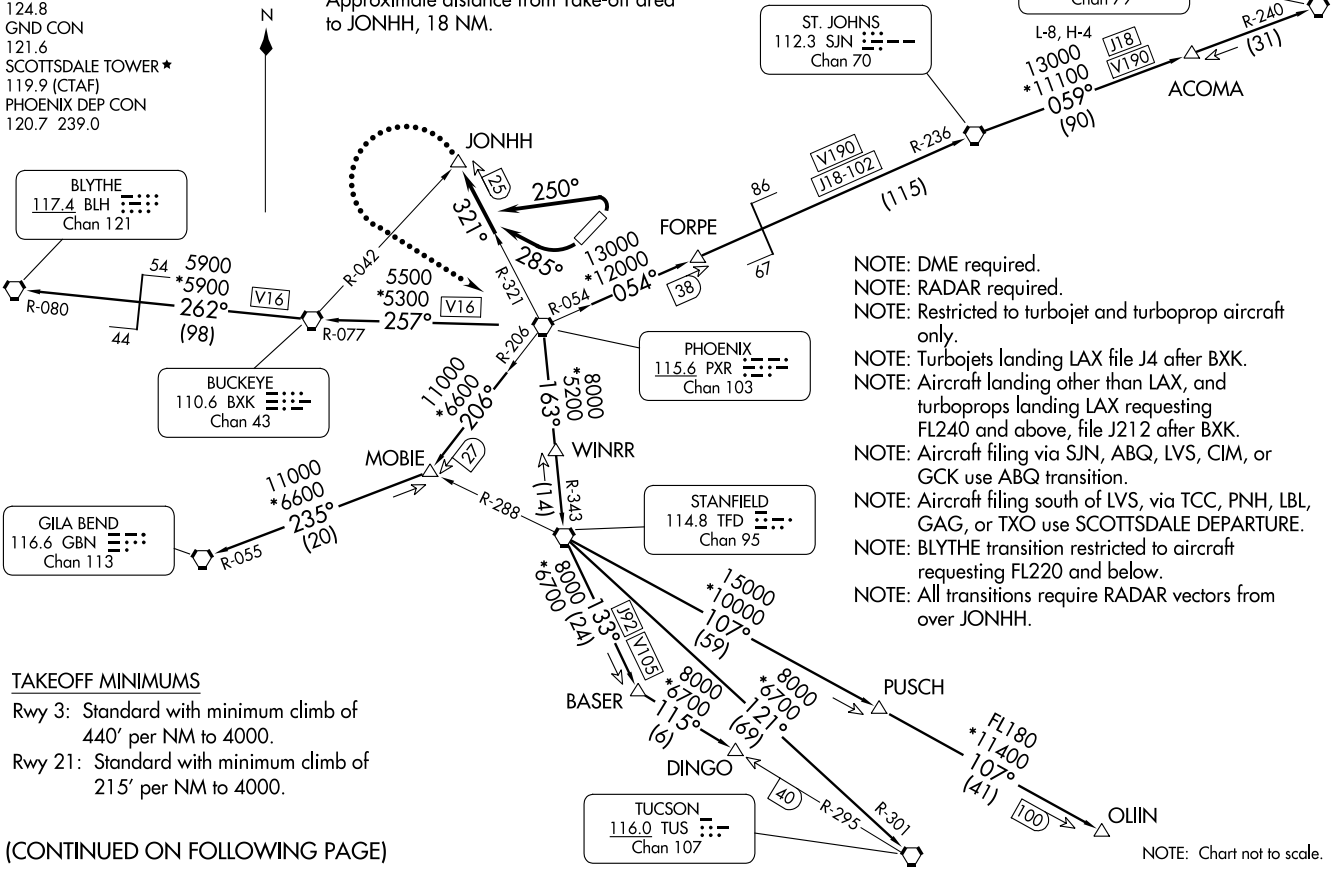
ATIS ★
 118.6
 CLINC DEL
 124.8
 GND CON
 121.6
 SCOTTSDALE TOWER ★
 119.9 (CTAF)
 PHOENIX DEP CON
 120.7 239.0

BLYTHE
 117.4 BLH
 Chan 121

BUCKEYE
 110.6 BXK
 Chan 43

GILA BEND
 116.6 GBN
 Chan 113

Approximate distance from Take-off area
 to JONHH, 18 NM.



TAKEOFF MINIMUMS
 Rwy 3: Standard with minimum climb of
 440' per NM to 4000.
 Rwy 21: Standard with minimum climb of
 215' per NM to 4000.

(CONTINUED ON FOLLOWING PAGE)

NOTE: DME required.
 NOTE: RADAR required.
 NOTE: Restricted to turbojet and turboprop aircraft only.
 NOTE: Turbojets landing LAX file J4 after BXK.
 NOTE: Aircraft landing other than LAX, and turboprops landing LAX requesting FL240 and above, file J212 after BXK.
 NOTE: Aircraft filing via SJN, ABQ, LVS, CIM, or GCK use ABQ transition.
 NOTE: Aircraft filing south of LVS, via TCC, PNH, LBL, GAG, or TXO use SCOTTSDALE DEPARTURE.
 NOTE: BLYTHE transition restricted to aircraft requesting FL220 and below.
 NOTE: All transitions require RADAR vectors from over JONHH.

NOTE: Chart not to scale.



DEPARTURE ROUTE DESCRIPTION

TAKEOFF RUNWAY 3: Climbing left turn heading 250° to intercept and proceed via PXR R-321 to JONHH INT. Thence. . . .

TAKEOFF RUNWAY 21: Climbing right turn heading 285° to intercept and proceed via PXR R-321 to JONHH INT. Thence. . . .

. . . .via RADAR vectors to (assigned route).

LOST COMMUNICATIONS: If not in contact with departure control at JONHH INT, turn left direct to PXR VORTAC, thence via assigned transition. Expect filed altitude 3 minutes after departure.

ALBUQUERQUE TRANSITION (SCOT7.ABQ): From over JONHH INT on RADAR vectors and PXR R-054 and SJN R-236 to SJN VORTAC, then on SJN R-059 and ABQ R-240 to ABQ VORTAC.

BLYTHE TRANSITION (SCOT7.BLH): From over JONHH INT on RADAR vectors and BXK R-077 to BXK VORTAC, then on BXK R-262 and BLH R-080 to BLH VORTAC.

BUCKEYE TRANSITION (SCOT7.BXK): From over JONHH INT on RADAR vectors and BXK R-077 to BXK VORTAC.

DINGO TRANSITION (SCOT7.DINGO): From over JONHH INT on RADAR vectors and TFD R-343 to TFD VORTAC, then on TFD R-133 to BASER INT, and then on TUS R-295 to DINGO INT.

GILA BEND TRANSITION (SCOT7.GBN): From over JONHH INT on RADAR vectors and PXR R-206 to MOBIE INT, then on GBN R-055 to GBN VORTAC.

OLIIN TRANSITION (SCOT7.OLIIN): From over JONHH INT on RADAR vectors and TFD R-343 to TFD VORTAC, then on TFD R-107 to PUSCH INT, and then on TFD R-107 to OLIIN INT.

TUCSON TRANSITION (SCOT7.TUS): From over JONHH INT on RADAR vectors and TFD R-343 to TFD VORTAC, then on TFD R-121 and TUS R-301 to TUS VORTAC.

SW-4, 28 NOV 2024 to 26 DEC 2024

SW-4, 28 NOV 2024 to 26 DEC 2024