

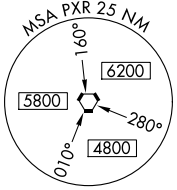
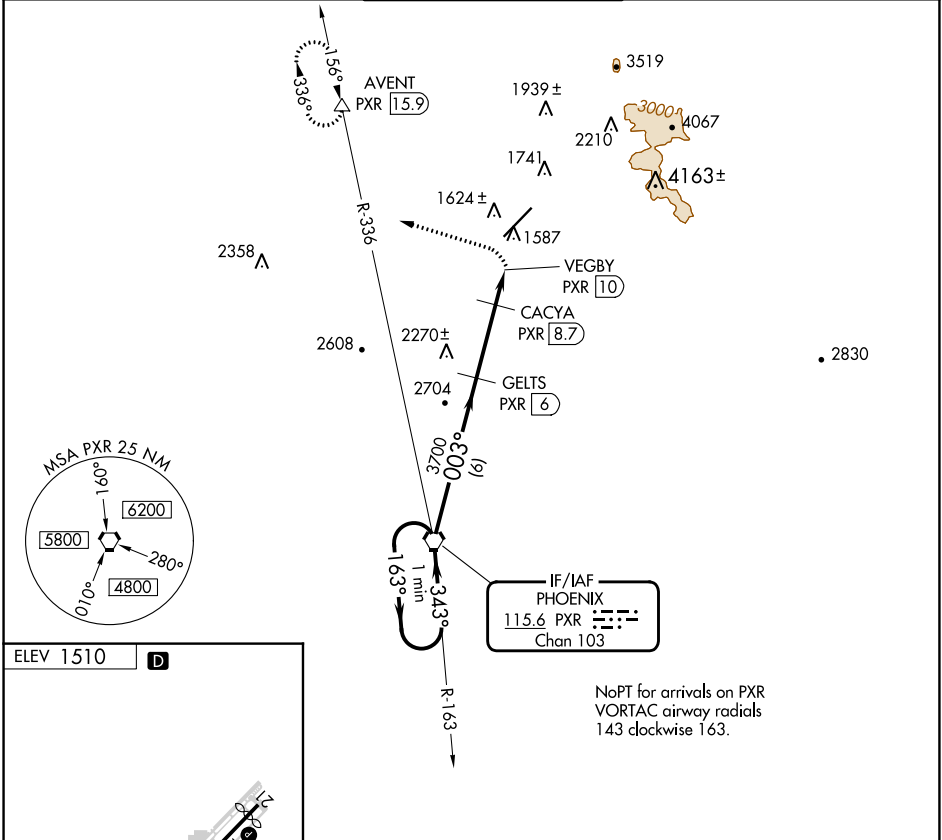
VORTAC PXR 115.6 Chan 103	APP CRS 003°	Rwy Idg TDZE Apt Elev 1510	N/A N/A
---	------------------------	--	--------------------------

VOR/DME-A
SCOTTSDALE (SDL)

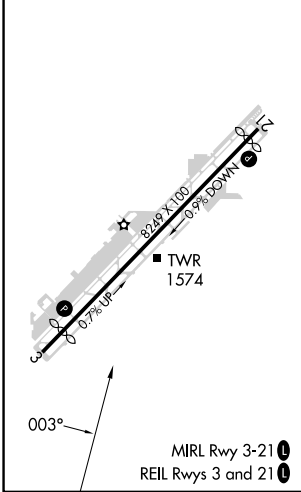
⚠ When local altimeter setting not received, use Phoenix Sky Harbor altimeter setting and increase all MDA 100 feet and increase visibility Cat C ¼ SM.

MISSED APPROACH: Climbing left turn to 7000 on heading 280° and on PXR VORTAC R-336 to AVENT/PXR 15.9 DME and hold, continue climb-in-hold to 7000.

ATIS★ 118.6	PHOENIX APP CON 120.7 239.0	SCOTTSDALE TOWER★ 119.9 (CTAF) 0	GND CON 121.6	CLNC DEL 124.8
-----------------------	---------------------------------------	--	-------------------------	--------------------------



ELEV 1510 **D**



NoPT for arrivals on PXR VORTAC airway radials 143 clockwise 163.

One Minute Holding Pattern	PXR VORTAC		7000	PXR R-336	AVENT
	4200 ← 163° → 343° → 003° → 3700 → 2700 →		hdg 280°		△
	6 NM 2.7 NM 1.3 NM		CACYA PXR 8.7	VEGBY PXR 10	
CATEGORY	A	B	C	D	
CIRCLING	2380-1½	870 (900-1½)	2460-2¾ 950 (1000-2¾)	3300-3 1790 (1800-3)	

SW-4, 28 NOV 2024 to 26 DEC 2024

SW-4, 28 NOV 2024 to 26 DEC 2024