

WAAS CH <b>49222</b> <b>W08A</b>	APP CRS <b>084°</b>	Rwy Idg TDZE Apt Elev	<b>6002</b> <b>698</b> <b>698</b>
--	------------------------	-----------------------------	---

# RNAV (GPS) RWY 8

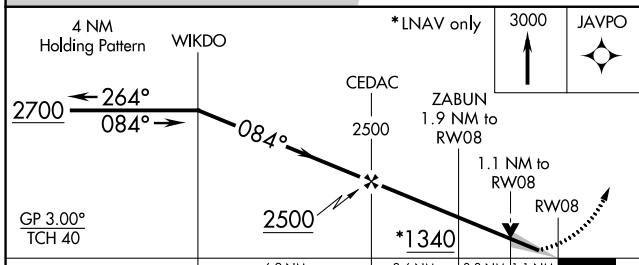
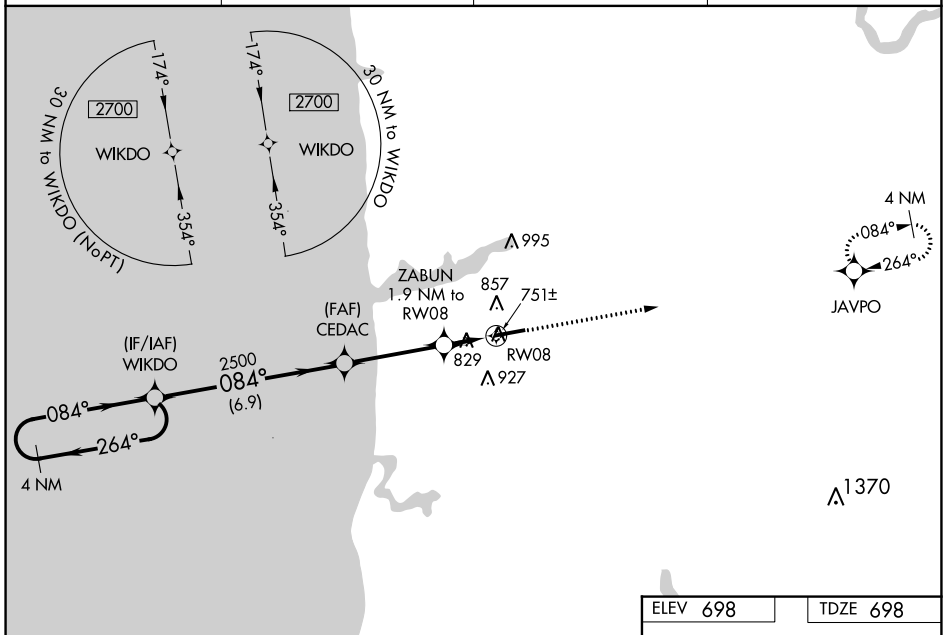
WEST MICHIGAN RGNL (BIV)

RNP APCH - GPS.

▼ For uncompensated Baro-VNAV systems, LNAV/VNAV NA below -16°C or above 54°C.  
 ▲ When local altimeter setting not received, use Muskegon altimeter setting: increase LPV DA to 1018 feet, increase LNAV/VNAV DA to 1160 feet, and all visibilities ¼ SM, increase all MDAs 80 feet, and visibility LNAV Cat C/D ¼ SM and Circling Cat C/D ¼ SM. Baro-VNAV and VDP NA when using Muskegon altimeter setting.

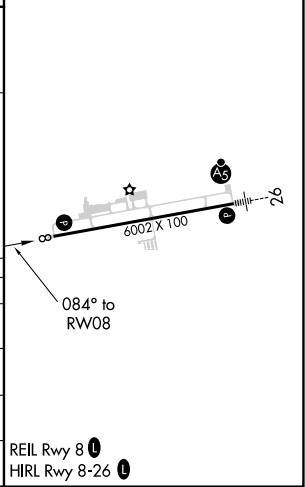
MISSED APPROACH:  
 Climb to 3000 direct JAVPO and hold.

ASOS <b>119.025</b>	GREAT LAKES APP CON* <b>133.825 290.35</b>	CLNC DEL <b>123.95</b>	UNICOM <b>123.05 (CTAF) ①</b>
------------------------	---	---------------------------	----------------------------------



ELEV 698	TDZE 698
----------	----------

CATEGORY	A	B	C	D
LPV DA	948-7/8		250 (300-7/8)	
LNAV/VNAV DA	1080-1 1/8		382 (400-1 1/8)	
LNAV MDA	1080-1	382 (400-1)	1080-1 1/8	382 (400-1 1/8)
CIRCLING	1200-1 502 (600-1)	1240-1 542 (600-1)	1240-1 1/2 542 (600-1 1/2)	1320-2 622 (700-2)



EC-1, 28 NOV 2024 to 26 DEC 2024

EC-1, 28 NOV 2024 to 26 DEC 2024