

WAAS CH 56604 W18A	APP CRS 188°	Rwy Idg TDZE Apt Elev	4999 226 226
--	------------------------	-----------------------------	---

RNAV (GPS) RWY 18

MONROE COUNTY (M40)

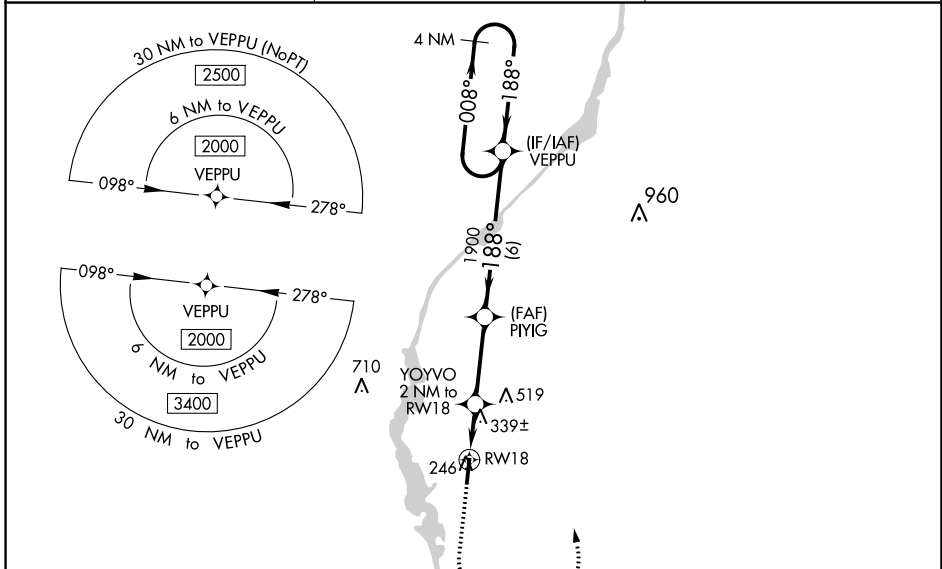
RNP APCH.

▼

For uncompensated Baro-VNAV systems, LNAV/VNAV NA below -15°C or above 54°C.

MISSED APPROACH: Climb to 800 then climbing left turn to 2000 direct VEPPU and hold.

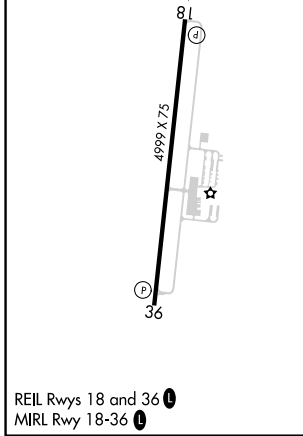
AWOS-3P 118.475	COLUMBUS APP CON ★ 126.075 239.25	UNICOM 122.8 (CTAF) 0
---------------------------	---	---------------------------------



SC-4, 28 NOV 2024 to 26 DEC 2024

SC-4, 28 NOV 2024 to 26 DEC 2024

ELEV 226	TDZE 226
----------	----------



800	2000	VEPPU	VGSi and RNAV glidepath not coincident (VGSi Angle 3.00/TCH 40).	
*LNAV only.		YOYVO 2 NM to RW18	PIYIG 1900	VEPPU 4 NM Holding Pattern
*1.1 NM to RW18		*900		GP 3.00° TCH 40
1.1 NM		0.9	3.1 NM	6 NM
CATEGORY	A	B	C	D
LPV DA		476-3/4	250 (300-3/4)	
LNAV/VNAV DA		504-7/8	278 (300-7/8)	
LNAV MDA		600-1	374 (400-1)	
C CIRCLING	660-1 434 (500-1)	680-1 454 (500-1)	820-1 1/2 594 (600-1 1/2)	860-2 634 (700-2)