

WAAS CH 61008 W04A	APP CRS 038°	Rwy Idg 6032 TDZE 511 Apt Elev 529
--	------------------------	---

RNAV (GPS) RWY 4

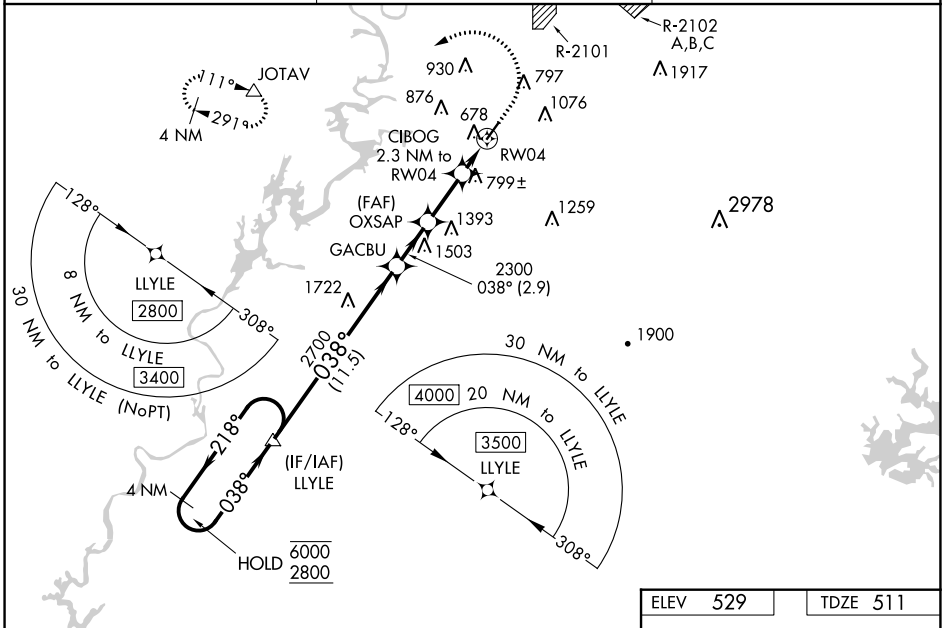
TALLADEGA MUNI (ASN)

RNP APCH - GPS.

⚠ For uncompensated Baro-VNAV systems, LNAV/VNAV NA below -16°C or above 54°C.

MISSED APPROACH: Climb to 1300 then climbing left turn to 3700 direct JOTAV and hold, continue climb-in-hold to 3700.

AWOS-3PT 118.425	BIRMINGHAM APP CON 132.15 285.45	UNICOM 122.8 (CTAF) 0
----------------------------	--	---------------------------------



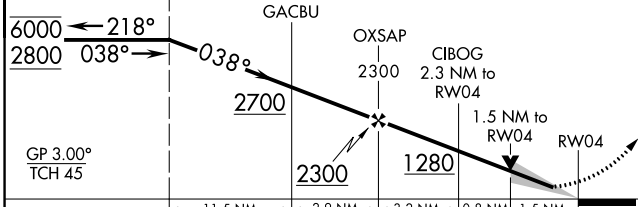
SE-4, 28 NOV 2024 to 26 DEC 2024

SE-4, 28 NOV 2024 to 26 DEC 2024

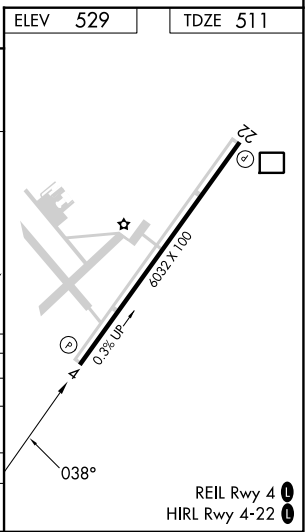
VGSI and RNAV glidepath not coincident (VGSI Angle 3.00/TCH 65).

4 NM Holding Pattern LLYLE

1300 3700 JOTAV



CATEGORY	A	B	C	D
LPV DA		711-3/4	200 (200-3/4)	
LNAV/VNAV DA		884-1	373 (400-1)	
LNAV MDA	1060-1	549 (600-1)	1060-1 5/8	549 (600-1 5/8)
C CIRCLING	1140-1 611 (700-1)	1180-1 651 (700-1)	1380-2 1/2 851 (900-2 1/2)	1500-3 971 (1000-3)



REIL Rwy 4 **0**
HIRL Rwy 4-22 **0**