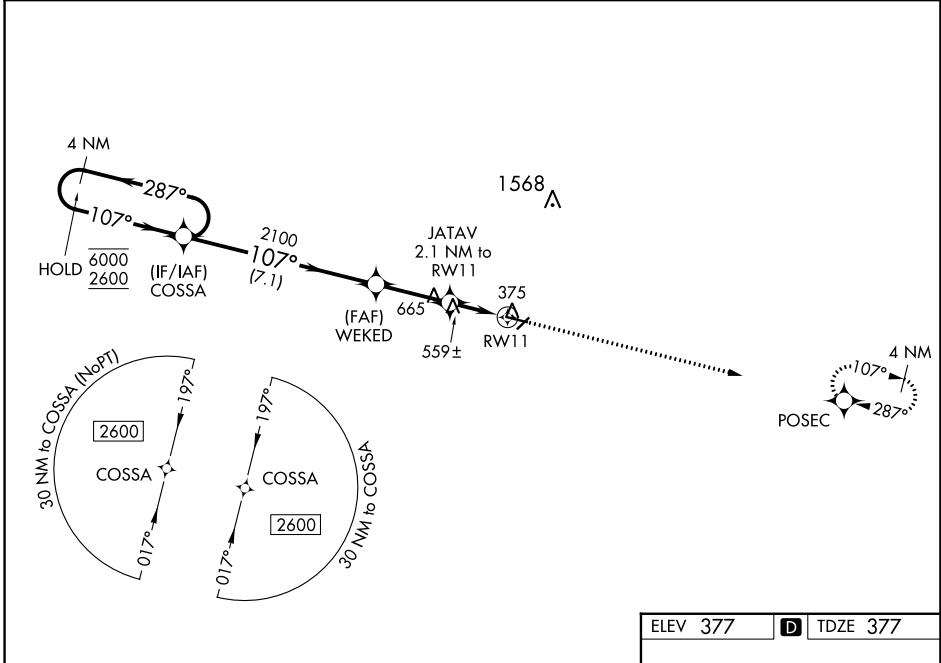


WAAS CH <b>82521</b> <b>W11A</b>	APP CRS <b>107°</b>	Rwy ldg TDZE <b>377</b> Apt Elev <b>377</b>
--	------------------------	---

# RNAV (GPS) RWY 11

COCHRAN (48A)

RNP APCH - GPS.		MISSED APPROACH: Climb to 2600 direct POSEC and hold.
⚠ Rwy 11 helicopter visibility reduction below 1 SM NA. For uncompensated Baro-VNAV systems, LNAV/VNAV NA below -15°C or above 54°C. Straight-in Rwy 11 NA at night, Circling Rwy 5, 11 and 23 NA at night.		
AWOS-3PT <b>120.975</b>	ATLANTA APP CON * <b>124.2 279.6</b>	UNICOM <b>122.8 (CTAF) 0</b>



SE-4, 28 NOV 2024 to 26 DEC 2024

SE-4, 28 NOV 2024 to 26 DEC 2024

4 NM Holding Pattern		VGSI and RNAV glidepath not coincident (VGSI Angle 3.25/TCH 45).		2600	POSEC
GP 3.25° TCH 54		WEKED	JATAV	RW11	
6000 ← 287° 2600 → 107°		2100	2.1 NM to RW11		
		2100	1160		
		7.1 NM	2.7 NM	2.1 NM	
CATEGORY	A	B	C	D	
LPV DA		678-1	301 (400-1)		
LNAV/VNAV DA		690-1	313 (400-1)		
LNAV MDA	820-1	443 (500-1)	820-1 <sup>3</sup> / <sub>8</sub>	443 (500-1 <sup>3</sup> / <sub>8</sub> )	
<b>C</b> CIRCLING	820-1 443 (500-1)	860-1 483 (500-1)	980-1 <sup>3</sup> / <sub>4</sub> 603 (700-1 <sup>3</sup> / <sub>4</sub> )	980-2 603 (700-2)	

