

VOR/DME BSV <b>114.05</b> Chan <b>87</b> (Y)	APP CRS <b>115°</b>	Rwy Idg <b>5189</b> TDZE <b>1113</b> Apt Elev <b>1136</b>
--	------------------------	---

# VOR RWY 10

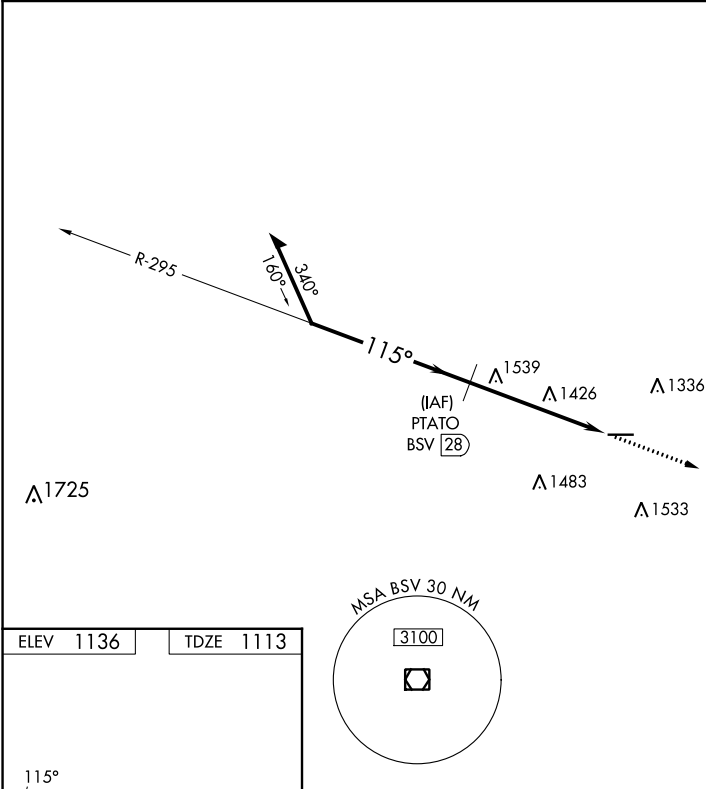
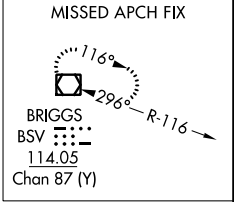
WAYNE COUNTY (BJJ)

DME required.

**▼** When local altimeter setting not received, use Akron-Canton Rgnl altimeter setting and increase all MDA 60 feet; increase S-10 Cat C/D and Circling Cat C/D visibility ¼ SM. Rwy 10 helicopter visibility reduction below ¾ SM NA.

**⚠** MISSED APPROACH: Climb to 2800 direct BSV VOR/DME and hold.

ASOS <b>118.075</b>	CLEVELAND APP CON ★ <b>125.5 371.875</b>	CLNC DEL <b>121.75</b>	UNICOM <b>122.975</b> (CTAF) <b>1</b>
------------------------	---	---------------------------	--

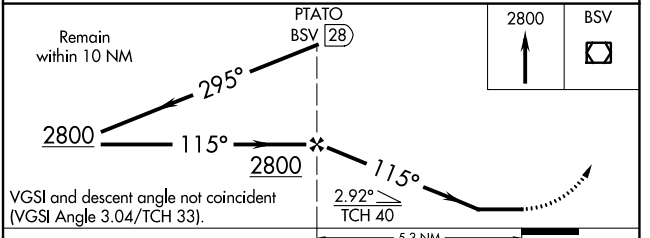


ELEV 1136	TDZE 1113
-----------	-----------

REIL Rwys 10 and 28 **1**  
HIRL Rwy 10-28 **1**

FAF to MAP 5.3 NM

Knots	60	90	120	150	180
Min:Sec	5:18	3:32	2:39	2:07	1:46



CATEGORY	A	B	C	D
S-10	1840-1 727 (800-1)	1840-1 ¼ 727 (800-1 ¼)	1840-2 727 (800-2)	1840-2 ¼ 727 (800-2 ¼)
<b>C</b> CIRCLING	1840-1 704 (800-1)	1840-1 ¼ 704 (800-1 ¼)	1840-2 704 (800-2)	1840-2 ¼ 704 (800-2 ¼)

EC-2, 28 NOV 2024 to 26 DEC 2024

EC-2, 28 NOV 2024 to 26 DEC 2024