

VORTAC HPW <b>114.35</b> Chan 90 (Y)	APP CRS <b>252°</b>	Rwy Idg TDZE Apt Elev	<b>5002</b> <b>191</b> <b>193</b>
--	------------------------	-----------------------------	---

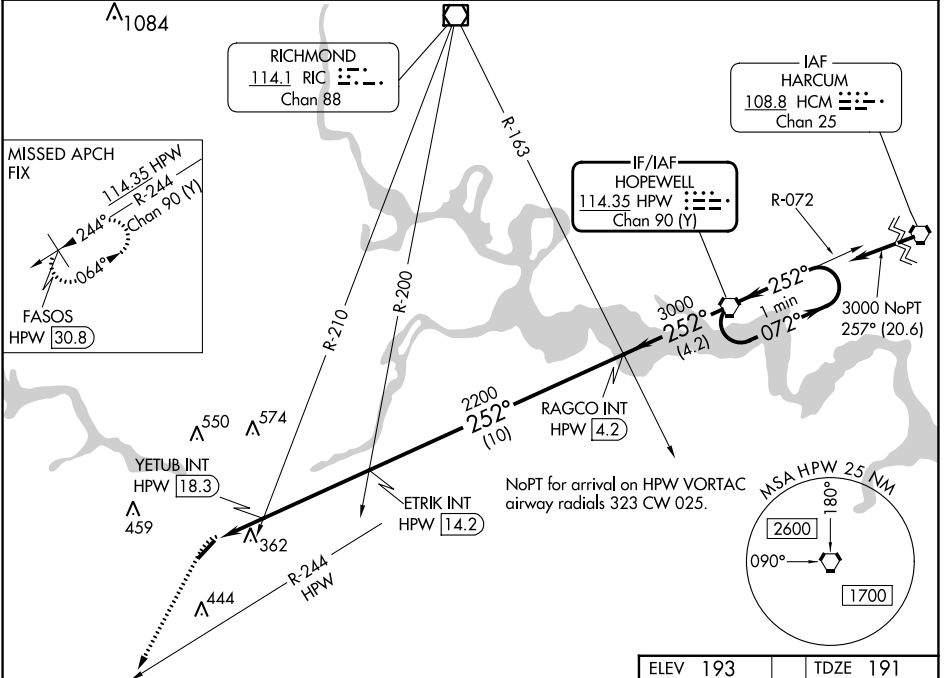
# VOR RWY 23

TRI CITIES EXEC/DINWIDDIE COUNTY (PTB)

**⚠** When local altimeter setting not received, use Richmond Exec/Chesterfield County altimeter setting and increase all MDA 40 feet; increase S-23 Cat C and Circling Cat C visibility 1/8 mile and YETUB fix minimums S-23 Cat C visibility 1/8 mile and Circling Cat C visibility 1/4 mile. DME required.

MISSED APPROACH: Climb to 2000 on heading 214° and HPW R-244 to FASOS/HPW 30.8 DME and hold.

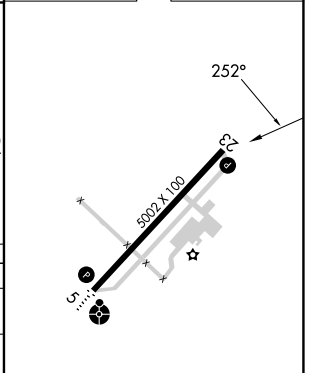
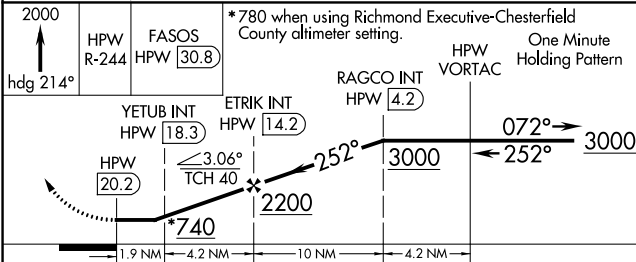
AWOS-3 <b>133.325</b>	POTOMAC APP CON <b>126.75 307.2</b>	GCO <b>135.075</b>	UNICOM <b>122.7 (CTAF)</b> <b>0</b>
--------------------------	--	-----------------------	--



NE-3, 28 NOV 2024 to 26 DEC 2024

NE-3, 28 NOV 2024 to 26 DEC 2024

ELEV 193	TDZE 191
----------	----------



CATEGORY	A	B	C	D
S-23	740-1	549 (600-1)	740-1 1/8 549 (600-1 1/8)	NA
<b>C</b> CIRCLING	740-1	547 (600-1)	760-1 1/8 567 (600-1 1/8)	NA
YETUB FIX MINIMUMS (DUAL VOR RECEIVERS OR DME REQUIRED)				
S-23	620-1	429 (500-1)	620-1 1/4 429 (500-1 1/4)	NA
<b>C</b> CIRCLING	680-1	487 (500-1)	760-1 1/2 567 (600-1 1/2)	NA

MIRL Rwy 5-23 <b>0</b>	REIL Rwy 23 <b>0</b>
FAF to MAP 6.1 NM	
Knots	60 90 120 150 180
Min:Sec	6:06 4:04 3:03 2:26 2:02

# VOR RWY 23