

VORTAC FBC	APP CRS	Rwy Idg	4126
108.2	233°	TDZE	850
Chan 19		Apt Elev	851

VOR RWY 23

BLUFFTON (5G7)

▽ Use Findlay altimeter setting; when not received, use Lima altimeter setting and increase all MDA 20 feet, increase S-23 Cat C 1/8 SM and Circling Cat C/D visibility 1/4 SM.

⚠ NA

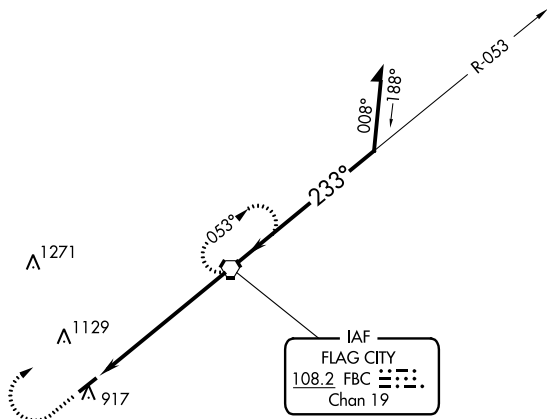
MISSED APPROACH: Climb to 2500 then right turn direct FBC VORTAC and hold.

FDY ASOS
132.85

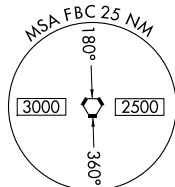
TOLEDO APP CON
120.8 317.55

UNICOM
122.8 (CTAF) 0

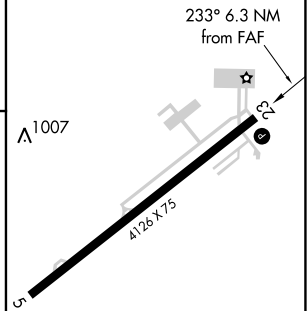
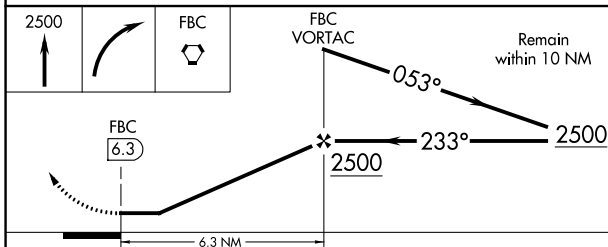
1817 **△**



IAF
FLAG CITY
108.2 FBC
Chan 19



ELEV 851 TDZE 850



CATEGORY	A	B	C	D
S-23	1360-1 510 (600-1)	1520-1 669 (700-1)	1360-1 1/8 510 (600-1 3/8)	1360-1 1/2 510 (600-1 1/2)
C CIRCLING	1360-1 509 (600-1)	1520-1 669 (700-1)	1520-1 3/4 669 (700-1 3/4)	1520-2 669 (700-2)

REIL Rwy 5 and 23 **0**
MIRL Rwy 5-23 **0**

FAF to MAP 6.3 NM

Knots	60	90	120	150	180
Min:Sec	6:18	4:12	3:09	2:31	2:06