

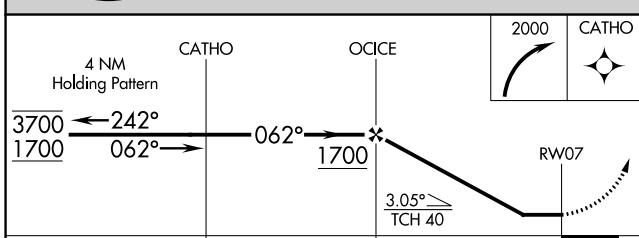
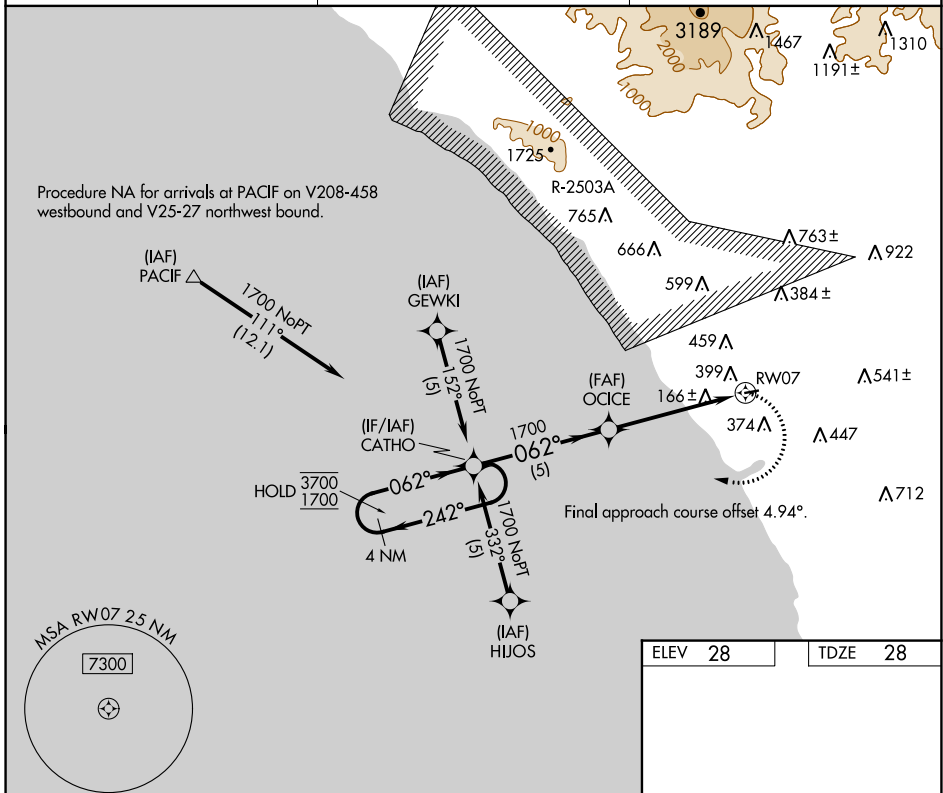
APP CRS	Rwy ldg	<b>2712</b>
<b>062°</b>	TDZE	<b>28</b>
	Apt Elev	<b>28</b>

# RNAV (GPS) RWY 7

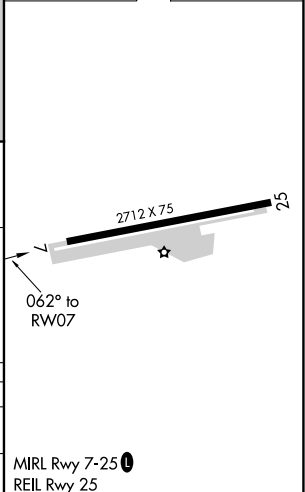
BOB MAXWELL MEML AIRFIELD (OKB)

RNP APCH-GPS.	MISSED APPROACH: Climbing right turn to 2000 direct CATHO and hold.
<p>▼ Rwy 7 helicopter visibility reduction below 1 SM NA.</p> <p>▲ NA Rwy 7 Straight-in and Circling minimums NA at night.</p>	

ASOS <b>127.8</b>	SOCAL APP CON <b>127.3 323.0</b>	UNICOM <b>122.725 (CTAF)</b>
----------------------	-------------------------------------	---------------------------------



ELEV 28	TDZE 28
---------	---------



CATEGORY	A	B	C	D
LNVA MDA	660-1	632 (700-1)	NA	
CIRCLING	720-1 692 (700-1)	840-1¼ 812 (900-1¼)	NA	

SW-3, 28 NOV 2024 to 26 DEC 2024

SW-3, 28 NOV 2024 to 26 DEC 2024